

À des fins de recherche uniquement

# Anticorps Polyclonal de lapin anti-E-cadherin



Numéro de catalogue: 20648-1-AP

6 Publications

## Informations de base

Numéro de catalogue:  
20648-1-AP

Taille:  
150ul , Concentration: 200 µg/ml by  
Bradford method using BSA as the  
standard;

Hôte:  
Lapin

Isotype:  
IgG

Numéro d'acquisition GenBank:  
NM\_004360

Identification du gène (NCBI):  
999  
Nom complet:  
cadherin 1, type 1, E-cadherin  
(epithelial)

MW calculé

97 kDa

MW observés:  
100-125 kDa

Méthode de purification:  
Purification par affinité contre  
l'antigène

Dilutions recommandées:  
WB 1:500-1:1000  
IHC 1:50-1:200  
IF 1:10-1:100

## Applications

Applications testées:  
FC, IF, IHC, WB, ELISA

Demandes citées:  
IF, WB

Spécificité de l'espèce:  
Humain, rat, souris

Espèces citées:  
Humain, souris

Contrôles positifs:

WB : cellules PC-3,

IHC : tissu de cancer du côlon humain, tissu de cancer  
du foie humain

IF : cellules HepG2,

**Remarque-IHC: il est suggéré de démasquer  
l'antigène avec un tampon de TE buffer pH  
9,0; (\*) À défaut, 'le démasquage de  
l'antigène peut être 'effectué avec un  
tampon citrate pH 6,0.**

## Informations générales

E-cadherin (epithelial cadherin), also known as CDH1 (cadherin 1) or CAM 120/80, is a classical member of the cadherin superfamily which also include N-, P-, R-, and B-cadherins. It has been regarded as a marker for spermatogonial stem cells in mice (PMID:23509752). E-cadherin is expressed on the cell surface in most epithelial tissues. The extracellular region of E-cadherin establishes calcium-dependent homophilic trans binding, providing specific interaction with adjacent cells, while the cytoplasmic domain is connected to the actin cytoskeleton through the interaction with p120-,  $\alpha$ -,  $\beta$ -, and  $\gamma$ -catenin (plakoglobin). E-cadherin is important in the maintenance of the epithelial integrity, and is involved in mechanisms regulating proliferation, differentiation, and survival of epithelial cell. E-cadherin may also play a role in tumorigenesis. It is considered to be an invasion suppressor protein and its loss is an indicator of high tumor aggressiveness. This antibody is specific to CDH1.

## Publications notables

Autrice	Pubmed ID	Journal	Application
Wenhua Huang	36293081	Int J Mol Sci	WB
Tianming Liu	26459119	Mol Med Rep	WB
Thankam S Nair	34371293	Tissue Cell	IF

## Stockage

Stockage:

Stocker à -20°C. Stable pendant un an après l'expédition.

Tampon de stockage:

PBS avec azoture de sodium à 0,02 % et glycérol à 50 % pH 7,3

L'aliquotage n'est pas nécessaire pour le stockage à -20C

\*\*\* Les 20ul contiennent 0,1% de BSA.

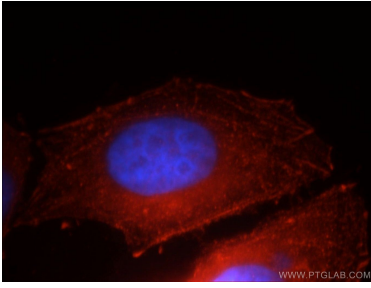
For technical support and original validation data for this product please contact:

T: 1 (888) 4PTGLAB (1-888-478-4522) (toll free  
in USA), or 1(312) 455-8498 (outside USA)

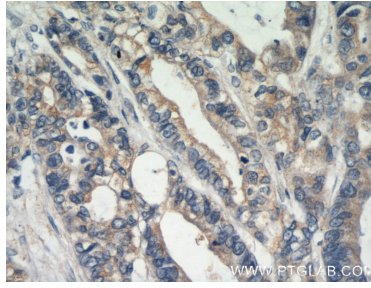
E: proteintech@ptglab.com  
W: ptglab.com

This product is exclusively available under Proteintech Group brand and is not available to purchase from any other manufacturer.

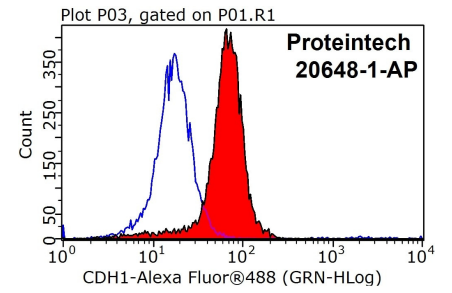
## Données de validation sélectionnées



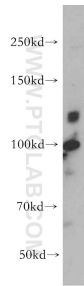
Immunofluorescent analysis of HepG2 cells, using CDH1 antibody 20648-1-AP at 1:25 dilution and Rhodamine-labeled goat anti-rabbit IgG (red). Blue pseudocolor = DAPI (fluorescent DNA dye).



Immunohistochemical analysis of paraffin-embedded human colon cancer using 20648-1-AP (E-cadherin antibody) at dilution of 1:50 (under 40x lens).



1X10<sup>6</sup> HepG2 cells were stained with 0.2ug E-cadherin antibody (20648-1-AP, red) and control antibody (blue). Fixed with 4% PFA blocked with 3% BSA (30 min). Alexa Fluor 488-conjugated AffiniPure Goat Anti-Rabbit IgG(H+L) with dilution 1:200.



PC-3 cells were subjected to SDS PAGE followed by western blot with 20648-1-AP (E-cadherin antibody) at dilution of 1:500 incubated at room temperature for 1.5 hours.