

À des fins de recherche uniquement

# Anticorps Polyclonal de lapin anti-L1CAM



Numéro de catalogue: 20659-1-AP

3 Publications

## Informations de base

|  |   |  |
|--|---|--|
| <b>Numéro de catalogue:</b><br>20659-1-AP  | <b>Numéro d'acquisition GenBank:</b><br>NM_000425   | <b>Méthode de purification:</b><br>Purification par affinité contre l'antigène |
| <b>Taille:</b><br>150ul, Concentration: 3000 µg/ml by 3897 Nanodrop and 1133 µg/ml by Bradford method using BSA as the standard; | <b>Identification du gène (NCBI):</b><br><b>Nom complet:</b><br>L1 cell adhesion molecule | <b>Dilutions recommandées:</b><br>WB 1:500-1:2000                              |
| <b>Hôte:</b><br>Lapin  | <b>MW calculé:</b><br>140 kDa   |  |
| <b>Isotype:</b><br>IgG   | <b>MW observés:</b><br>200-220 kDa, 80 kDa  |  |

## Applications

|  |  |
|--|--|
| <b>Applications testées:</b><br>WB, ELISA              | <b>Contrôles positifs:</b><br>WB : tissu cérébral de souris, tissu cérébral de rat |
| <b>Demandes citées:</b><br>IHC, WB                     |  |
| <b>Spécificité de l'espèce:</b><br>Humain, rat, souris |  |
| <b>Espèces citées:</b><br>Humain                       |  |

## Informations générales

L1CAM, also known as NCAM-L1 or CD171, is a cell adhesion molecule of the immunoglobulin superfamily. It is a 200-220 kDa transmembrane glycoprotein composed of six Ig-like domains and five fibronectin type III repeats followed by a transmembrane region and a highly conserved cytoplasmic tail (PMID: 3412448; 22796939). L1CAM is primarily expressed in the nervous system and is involved in neuron-neuron adhesion, neurite fasciculation, outgrowth of neurites, cerebellar granule cell migration, neurite outgrowth on Schwann cells and interactions among epithelial cells of intestinal crypts (PMID: 3412448; 10767310). L1CAM is overexpressed in many human cancers and is often associated with bad prognosis (PMID: 27267927; 26111503). It has been reported that L1CAM can be proteolytically cleaved into a soluble fragment of 140 kDa and an intracellular fragment of 80-85 kDa (PMID: 30842511; 34380733). This antibody raised against 1206-1221aa of human L1CAM detects 200-220 kDa full-length L1CAM and 80-kDa cleaved fragment of L1CAM.

## Publications notables

| Autrice          | Pubmed ID | Journal             | Application |
|------------------|-----------|---------------------|-------------|
| Sunitha Kodidela | 32481515  | Diagnostics (Basel) | WB          |
| Kuo Tong         | 31997427  | Histopathology      | IHC         |
| Jiahao Li        | 36943894  | Anal Chem           |             |

## Stockage

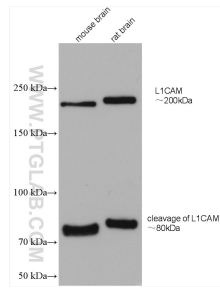
**Stockage:**  
Stocker à -20°C. Stable pendant un an après l'expédition.  
**Tampon de stockage:**  
PBS avec azoture de sodium à 0,02 % et glycérol à 50 % pH 7,3  
L'aliquotage n'est pas nécessaire pour le stockage à -20C

\*\*\* Les 20ul contiennent 0,1% de BSA.

For technical support and original validation data for this product please contact:  
T: 1 (888) 4PTGLAB (1-888-478-4522) (toll free in USA), or 1(312) 455-8498 (outside USA)  
E: proteintech@ptglab.com  
W: ptglab.com

This product is exclusively available under Proteintech Group brand and is not available to purchase from any other manufacturer.

## Données de validation sélectionnées



Various lysates were subjected to SDS PAGE followed by western blot with 20659-1-AP (L1CAM antibody) at dilution of 1:1000 incubated at room temperature for 1.5 hours.