

À des fins de recherche uniquement

# Anticorps Polyclonal de lapin anti-CaMKII alpha-Specific



Numéro de catalogue: 20666-1-AP

Phare

10 Publications

## Informations de base

Numéro de catalogue:  
20666-1-AP

Taille:  
150ul, Concentration: 700 µg/ml by Nanodrop and 320 µg/ml by Bradford method using BSA as the standard;

Hôte:  
Lapin

Isotype:  
IgG

Numéro d'acquisition GenBank:  
NM\_015981

Identification du gène (NCBI):  
815

Nom complet:  
calcium/calmodulin-dependent protein kinase II alpha

MW calculé:  
55 kDa

MW observés:  
50 kDa

Méthode de purification:  
Purification par affinité contre l'antigène

Dilutions recommandées:  
WB 1:500-1:2000  
IP 0.5-4.0 ug for IP and 1:500-1:2000 for WB  
IHC 1:20-1:200  
IF 1:50-1:500

## Applications

Applications testées:  
IF, IHC, IP, WB, ELISA

Demandes citées:  
ColP, WB

Spécificité de l'espèce:  
Humain

Espèces citées:  
Humain

Contrôles positifs:

WB : cellules HEK-293,

IP : cellules HEK-293,

IHC : tissu cérébral humain,

IF : tissu cérébral de souris, cellules SH-SY5Y

**Remarque-IHC: il est suggéré de démasquer l'antigène avec un tampon de TE buffer pH 9,0; (\*) À défaut, le démasquage de l'antigène peut être effectué avec un tampon citrate pH 6,0.**

## Informations générales

CaMKII alpha, also named as CAMKA and KIAA0968, belongs to the protein kinase superfamily, CAMK Ser/Thr protein kinase family and CaMK subfamily. CaM-kinase II (CAMK2) is a prominent kinase in the central nervous system that may function in long-term potentiation and neurotransmitter release. It is a member of the NMDAR signaling complex in excitatory synapses it may regulate NMDAR-dependent potentiation of the AMPAR and synaptic plasticity. This antibody is specific to CAMK2A.

## Publications notables

Autrice	Pubmed ID	Journal	Application
You Wang	34642320	Cell Death Dis	WB, ColP
Huanliang Liu	31829301	Sci Total Environ	WB
Wenfeng Liu	31242498	Gerontology	WB

## Stockage

Stockage:

Stocker à -20°C. Stable pendant un an après l'expédition.

Tampon de stockage:

PBS avec azoture de sodium à 0,02 % et glycérol à 50 % pH 7,3

L'aliquotage n'est pas nécessaire pour le stockage à -20C

**\*\*\* Les 20ul contiennent 0,1% de BSA.**

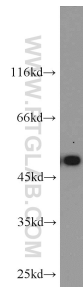
For technical support and original validation data for this product please contact:

T: 1 (888) 4PTGLAB (1-888-478-4522) (toll free in USA), or 1(312) 455-8498 (outside USA)

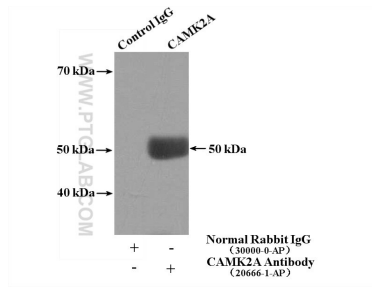
E: proteintech@ptglab.com  
W: ptglab.com

This product is exclusively available under Proteintech Group brand and is not available to purchase from any other manufacturer.

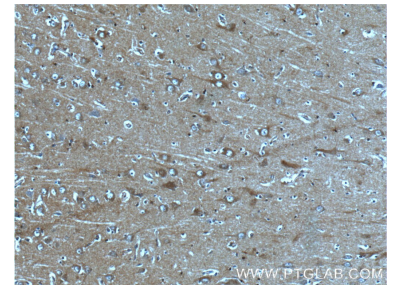
## Données de validation sélectionnées



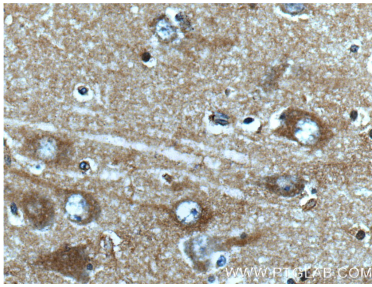
HEK-293 cells were subjected to SDS PAGE followed by western blot with 20666-1-AP (CaMKII alpha-Specific antibody) at dilution of 1:1000 incubated at room temperature for 1.5 hours.



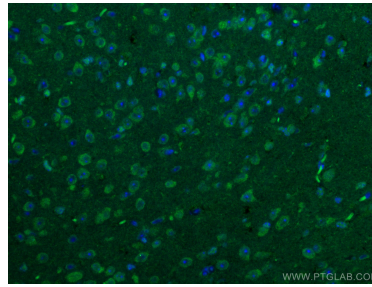
IP Result of anti-CaMKII alpha-Specific (IP:20666-1-AP, 4ug; Detection:20666-1-AP 1:1000) with HEK-293 cells lysate 1480ug.



Immunohistochemical analysis of paraffin-embedded human brain tissue slide using 20666-1-AP (CaMKII alpha-Specific antibody) at dilution of 1:50 (under 10x lens).



Immunohistochemical analysis of paraffin-embedded human brain tissue slide using 20666-1-AP (CaMKII alpha-Specific antibody) at dilution of 1:50 (under 40x lens).



Immunofluorescent analysis of (4% PFA) fixed mouse brain tissue using 20666-1-AP (CaMKII alpha-Specific antibody), at dilution of 1:100 and CoraLite® 488-Conjugated AffiniPure Goat Anti-Rabbit IgG(H+L).