

À des fins de recherche uniquement

# Anticorps Polyclonal de lapin anti-CaMKII delta-Specific



Numéro de catalogue: 20667-1-AP

Phare

7 Publications

## Informations de base

Numéro de catalogue:

20667-1-AP

Taille:

150ul, Concentration: 350 µg/ml by Nanodrop and 193 µg/ml by Bradford method using BSA as the standard;

Hôte:

Lapin

Isotype:

IgG

Numéro d'acquisition GenBank:

NM\_001221

Identification du gène (NCBI):

817

Nom complet:

calcium/calmodulin-dependent protein kinase II delta

MW calculé

59 kDa

MW observés:

55 kDa

Méthode de purification:

Purification par affinité contre l'antigène

Dilutions recommandées:

WB 1:500-1:2000

IP 0.5-4.0 ug par IP and 1:500-1:1000 for WB

IHC 1:50-1:500

## Applications

Applications testées:

IHC, IP, WB, ELISA

Demandes citées:

IF, IHC, WB

Spécificité de l'espèce:

Humain, rat, souris

Espèces citées:

Humain, rat, souris

Contrôles positifs:

WB : tissu cérébral de souris, tissu cardiaque de souris, tissu cérébral de rat, tissu de muscle squelettique de souris, tissu de muscle squelettique humain

IP : tissu cérébral de rat,

IHC : tissu cérébral humain,

**Remarque-IHC: il est suggéré de démasquer l'antigène avec un tampon de TE buffer pH 9.0; (\*) À défaut, le démasquage de l'antigène peut être effectué avec un tampon citrate pH 6.0.**

## Informations générales

CaMKII delta, also named as CAMKD and CaMKII delta, belongs to the protein kinase superfamily, CAMK Ser/Thr protein kinase family and CaMK subfamily. CaM-kinase II (CAMK2) is a prominent kinase in the central nervous system that may function in long-term potentiation and neurotransmitter release, composed of four different chains: alpha, beta, gamma, and delta. The CAMK2 protein kinases contain a unique C-terminal subunit association domain responsible for oligomerization. The different chains assemble into homo- or heteromultimeric holoenzymes composed of 8 to 12 subunits. This antibody is specific to the C-term of delta chain, CaMKII delta. It can recognize most isoforms the gene encodes, from 50-72kd. It can recognize the isoform 2,3,4,9,11 of CAMK2D.

## Publications notables

Autrice	Pubmed ID	Journal	Application
Cui Ma	33230455	Mol Ther Nucleic Acids	WB
Peng Chen	33707969	J Pain Res	WB
Songxi Tang	35911132	Evid Based Complement Alternat Med	WB

## Stockage

Stockage:

Stocker à -20°C. Stable pendant un an après l'expédition.

Tampon de stockage:

PBS avec azoture de sodium à 0,02 % et glycérol à 50 % pH 7,3

L'aliquotage n'est pas nécessaire pour le stockage à -20C

\*\*\* Les 20ul contiennent 0,1% de BSA.

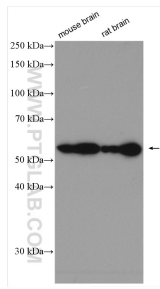
For technical support and original validation data for this product please contact:

T: 1 (888) 4PTGLAB (1-888-478-4522) (toll free in USA), or 1(312) 455-8498 (outside USA)

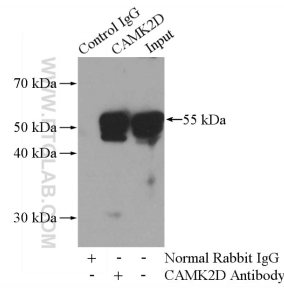
E: [proteintech@ptglab.com](mailto:proteintech@ptglab.com)  
W: [ptglab.com](http://ptglab.com)

This product is exclusively available under Proteintech Group brand and is not available to purchase from any other manufacturer.

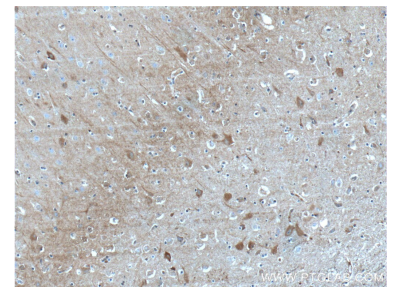
## Données de validation sélectionnées



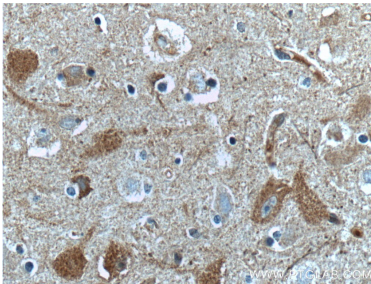
Various lysates were subjected to SDS PAGE followed by western blot with 20667-1-AP (CaMKII delta-Specific antibody) at dilution of 1:1000 incubated at room temperature for 1.5 hours.



IP Result of anti-CaMKII delta-Specific (IP:20667-1-AP, 4ug; Detection:20667-1-AP 1:600) with rat brain tissue lysate 4000ug.



Immunohistochemical analysis of paraffin-embedded human brain tissue slide using 20667-1-AP (CaMKII delta-Specific antibody at dilution of 1:200 (under 10x lens). Heat mediated antigen retrieval with Tris-EDTA buffer (pH 9.0).



Immunohistochemical analysis of paraffin-embedded human brain tissue slide using 20667-1-AP (CaMKII delta-Specific antibody at dilution of 1:200 (under 40x lens). Heat mediated antigen retrieval with Tris-EDTA buffer (pH 9.0).