

À des fins de recherche uniquement

Anticorps Polyclonal de lapin anti-FLNB



Numéro de catalogue: 20685-1-AP

2 Publications

Informations de base

Numéro de catalogue: 20685-1-AP	Numéro d'acquisition GenBank: NM_001457	Méthode de purification: Purification par affinité contre l'antigène
Taille: 150ul , Concentration: 450 µg/ml by Nanodrop and 213 µg/ml by Bradford method using BSA as the standard;	Identification du gène (NCBI): 2317	Dilutions recommandées: WB 1:500-1:1000 IHC 1:50-1:500 IF 1:10-1:100
Hôte: Lapin	Nom complet: filamin B, beta (actin binding protein 278)	
Isotype: IgG	MW calculé: 278 kDa	
	MW observés: 250-278 kDa	

Applications

Applications testées:

IF, IHC, WB, ELISA

Demandes citées:

IHC, WB

Spécificité de l'espèce:

Humain, rat, souris

Espèces citées:

Humain, souris

Contrôles positifs:

WB : cellules HeLa, cellules NIH/3T3, cellules U2OS

IHC : tissu de cancer du foie humain, tissu de côlon humain

IF : cellules HepG2,

Remarque-IHC: il est suggéré de démasquer l'antigène avec un tampon de TE buffer pH 9,0; (*) À défaut, le démasquage de l'antigène peut être effectué avec un tampon citrate pH 6,0.

Informations générales

FLNB, also named as FLN1L, FLN3, TABP, TAP and Fh1, belongs to the filamin family. FLNB connects cell membrane constituents to the actin cytoskeleton. It may promote orthogonal branching of actin filaments and links actin filaments to membrane glycoproteins. It is an anchors various transmembrane proteins to the actin cytoskeleton. Interaction with FLNA, FLNB may allow neuroblast migration from the ventricular zone into the cortical plate. Various interactions and localizations of isoforms affect myotube morphology and myogenesis. The antibody is specific to FLNB. It can recognize isoform 1,2,3,6,7 of FLNB. It has no cross reaction to FLNA and FLNC.

Publications notables

Autrice	Pubmed ID	Journal	Application
Wenwen Chen	32665550	Cell Death Dis	WB
Wenbin Huang	37003352	J Genet Genomics	IHC

Stockage

Stockage:

Stocker à -20°C. Stable pendant un an après l'expédition.

Tampon de stockage:

PBS avec azoture de sodium à 0,02 % et glycérol à 50 % pH 7,3

L'aliquotage n'est pas nécessaire pour le stockage à -20C

*** Les 20ul contiennent 0,1% de BSA.

For technical support and original validation data for this product please contact:

T: 1 (888) 4PTGLAB (1-888-478-4522) (toll free in USA), or 1(312) 455-8498 (outside USA)

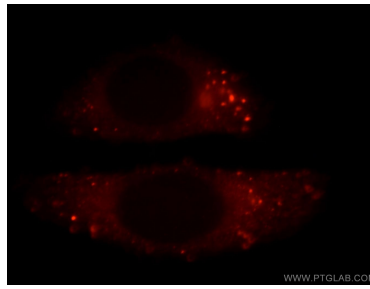
E: proteintech@ptglab.com
W: ptglab.com

This product is exclusively available under Proteintech Group brand and is not available to purchase from any other manufacturer.

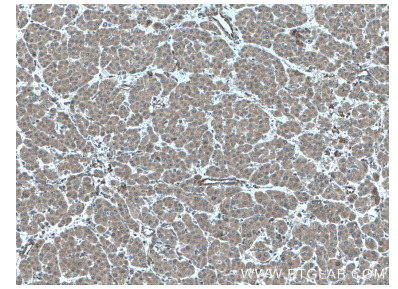
Données de validation sélectionnées



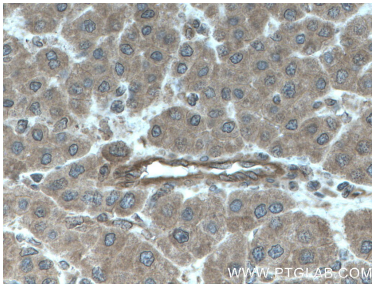
HeLa cells were subjected to SDS PAGE followed by western blot with 20685-1-AP (FLNB antibody) at dilution of 1:300 incubated at room temperature for 1.5 hours.



Immunofluorescent analysis of HepG2 cells, using FLNB antibody 20685-1-AP at 1:25 dilution and Rhodamine-labeled goat anti-rabbit IgG (red).



Immunohistochemical analysis of paraffin-embedded human liver cancer tissue slide using 20685-1-AP (FLNB antibody) at dilution of 1:200 (under 10x lens. Heat mediated antigen retrieval with Tris-EDTA buffer (pH 9.0).



Immunohistochemical analysis of paraffin-embedded human liver cancer tissue slide using 20685-1-AP (FLNB antibody) at dilution of 1:200 (under 40x lens. Heat mediated antigen retrieval with Tris-EDTA buffer (pH 9.0).