

À des fins de recherche uniquement

# Anticorps Polyclonal de lapin anti-RELN



Numéro de catalogue: 20689-1-AP

## Informations de base

Numéro de catalogue: 20689-1-AP	Numéro d'acquisition GenBank: NM_005045	Méthode de purification: Purification par affinité contre l'antigène
Taille: 150ul, Concentration: 700 µg/ml by Nanodrop and 300 µg/ml by Bradford method using BSA as the standard;	Identification du gène (NCBI): 5649	Dilutions recommandées: IHC 1:50-1:500 IF 1:50-1:500
Hôte: Lapin	Nom complet: reelin	
Isotype: IgG	MW calculé 388 kDa	

## Applications

Applications testées:  
IF, IHC, ELISA

Spécificité de l'espèce:  
Humain, souris

**Remarque-IHC: il est suggéré de démasquer l'antigène avec un tampon de TE buffer pH 9,0; (\*) À défaut, le démasquage de l'antigène peut être effectué avec un tampon citrate pH 6,0.**

Contrôles positifs:

IHC : tissu de cancer du foie humain, tissu hépatique humain

IF : tissu cérébral de souris,

## Informations générales

RELN belongs to the reelin family. It is an extracellular matrix serine protease that plays a role in layering of neurons in the cerebral cortex and cerebellum. It is a secreted glycoprotein which is essential for neuronal migration in the cortex. RELN regulates microtubule function in neurons and neuronal migration. It affects migration of sympathetic preganglionic neurons in the spinal cord, where it seems to act as a barrier to neuronal migration. Enzymatic activity is important for the modulation of cell adhesion. Binding to the extracellular domains of lipoprotein receptors VLDLR and ApoER2, RELN induces tyrosine phosphorylation of Dab1 and modulation of Tau phosphorylation. Defects in RELN are the cause of lissencephaly type 2 (LIS2).

## Stockage

Stockage:

Stocker à -20°C. Stable pendant un an après l'expédition.

Tampon de stockage:

PBS avec azoture de sodium à 0,02 % et glycérol à 50 % pH 7,3

L'aliquotage n'est pas nécessaire pour le stockage à -20C

\*\*\* Les 20ul contiennent 0,1% de BSA.

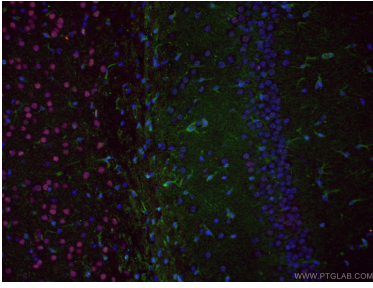
For technical support and original validation data for this product please contact:

T: 1 (888) 4PTGLAB (1-888-478-4522) (toll free in USA), or 1(312) 455-8498 (outside USA)

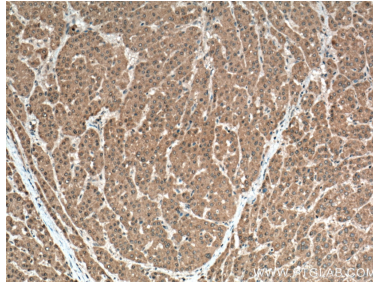
E: proteintech@ptglab.com  
W: ptglab.com

This product is exclusively available under Proteintech Group brand and is not available to purchase from any other manufacturer.

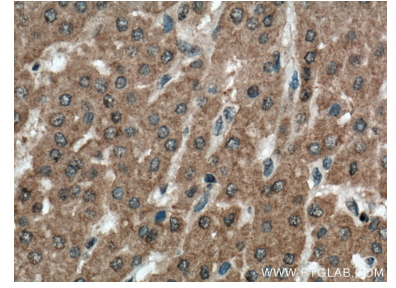
## Données de validation sélectionnées



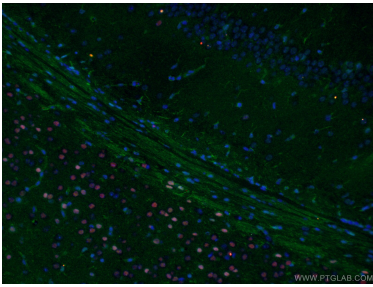
Dual immunofluorescent analysis of (4% PFA) fixed mouse brain tissue using 20689-1-AP (RELN antibody) at dilution of 1:50 and 66564-1-Ig (Tbr1 antibody), further stained with Alexa Fluor 488-Conjugated AffiniPure Goat Anti-Rabbit IgG(H+L) for 20689-1-AP and Alexa Fluor 594-Conjugated AffiniPure Goat Anti-Mouse IgG(H+L) for 66564-1-Ig.



Immunohistochemical analysis of paraffin-embedded human liver cancer tissue slide using 20689-1-AP (RELN antibody) at dilution of 1:200 (under 10x lens. Heat mediated antigen retrieval with Tris-EDTA buffer (pH 9.0).



Immunohistochemical analysis of paraffin-embedded human liver cancer tissue slide using 20689-1-AP (RELN antibody) at dilution of 1:200 (under 40x lens. Heat mediated antigen retrieval with Tris-EDTA buffer (pH 9.0).



Dual immunofluorescent analysis of (4% PFA) fixed mouse brain tissue using 20689-1-AP (RELN antibody) at dilution of 1:50 and 66564-1-Ig (Tbr1 antibody), further stained with Alexa Fluor 488-Conjugated AffiniPure Goat Anti-Rabbit IgG(H+L) for 20689-1-AP and Alexa Fluor 594-Conjugated AffiniPure Goat Anti-Mouse IgG(H+L) for 66564-1-Ig.