

À des fins de recherche uniquement

Anticorps Polyclonal de lapin anti-RUNX2



Numéro de catalogue: 20700-1-AP

Phare

96 Publications

Informations de base

Numéro de catalogue:

20700-1-AP

Taille:

150ul, Concentration: 450 µg/ml by Nanodrop;

Hôte:

Lapin

Isotype:

IgG

Numéro d'acquisition GenBank:

NM_004348

Identification du gène (NCBI):

860

Nom complet:

runt-related transcription factor 2

MW calculé

57 kDa

MW observés:

57-60 kDa

Méthode de purification:

Purification par affinité contre l'antigène

Dilutions recommandées:

WB 1:200-1:1000

IF 1:50-1:500

Applications

Applications testées:

IF, WB, ELISA

Demandes citées:

ChIP, IF, IHC, WB

Spécificité de l'espèce:

Humain, rat, souris

Espèces citées:

Humain, poulet, rat, souris

Contrôles positifs:

WB : cellules ROS1728, cellules MCF-7

IF : tissu cérébral de souris,

Informations générales

RUNX2, also named as AML3, CBFA1, OSF2 and PEBP2A, is a Transcription factor which involved in osteoblastic differentiation and skeletal morphogenesis. It is essential for the maturation of osteoblasts and both intramembranous and endochondral ossification. CBF binds to the core site, 5'-PYGPGGT-3', of a number of enhancers and promoters, including murine leukemia virus, polyomavirus enhancer, T-cell receptor enhancers, osteocalcin, osteopontin, bone sialoprotein, alpha 1(I) collagen, LCK, IL-3 and GM-CSF promoters. By similarity, RUNX2 inhibits MYST4-dependent transcriptional activation. The antibody is specific to RUNX2.

Publications notables

Autrice	Pubmed ID	Journal	Application
Yitong Zhao	36156740	J Bone Miner Metab	WB
Ki Mo Lee	28946662	Int J Mol Sci	WB
Lishan Lin	36232582	Int J Mol Sci	WB,IF

Stockage

Stockage:

Stocker à -20°C. Stable pendant un an après l'expédition.

Tampon de stockage:

PBS avec azoture de sodium à 0,02 % et glycérol à 50 % pH 7,3

L'aliquotage n'est pas nécessaire pour le stockage à -20C

*** Les 20ul contiennent 0,1% de BSA.

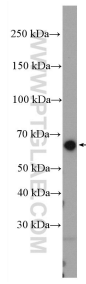
For technical support and original validation data for this product please contact:

T: 1 (888) 4PTGLAB (1-888-478-4522) (toll free in USA), or 1(312) 455-8498 (outside USA)

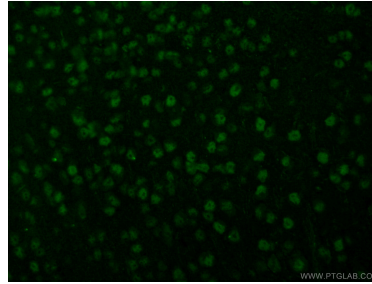
E: proteintech@ptglab.com
W: ptglab.com

This product is exclusively available under Proteintech Group brand and is not available to purchase from any other manufacturer.

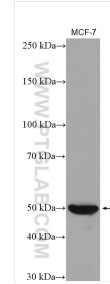
Données de validation sélectionnées



ROS1728 cells were subjected to SDS PAGE followed by western blot with 20700-1-AP (RUNX2 antibody) at dilution of 1:300 incubated at room temperature for 1.5 hours.



Immunofluorescent analysis of (4% PFA) fixed mouse brain tissue using 20700-1-AP (RUNX2 antibody) at dilution of 1:50 and Alexa Fluor 488-Conjugated AffiniPure Goat Anti-Rabbit IgG(H+L).



MCF-7 cells were subjected to SDS PAGE followed by western blot with 20700-1-AP (RUNX2 antibody) at dilution of 1:2000 incubated at room temperature for 1.5 hours.