

À des fins de recherche uniquement

# Anticorps Polyclonal de lapin anti-GHR



Numéro de catalogue: 20713-1-AP

Phare

5 Publications

## Informations de base

Numéro de catalogue:

20713-1-AP

Taille:

150ul, Concentration: 400 µg/ml by Nanodrop and 360 µg/ml by Bradford method using BSA as the standard;

Hôte:

Lapin

Isotype:

IgG

Numéro d'acquisition GenBank:

NM\_000163

Identification du gène (NCBI):

2690

Nom complet:

GH binding protein

MW calculé

72 kDa

MW observés:

120 kDa

Méthode de purification:

Purification par affinité contre l'antigène

Dilutions recommandées:

WB 1:500-1:1000

IHC 1:50-1:500

IF 1:50-1:500

## Applications

Applications testées:

IF, IHC, WB, ELISA

Demandes citées:

WB

Spécificité de l'espèce:

Humain, porc

Espèces citées:

Humain

Contrôles positifs:

WB : tissu hépatique de porc, tissu pulmonaire de porc

IHC : tissu hépatique humain,

IF : cellules HepG2,

**Remarque-IHC: il est suggéré de démasquer l'antigène avec un tampon de TE buffer pH 9,0; (\*) À défaut, le démasquage de l'antigène peut être effectué avec un tampon citrate pH 6,0.**

## Informations générales

GH is a peptide hormone with many pleiotropic actions, including the regulation of metabolism, postnatal growth, cognition, immune, cardiac and renal systems and gut function (PMID: 26059750). GH exerts these actions primarily through alterations in gene expression, initiated by activation of its membrane receptor GHR and the resultant activation of the associated JAK2 and Src family kinases. GH receptor (GHR) is a member of the cytokine receptor family. Mutations in GHR gene have been associated with Laron syndrome, also known as the GH insensitivity syndrome (GHIS), a disorder characterized by short stature.

## Publications notables

Autrice	Pubmed ID	Journal	Application
Mo Cheng	31725956	FEBS Open Bio	WB
Hongmei Zhang	34252534	Cell Signal	WB
Hong-Zhu Yan	33492754	J Cell Mol Med	WB

## Stockage

Stockage:

Stocker à -20°C. Stable pendant un an après l'expédition.

Tampon de stockage:

PBS avec azoture de sodium à 0,02 % et glycérol à 50 % pH 7,3

L'aliquotage n'est pas nécessaire pour le stockage à -20C

**\*\*\* Les 20ul contiennent 0,1% de BSA.**

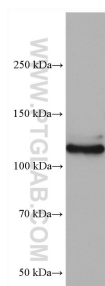
For technical support and original validation data for this product please contact:

T: 1 (888) 4PTGLAB (1-888-478-4522) (toll free in USA), or 1(312) 455-8498 (outside USA)

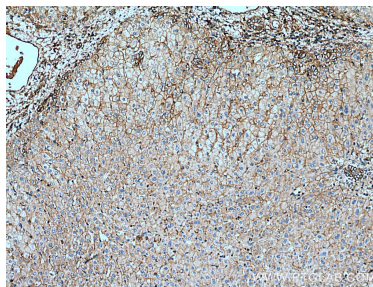
E: [proteintech@ptglab.com](mailto:proteintech@ptglab.com)  
W: [ptglab.com](http://ptglab.com)

**This product is exclusively available under Proteintech Group brand and is not available to purchase from any other manufacturer.**

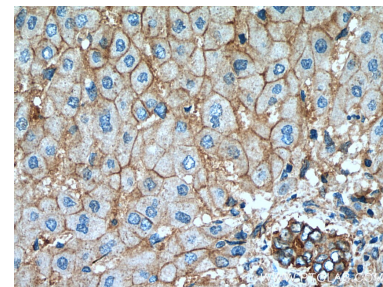
## Données de validation sélectionnées



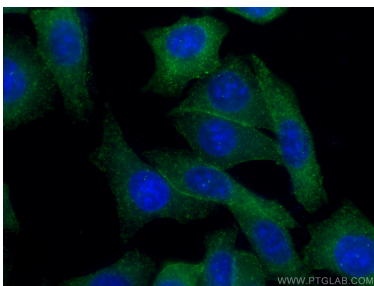
pig liver tissue were subjected to SDS PAGE followed by western blot with 20713-1-AP (GHR antibody) at dilution of 1:600 incubated at room temperature for 1.5 hours.



Immunohistochemical analysis of paraffin-embedded human liver tissue slide using 20713-1-AP (GHR antibody) at dilution of 1:200 (under 10x lens). Heat mediated antigen retrieval with Tris-EDTA buffer (pH 9.0).



Immunohistochemical analysis of paraffin-embedded human liver tissue slide using 20713-1-AP (GHR antibody) at dilution of 1:200 (under 40x lens). Heat mediated antigen retrieval with Tris-EDTA buffer (pH 9.0).



Immunofluorescent analysis of (-20°C Ethanol) fixed HepG2 cells using 20713-1-AP (GHR antibody), at dilution of 1:200 and CoraLite®488-Conjugated AffiniPure Goat Anti-Rabbit IgG(H+L).