

À des fins de recherche uniquement

# Anticorps Polyclonal de lapin anti-ARX



Numéro de catalogue: 20739-1-AP

## Informations de base

<b>Numéro de catalogue:</b> 20739-1-AP	<b>Numéro d'acquisition GenBank:</b> NM_139058	<b>Méthode de purification:</b> Purification par affinité contre l'antigène
<b>Taille:</b> 150ul , Concentration: 400 µg/ml by Nanodrop and 280 µg/ml by Bradford method using BSA as the standard;	<b>Identification du gène (NCBI):</b> 170302	<b>Dilutions recommandées:</b> WB 1:200-1:1000
<b>Hôte:</b> Lapin	<b>Nom complet:</b> aristalless related homeobox	
<b>Isotype:</b> IgG	<b>MW calculé:</b> 58 kDa	
	<b>MW observés:</b> 58 kDa	

## Applications

<b>Applications testées:</b> WB, ELISA	<b>Contrôles positifs:</b> WB : cellules NIH/3T3, cellules SH-SY5Y
<b>Spécificité de l'espèce:</b> Humain, souris	

## Informations générales

ARX belongs to the paired homeobox family and Bicoid subfamily. It is a transcription factor which required for normal brain development. ARX may be important for maintenance of specific neuronal subtypes in the cerebral cortex and axonal guidance in the floor plate. Defects in ARX are the cause of lissencephaly X-linked type 2 (LISX2), epileptic encephalopathy early infantile type 1 (EIEE1), Partington syndrome (PRTS), mental retardation X-linked ARX-related (MRXARX), and agenesis of the corpus callosum with abnormal genitalia (ACCAG). The antibody is specific to ARX. This is a rabbit polyclonal antibody raised against a peptide mapping within human ARX.

## Stockage

**Stockage:**  
Stocker à -20°C. Stable pendant un an après l'expédition.  
**Tampon de stockage:**  
PBS avec azoture de sodium à 0,02 % et glycérol à 50 % pH 7,3  
L'aliquotage n'est pas nécessaire pour le stockage à -20C

\*\*\* Les 20ul contiennent 0,1% de BSA.

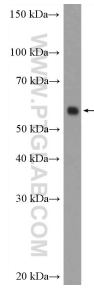
For technical support and original validation data for this product please contact:

T: 1 (888) 4PTGLAB (1-888-478-4522) (toll free in USA), or 1(312) 455-8498 (outside USA)

E: [proteintech@ptglab.com](mailto:proteintech@ptglab.com)  
W: [ptglab.com](http://ptglab.com)

This product is exclusively available under Proteintech Group brand and is not available to purchase from any other manufacturer.

## Données de validation sélectionnées



NIH/3T3 cells were subjected to SDS PAGE followed by western blot with 20739-1-AP (ARX Antibody) at dilution of 1:300 incubated at room temperature for 1.5 hours.