

À des fins de recherche uniquement

Anticorps Polyclonal de lapin anti-SOX1



Numéro de catalogue: 20744-1-AP

1 Publications

Informations de base

Numéro de catalogue: 20744-1-AP	Numéro d'acquisition GenBank: NM_005986	Méthode de purification: Purification par affinité contre l'antigène
Taille: 150ul , Concentration: 400 µg/ml by Nanodrop and 327 µg/ml by Bradford method using BSA as the standard;	Identification du gène (NCBI): 6656	Dilutions recommandées: WB 1:200-1:1000
Hôte: Lapin	Nom complet: SRY (sex determining region Y)-box 1	
Isotype: IgG	MW calculé: 39 kDa	
	MW observés: 45-50 kDa	

Applications

Applications testées: WB, ELISA	Contrôles positifs: WB : cellule NCCIT,
Demandes citées: WB	
Spécificité de l'espèce: Humain	
Espèces citées: Humain	

Informations générales

Sox genes comprise a family of genes that are related to the mammalian sex determining gene SRY. These genes similarly contain sequences that encode for the HMG-box domain, which is responsible for the sequence-specific DNA-binding activity. Sox genes encode putative transcriptional regulators implicated in the decision of cell fates during development and the control of diverse developmental processes. SOX1 may function as a switch in neuronal development and keeps neural cells undifferentiated by counteracting the activity of proneural proteins and suppresses neuronal differentiation.

Publications notables

Autrice	Pubmed ID	Journal	Application
Chaoshuai Zhao	32918341	J Cell Mol Med	WB

Stockage

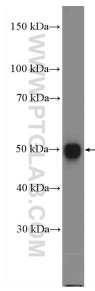
Stockage:
Stocker à -20°C. Stable pendant un an après l'expédition.
Tampon de stockage:
PBS avec azoture de sodium à 0,02 % et glycérol à 50 % pH 7,3
L'aliquotage n'est pas nécessaire pour le stockage à -20C

*** Les 20ul contiennent 0,1% de BSA.

For technical support and original validation data for this product please contact:
T: 1 (888) 4PTGLAB (1-888-478-4522) (toll free in USA), or 1(312) 455-8498 (outside USA)
E: proteintech@ptglab.com
W: ptglab.com

This product is exclusively available under Proteintech Group brand and is not available to purchase from any other manufacturer.

Données de validation sélectionnées



NCCIT cell were subjected to SDS PAGE followed by western blot with 20744-1-AP (SOX1 Antibody) at dilution of 1:100 incubated at room temperature for 1.5 hours.