

À des fins de recherche uniquement

Anticorps Polyclonal de lapin anti-NPT1



Numéro de catalogue: 20751-1-AP

3 Publications

Informations de base

Numéro de catalogue: 20751-1-AP	Numéro d'acquisition GenBank: BC101745	Méthode de purification: Purification par affinité contre l'antigène
Taille: 150ul, Concentration: 500 µg/ml by Nanodrop and 300 µg/ml by Bradford method using BSA as the standard;	Identification du gène (NCBI): 6568	Dilutions recommandées: WB 1:500-1:2400
Hôte: Lapin	Nom complet: solute carrier family 17 (sodium phosphate), member 1	
Isotype: IgG	MW calculé: 467 aa, 51 kDa	
Immunogen Catalog Number: AG12819	MW observés: 50 kDa, 60-64 kDa	

Applications

Applications testées: WB, ELISA	Contrôles positifs: WB : tissu placentaire humain, tissu rénal de souris
Demandes citées: WB	
Spécificité de l'espèce: Humain, rat, souris	
Espèces citées: Humain, souris	

Informations générales

NPT1 (also known as SLC17A1) is a member of sodium-dependent inorganic phosphate transporters (NPT), which regulates entrance into the cellular membrane. NPT1 is mainly expressed in the kidney transporting small organic anions such as PAH (para-aminohippurate), but it is also found in the liver and brain. NTP1 localizes to the apical membrane of renal proximal tubular cells. NPT1 exists two isoforms due to the alternative splicing. Western blot analysis using this antibody detected a major band around 45-55 kDa in kidney tissue.

Publications notables

Autrice	Pubmed ID	Journal	Application
Ruixia Bao	34785103	Phytomedicine	WB
Jing Xiao	29497172	Exp Mol Med	WB
Ruixia Bao	31920654	Front Pharmacol	WB

Stockage

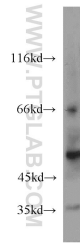
Stockage:
Stocker à -20°C. Stable pendant un an après l'expédition.
Tampon de stockage:
PBS avec azoture de sodium à 0,02 % et glycérol à 50 % pH 7,3
L'aliquotage n'est pas nécessaire pour le stockage à -20C

*** Les 20ul contiennent 0,1% de BSA.

For technical support and original validation data for this product please contact:
T: 1 (888) 4PTGLAB (1-888-478-4522) (toll free in USA), or 1(312) 455-8498 (outside USA)
E: proteintech@ptglab.com
W: ptglab.com

This product is exclusively available under Proteintech Group brand and is not available to purchase from any other manufacturer.

Données de validation sélectionnées



human placenta tissue were subjected to SDS PAGE followed by western blot with 20751-1-AP (NPT1 antibody) at dilution of 1:300 incubated at room temperature for 1.5 hours.