

À des fins de recherche uniquement

Anticorps Polyclonal de lapin anti-GSDMD



Numéro de catalogue: 20770-1-AP

Phare

153 Publications

Informations de base

Numéro de catalogue:

20770-1-AP

Taille:

150ul, Concentration: 550 µg/ml by Nanodrop;

Hôte:

Lapin

Isotype:

IgG

Immunogen Catalog Number:

AG14757

Numéro d'acquisition GenBank:

BC008904

Identification du gène (NCBI):

79792

Nom complet:

gasdermin D

MW calculé

484 aa, 53 kDa

MW observés:

50-53 kDa

Méthode de purification:

Purification par affinité contre l'antigène

Dilutions recommandées:

WB 1:2000-1:10000

IF 1:50-1:500

Applications

Applications testées:

FC, IF, WB, ELISA

Demandes citées:

FC, IF, IHC, WB

Spécificité de l'espèce:

Humain, rat, souris

Espèces citées:

bovin, Humain, porc, rat, souris

Contrôles positifs:

WB : cellules A431, cellules C6, cellules Jurkat, cellules NIH/3T3, tissu cérébral de rat, tissu hépatique de rat

IF : cellules HeLa,

Informations générales

GSDMD is a member of the gasdermin family. Members of this family appear to play a role in regulation of epithelial proliferation. GSDMD has been suggested to act as a tumor suppressor. Recently, GSDMD is identified as a new component of inflammasomes, and it is an executor of pyroptosis and required for interleukin-1 β secretion. Cleavage of GSDMD by inflammatory caspases determines pyroptotic cell death.

Publications notables

Autrice	Pubmed ID	Journal	Application
Xuye Jiang	34630100	Front Pharmacol	WB
Jun Tao	33010604	Placenta	WB
Youliang Wang	31608008	Front Endocrinol (Lausanne)	IHC

Stockage

Stockage:

Stocker à -20°C. Stable pendant un an après l'expédition.

Tampon de stockage:

PBS avec azoture de sodium à 0,02 % et glycérol à 50 % pH 7,3

L'aliquotage n'est pas nécessaire pour le stockage à -20C

*** Les 20ul contiennent 0,1% de BSA.

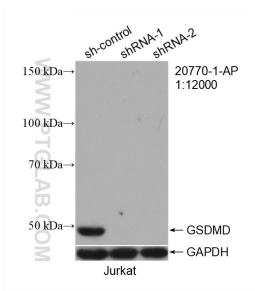
For technical support and original validation data for this product please contact:

T: 1 (888) 4PTGLAB (1-888-478-4522) (toll free in USA), or 1(312) 455-8498 (outside USA)

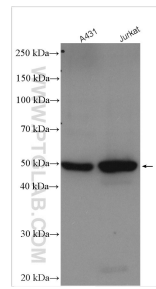
E: proteintech@ptglab.com
W: ptglab.com

This product is exclusively available under Proteintech Group brand and is not available to purchase from any other manufacturer.

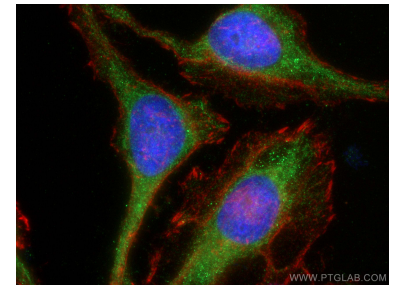
Données de validation sélectionnées



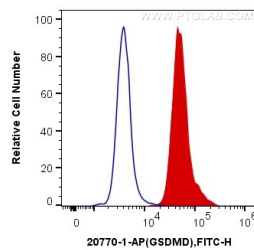
WB result of GSDMD antibody (20770-1-AP; 1:12000; incubated at room temperature for 1.5 hours) with sh-Control and sh-GSDMD transfected Jurkat cells.



Various lysates were subjected to SDS PAGE followed by western blot with 20770-1-AP (GSDMD antibody) at dilution of 1:5000 incubated at room temperature for 1.5 hours.



Immunofluorescent analysis of (-20°C Ethanol) fixed HeLa cells using GSDMD antibody (20770-1-AP) at dilution of 1:200 and CoraLite@488-Conjugated AffiniPure Goat Anti-Rabbit IgG(H+L), CL594-Phalloidin (red).



1X10⁶ Jurkat cells were intracellularly stained with 0.2 ug Anti-Human GSDMD (20770-1-AP) and CoraLite@488-Conjugated AffiniPure Goat Anti-Rabbit IgG(H+L) at dilution 1:1000 (red), or 0.2 ug Control Antibody. Cells were fixed with 4% PFA and permeabilized with Flow Cytometry Perm Buffer (PF00011-C).