

À des fins de recherche uniquement

# Anticorps Polyclonal de lapin anti-CC2D1B



Numéro de catalogue: 20774-1-AP

Phare

3 Publications

## Informations de base

Numéro de catalogue:

20774-1-AP

Taille:

150ul, Concentration: 600 µg/ml by Nanodrop and 300 µg/ml by Bradford method using BSA as the standard;

Hôte:

Lapin

Isotype:

IgG

Immunogen Catalog Number:

AG14767

Numéro d'acquisition GenBank:

BC007912

Identification du gène (NCBI):

200014

Nom complet:

coiled-coil and C2 domain containing 1B

MW calculé

858 aa, 94 kDa

MW observés:

120 kDa

Méthode de purification:

Purification par affinité contre l'antigène

Dilutions recommandées:

WB 1:1000-1:4000

IP 0.5-4.0 ug for IP and 1:500-1:1000 for WB

## Applications

Applications testées:

IP, WB, ELISA

Demandes citées:

IF, WB

Spécificité de l'espèce:

Humain, rat, souris

Espèces citées:

rat, souris

Contrôles positifs:

WB : tissu cérébral de souris, cellules SH-SY5Y, tissu placentaire humain, tissu rénal de souris

IP : tissu cérébral de souris,

## Informations générales

CC2D1B/Freud2 and CC2D1A/Freud1 are two homologs belonging to the evolutionary conserved Lgd protein family that is involved in endosomal trafficking. CC2D1B has been identified as the novel repressor of postsynaptic 5-HT1A expression. The predicted molecular weight of CC2D1B is 89 kDa, but the observed molecular weight is around 120 kDa, which may be caused by post-translational modification. This antibody is specific to CC2D1B, which has been confirmed by siRNA test. (19423080, 2672064)

## Publications notables

Autrice	Pubmed ID	Journal	Application
Jenica Acheta	35592111	Front Mol Neurosci	WB
Belin Sophie	31379499	Front Mol Neurosci	WB,IF
Nadja Drusenheimer	26720614	PLoS Genet	WB,IF

## Stockage

Stockage:

Stocker à -20°C. Stable pendant un an après l'expédition.

Tampon de stockage:

PBS avec azoture de sodium à 0,02 % et glycérol à 50 % pH 7,3

L'aliquotage n'est pas nécessaire pour le stockage à -20C

\*\*\* Les 20ul contiennent 0,1% de BSA.

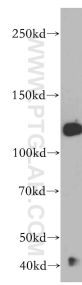
For technical support and original validation data for this product please contact:

T: 1 (888) 4PTGLAB (1-888-478-4522) (toll free in USA), or 1(312) 455-8498 (outside USA)

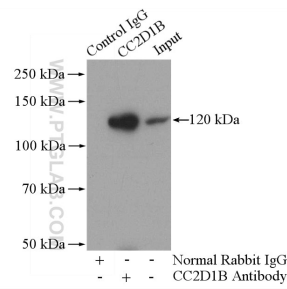
E: [proteintech@ptglab.com](mailto:proteintech@ptglab.com)  
W: [ptglab.com](http://ptglab.com)

This product is exclusively available under Proteintech Group brand and is not available to purchase from any other manufacturer.

## Données de validation sélectionnées



mouse brain tissue were subjected to SDS PAGE followed by western blot with 20774-1-AP (CC2D1B antibody) at dilution of 1:500 incubated at room temperature for 1.5 hours.



IP Result of anti-CC2D1B (IP:20774-1-AP, 4ug; Detection:20774-1-AP 1:500) with mouse brain tissue lysate 2560ug.