

À des fins de recherche uniquement

Anticorps Polyclonal de lapin anti-KIFC1



Numéro de catalogue: 20790-1-AP

Phare

9 Publications

Informations de base

Numéro de catalogue:

20790-1-AP

Taille:

150ul, Concentration: 850 µg/ml by Nanodrop and 400 µg/ml by Bradford method using BSA as the standard;

Hôte:

Lapin

Isotype:

IgG

Immunogen Catalog Number:

AG14492

Numéro d'acquisition GenBank:

BC000712

Identification du gène (NCBI):

3833

Nom complet:

kinesin family member C1

MW calculé

673 aa, 74 kDa

MW observés:

55-70 kDa

Méthode de purification:

Purification par affinité contre l'antigène

Dilutions recommandées:

WB 1:500-1:1000

IHC 1:50-1:500

IF 1:10-1:100

Applications

Applications testées:

IF, IHC, WB, ELISA

Demandes citées:

IF, IHC, Peptide array, WB

Spécificité de l'espèce:

Humain, rat, souris

Espèces citées:

Humain, rat, souris

Remarque-IHC: il est suggéré de démasquer l'antigène avec un tampon de TE buffer pH 9,0; (*) À défaut, 'le démasquage de l'antigène peut être effectué avec un tampon citrate pH 6,0.

Contrôles positifs:

WB : tissu testiculaire de rat, cellules HeLa, cellules NIH/3T3, tissu testiculaire de souris

IHC : tissu placentaire humain, tissu testiculaire humain

IF : cellules HeLa, cellules HepG2

Informations générales

KIFC1 is a molecular motor protein belonging to the kinesin-14 family that has motor domains at the C-terminus. KIFC1 is widely distributed, with highest expression in testis and participating in acrosome biogenesis and vesicle transport. It is also abundant in ovary, spleen, and liver. KIFC1 proteins are generally localized in the perinuclear region, and have been found to be involved chromosome alignment, congression and intracellular DNA transport. This antibody was raised against the C-terminal region of human KIFC1 protein, and recognizes 55-70 kDa of endogenous KIFC1 protein in multiple tissue lysates. (12826589, 15236353, 23543461)

Publications notables

Autrice	Pubmed ID	Journal	Application
Anusruti Sabui	36245925	Front Mol Neurosci	
Erlei Zhi	27690105	Genes (Basel)	WB,IF
Si-Hyung Lee	29042452	FASEB J	IF

Stockage

Stockage:

Stocker à -20°C. Stable pendant un an après l'expédition.

Tampon de stockage:

PBS avec azoture de sodium à 0,02 % et glycérol à 50 % pH 7,3

L'aliquotage n'est pas nécessaire pour le stockage à -20C

*** Les 20ul contiennent 0,1% de BSA.

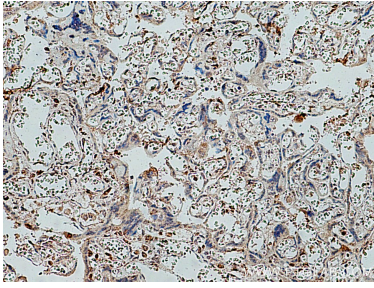
For technical support and original validation data for this product please contact:

T: 1 (888) 4PTGLAB (1-888-478-4522) (toll free in USA), or 1(312) 455-8498 (outside USA)

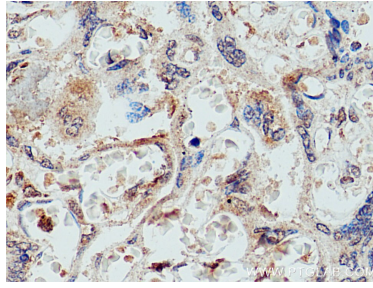
E: proteintech@ptglab.com
W: ptglab.com

This product is exclusively available under Proteintech Group brand and is not available to purchase from any other manufacturer.

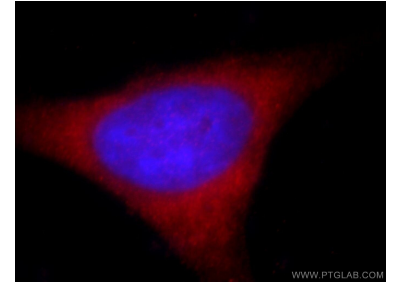
Données de validation sélectionnées



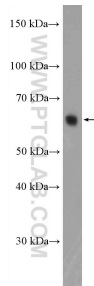
Immunohistochemical analysis of paraffin-embedded human placenta tissue slide using 20790-1-AP (KIFC1 antibody) at dilution of 1:200 (under 10x lens). Heat mediated antigen retrieval with Tris-EDTA buffer (pH 9.0).



Immunohistochemical analysis of paraffin-embedded human placenta tissue slide using 20790-1-AP (KIFC1 antibody) at dilution of 1:200 (under 40x lens). Heat mediated antigen retrieval with Tris-EDTA buffer (pH 9.0).



Immunofluorescent analysis of HeLa cells, using KIFC1 antibody 20790-1-AP at 1:25 dilution and Rhodamine-labeled goat anti-rabbit IgG (red). Blue pseudocolor = DAPI (fluorescent DNA dye).



rat testis tissue were subjected to SDS PAGE followed by western blot with 20790-1-AP (KIFC1 Antibody) at dilution of 1:600 incubated at room temperature for 1.5 hours.