

À des fins de recherche uniquement

Anticorps Polyclonal de lapin anti-CLASP1



Numéro de catalogue: 20803-1-AP

Informations de base

Numéro de catalogue: 20803-1-AP	Numéro d'acquisition GenBank: BC112940	Méthode de purification: Purification par affinité contre l'antigène
Taille: 150ul, Concentration: 300 µg/ml by Nanodrop and 227 µg/ml by Bradford method using BSA as the standard;	Identification du gène (NCBI): 23332	Dilutions recommandées: WB 1:500-1:3000 IP 0.5-4.0 ug for IP and 1:500-1:1000 for WB IHC 1:50-1:500
Hôte: Lapin	Nom complet: cytoplasmic linker associated protein 1	
Isotype: IgG	MW calculé: 1538 aa, 169 kDa	
Immunogen Catalog Number: AG14724	MW observés: 162 kDa	

Applications

Applications testées: IHC, IP, WB, ELISA	Contrôles positifs: WB : tissu cérébral de souris, tissu cérébral de rat IP : cellules HeLa, IHC : tissu testiculaire humain,
Spécificité de l'espèce: Humain, rat, souris	
Remarque-IHC: <i>il est suggéré de démasquer l'antigène avec un tampon de TE buffer pH 9.0; (*) À défaut, le démasquage de l'antigène peut être effectué avec un tampon citrate pH 6,0.</i>	

Informations générales

CLASP1 is a member of CLASP family. Members of the CLASP family of proteins are involved in multiple MT-dependent processes, including Golgi complex organization and trafficking, kinetochore fiber dynamics and flux, mitotic spindle assembly, and the stabilization of MT plus ends near the cortex. CLASP proteins regulate MT dynamics by promoting MT rescue and suppressing MT catastrophe. Recent work showed that CLASP1 activity is required for proper positioning of the mitotic spindle in both the C. elegans embryo and mammalian cells. Recent work has also identified roles CLASP1 in the regulation of spindle positioning.

Stockage

Stockage:
Stocker à -20°C. Stable pendant un an après l'expédition.
Tampon de stockage:
PBS avec azoture de sodium à 0,02 % et glycérol à 50 % pH 7,3
L'aliquotage n'est pas nécessaire pour le stockage à -20C

*** Les 20ul contiennent 0,1% de BSA.

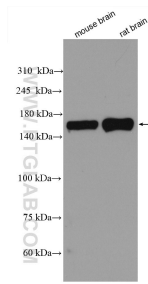
For technical support and original validation data for this product please contact:

T: 1 (888) 4PTGLAB (1-888-478-4522) (toll free in USA), or 1(312) 455-8498 (outside USA)

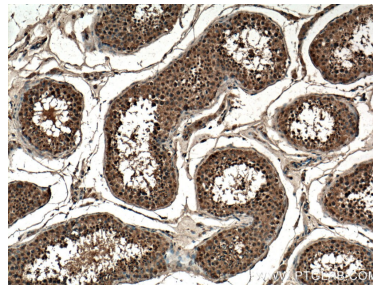
E: proteintech@ptglab.com
W: ptglab.com

This product is exclusively available under Proteintech Group brand and is not available to purchase from any other manufacturer.

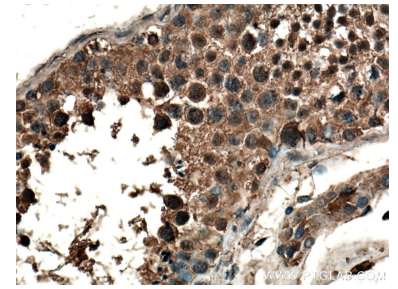
Données de validation sélectionnées



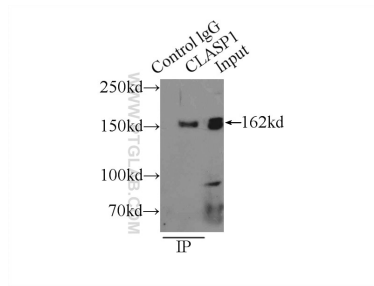
Various lysates were subjected to SDS PAGE followed by western blot with 20803-1-AP (CLASP1 antibody) at dilution of 1:1500 incubated at room temperature for 1.5 hours.



Immunohistochemical analysis of paraffin-embedded human testis tissue slide using 20803-1-AP (CLASP1 antibody) at dilution of 1:200 (under 10x lens. Heat mediated antigen retrieval with Tris-EDTA buffer (pH 9.0).



Immunohistochemical analysis of paraffin-embedded human testis tissue slide using 20803-1-AP (CLASP1 antibody) at dilution of 1:200 (under 40x lens. Heat mediated antigen retrieval with Tris-EDTA buffer (pH 9.0).



IP Result of anti-CLASP1 (IP:20803-1-AP, 4ug; Detection:20803-1-AP 1:500) with HeLa cells lysate 2000ug.