

À des fins de recherche uniquement

Anticorps Polyclonal de lapin anti-C9orf86



Numéro de catalogue: 20848-1-AP

1 Publications

Informations de base

Numéro de catalogue: 20848-1-AP	Numéro d'acquisition GenBank: BC002945	Méthode de purification: Purification par affinité contre l'antigène
Taille: 150ul, Concentration: 350 µg/ml by Nanodrop and 327 µg/ml by Bradford method using BSA as the standard;	Identification du gène (NCBI): 55684	Dilutions recommandées: WB 1:500-1:1000 IHC 1:50-1:500 IF 1:50-1:500
Hôte: Lapin	Nom complet: chromosome 9 open reading frame 86	
Isotype: IgG	MW calculé: 729 aa, 80 kDa	
Immunogen Catalog Number: AG14350	MW observés: 125 kDa	

Applications

Applications testées: IF, IHC, WB, ELISA	Contrôles positifs: WB : cellules MDA-MB-453s, IHC : tissu de cancer du sein humain, IF : cellules HeLa,
Demandes citées: WB	
Spécificité de l'espèce: Humain	
Espèces citées: Humain	
Remarque-IHC: il est suggéré de démasquer l'antigène avec un tampon de TE buffer pH 9,0; (*) A défaut, 'le démasquage de l'antigène peut être effectué avec un tampon citrate pH 6,0.	

Informations générales

C9orf86, also known as RBEL1 (Rab-like protein 1), is a novel subfamily of GTPases within the Ras superfamily. It has two splice variants, RBEL1A and RBEL1B. Unlike known Rabs that are mostly cytosolic, RBEL1B predominantly resides in the nucleus, whereas RBEL1A is localized primarily to the cytosol. C9orf86 is overexpressed in the majority of primary breast tumors, and knockdown of C9orf86 in MCF-7 breast cancer cells resulted in cell growth suppression associated with apoptosis [PMID: 23977139]. Western blot analysis revealed that the endogenous RBEL1 migrated at 110-125 kDa, 80 kDa, maybe due to a number of potential O-linked glycosylation sites.[PMID: 17962191]

Publications notables

Autrice	Pubmed ID	Journal	Application
Ning Wang	36806253	Cell Death Dis	WB

Stockage

Stockage:
Stocker à -20°C. Stable pendant un an après l'expédition.
Tampon de stockage:
PBS avec azote de sodium à 0,02 % et glycérol à 50 % pH 7,3
L'aliquotage n'est pas nécessaire pour le stockage à -20C

*** Les 20ul contiennent 0,1% de BSA.

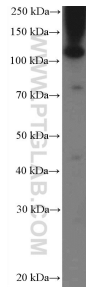
For technical support and original validation data for this product please contact:

T: 1 (888) 4PTGLAB (1-888-478-4522) (toll free in USA), or 1(312) 455-8498 (outside USA)

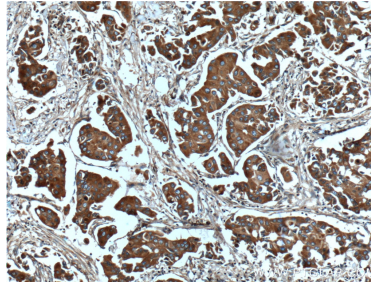
E: proteintech@ptglab.com
W: ptglab.com

This product is exclusively available under Proteintech Group brand and is not available to purchase from any other manufacturer.

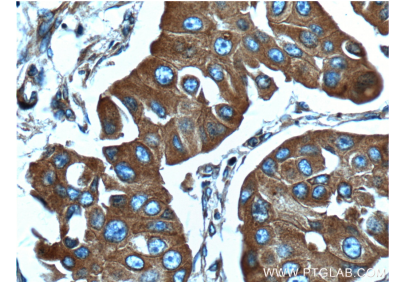
Données de validation sélectionnées



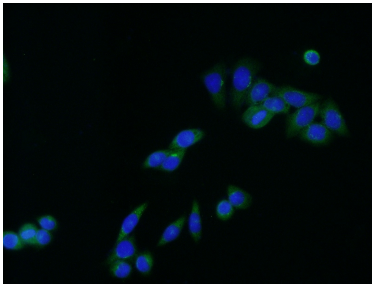
MDA-MB-453s cells were subjected to SDS PAGE followed by western blot with 20848-1-AP (C9orf86 Antibody) at dilution of 1:600 incubated at room temperature for 1.5 hours.



Immunohistochemical analysis of paraffin-embedded human breast cancer tissue slide using 20848-1-AP (C9orf86 Antibody) at dilution of 1:200 (under 10x lens). Heat mediated antigen retrieval with Tris-EDTA buffer (pH 9.0).



Immunohistochemical analysis of paraffin-embedded human breast cancer tissue slide using 20848-1-AP (C9orf86 Antibody) at dilution of 1:200 (under 40x lens). Heat mediated antigen retrieval with Tris-EDTA buffer (pH 9.0).



Immunofluorescent analysis of (-20°C Ethanol) fixed HeLa cells using 20848-1-AP (C9orf86 antibody) at dilution of 1:50 and Alexa Fluor 488-conjugated AffiniPure Goat Anti-Rabbit IgG(H+L).