

À des fins de recherche uniquement

Anticorps Polyclonal de lapin anti-IL-10



Numéro de catalogue: 20850-1-AP

99 Publications

Informations de base

Numéro de catalogue:

20850-1-AP

Numéro d'acquisition GenBank:

BC104252

Méthode de purification:

Purification par affinité contre l'antigène

Taille:

150ul, Concentration: 600 µg/ml by Nanodrop and 367 µg/ml by Bradford method using BSA as the standard;

Identification du gène (NCBI):

3586

Dilutions recommandées:

WB 1:500-1:2000

Hôte:

Lapin

Nom complet:

interleukin 10

MW calculé

21 kDa

Isotype:

IgG

Immunogen Catalog Number:

AG14644

Applications

Applications testées:

WB, ELISA

Contrôles positifs:

WB : Protéine recombinante, ag14644

Demandes citées:

ELISA, IF, IHC, WB

Spécificité de l'espèce:

Humain

Espèces citées:

Humain, porc, rat, singe, souris

Informations générales

The human IL10 gene is 4.7 kb in size and is located on the long arm of chromosome 1. It contains five exons. Biologically functional IL-10 exists in the form of a 36 kDa homodimer composed of two non-covalently bonded mono-mers each with 160 amino acids length. IL-10 is an anti-inflammatory cytokine, produced by T helper (Th) cells, macrophages, monocytes, and B cells, that plays a crucial role in preventing inflammatory and autoimmune pathologies. It downregulates the expression of Th1 cytokines, MHC class II antigens, and co-stimulatory molecules on macrophages. It also enhances B cell survival, proliferation, and antibody production. IL-10 can block NF-κB activity, and is involved in the regulation of the JAK-STAT signaling pathway. IL-10, along with its receptors, describes an important role in pathogenesis of various diseases, including infectious, inflammatory, autoimmune diseases. IL-10 mutations are associated with an increased susceptibility to HIV-1 infection and rheumatoid arthritis.

Publications notables

Autrice	Pubmed ID	Journal	Application
Zhaohua Shen	36182776	EBioMedicine	IHC
Chengmei Huang	34583750	J Exp Clin Cancer Res	WB
Zhihong Min	30546456	Oncol Lett	

Stockage

Stockage:

Stocker à -20°C. Stable pendant un an après l'expédition.

Tampon de stockage:

PBS avec azoture de sodium à 0,02 % et glycérol à 50 % pH 7,3

L'aliquotage n'est pas nécessaire pour le stockage à -20C

*** Les 20ul contiennent 0,1% de BSA.

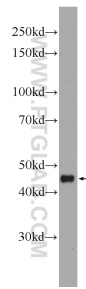
For technical support and original validation data for this product please contact:

T: 1 (888) 4PTGLAB (1-888-478-4522) (toll free in USA), or 1(312) 455-8498 (outside USA)

E: proteintech@ptglab.com
W: ptglab.com

This product is exclusively available under Proteintech Group brand and is not available to purchase from any other manufacturer.

Données de validation sélectionnées



Recombinant protein were subjected to SDS PAGE followed by western blot with 20850-1-AP (IL-10 antibody at dilution of 1:1000 incubated at room temperature for 1.5 hours.