

À des fins de recherche uniquement

Anticorps Polyclonal de lapin anti-TFPI



Numéro de catalogue: 20865-1-AP

2 Publications

Informations de base

Numéro de catalogue: 20865-1-AP	Numéro d'acquisition GenBank: BC015514	Méthode de purification: Purification par affinité contre l'antigène
Taille: 150ul , Concentration: 170 µg/ml by Nanodrop and 153 µg/ml by Bradford method using BSA as the standard;	Identification du gène (NCBI): 7035	Dilutions recommandées: WB 1:500-1:1000 IF 1:50-1:500
Hôte: Lapin	Nom complet: tissue factor pathway inhibitor (lipoprotein-associated coagulation inhibitor)	
Isotype: IgG	MW calculé 251aa,29 kDa; 304aa,35 kDa	
Immunogen Catalog Number: AG14913	MW observés: 40-45 kDa	

Applications

Applications testées: IF, WB, ELISA	Contrôles positifs: WB : cellules HeLa, cellules HepG2 IF : cellules HepG2,
Demandes citées: IHC, WB	
Spécificité de l'espèce: Humain	
Espèces citées: Humain	

Informations générales

Tissue factor pathway inhibitor (TFPI) is a critical anticoagulant protein present in endothelium and platelets. TFPI is produced as two major isoforms in humans, TFPIa and TFPIb that result from alternative splicing. The TFPIb isoform localizes to the endothelium surface where it is a potent inhibitor of tissue factor-factor VIIa complexes that initiate blood coagulation. The TFPIa isoform is present in platelets. TFPI is a Kunitz-type serine protease inhibitor that exerts anticoagulant activity by blocking early procoagulant stimuli. TFPI can enhance anti-thrombotic treatment in sepsis, inflammatory diseases, and cardiovascular diseases.

Publications notables

Autrice	Pubmed ID	Journal	Application
Chunyan Luo	32445923	Gene	WB
Kang An	29364003	Clin Appl Thromb Hemost	IHC

Stockage

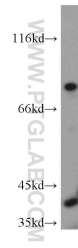
Stockage:
Stocker à -20°C. Stable pendant un an après l'expédition.
Tampon de stockage:
PBS avec azoture de sodium à 0,02 % et glycérol à 50 % pH 7,3
L'aliquotage n'est pas nécessaire pour le stockage à -20C

*** Les 20ul contiennent 0,1% de BSA.

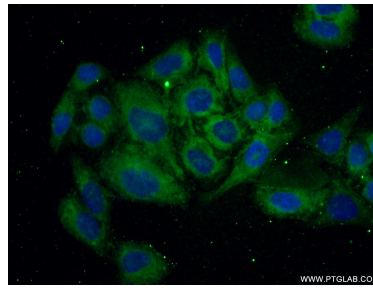
For technical support and original validation data for this product please contact:
T: 1 (888) 4PTGLAB (1-888-478-4522) (toll free in USA), or 1(312) 455-8498 (outside USA)
E: proteintech@ptglab.com
W: ptglab.com

This product is exclusively available under Proteintech Group brand and is not available to purchase from any other manufacturer.

Données de validation sélectionnées



HeLa cells were subjected to SDS PAGE followed by western blot with 20865-1-AP (TFPI antibody) at dilution of 1:500 incubated at room temperature for 1.5 hours.



Immunofluorescent analysis of (-20°C Ethanol) fixed HepG2 cells using 20865-1-AP (TFPI antibody) at dilution of 1:50 and Alexa Fluor 488-conjugated AffiniPure Goat Anti-Rabbit IgG(H+L).