

À des fins de recherche uniquement

Anticorps Polyclonal de lapin anti- PKC Epsilon



Numéro de catalogue: 20877-1-AP

Phare

18 Publications

Informations de base

Numéro de catalogue:
20877-1-AP

Taille:
150ul, Concentration: 450 µg/ml by
Nanodrop and 293 µg/ml by Bradford
method using BSA as the standard;

Hôte:
Lapin

Isotype:
IgG

Immunogen Catalog Number:
AG14976

Numéro d'acquisition GenBank:
BC109033

Identification du gène (NCBI):
5581

Nom complet:
protein kinase C, epsilon

MW calculé
737 aa, 84 kDa

MW observés:
84 kDa

Méthode de purification:

Purification par affinité contre
l'antigène

Dilutions recommandées:

WB 1:5000-1:50000
IP 0.5-4.0 ug for IP and 1:500-1:1000
for WB
IHC 1:50-1:500
IF 1:50-1:500

Applications

Applications testées:

FC, IF, IHC, IP, WB, ELISA

Demandes citées:

IF, IHC, IP, WB

Spécificité de l'espèce:

Humain, rat, souris

Espèces citées:

Humain, rat, souris, Hamster

**Remarque-IHC: il est suggéré de démasquer
l'antigène avec un tampon de TE buffer pH
9.0; (*) A défaut, 'le démasquage de
l'antigène peut être 'effectué avec un
tampon citrate pH 6,0.**

Contrôles positifs:

WB : tissu cérébral de souris, cellules SH-SY5Y, tissu
cérébral de rat

IP : cellules SH-SY5Y,

IHC : tissu cérébral de souris, tissu de cancer de la
thyroïde humain

IF : tissu cérébral de souris, cellules HeLa, cellules
U2OS

Informations générales

Publications notables

Autrice	Pubmed ID	Journal	Application
Yupeng Hu	27649624	Chem Biol Interact	WB
Shuyan Liu	36158087	Heliyon	WB
Guangming Zhang	34470528	Cell Transplant	WB

Stockage

Stockage:

Stocker à -20°C. Stable pendant un an après l'expédition.

Tampon de stockage:

PBS avec azoture de sodium à 0,02 % et glycérol à 50 % pH 7,3

L'aliquotage n'est pas nécessaire pour le stockage à -20C

*** Les 20ul contiennent 0,1% de BSA.

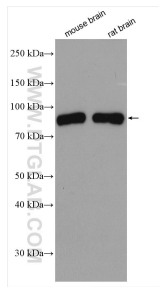
For technical support and original validation data for this product please contact:

T: 1 (888) 4PTGLAB (1-888-478-4522) (toll free
in USA), or 1(312) 455-8498 (outside USA)

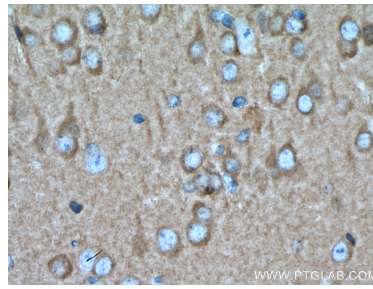
E: proteintech@ptglab.com
W: ptglab.com

This product is exclusively available under Proteintech
Group brand and is not available to purchase from any
other manufacturer.

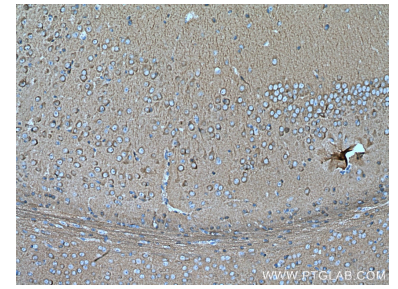
Données de validation sélectionnées



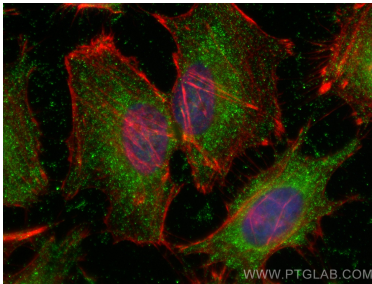
Various lysates were subjected to SDS PAGE followed by western blot with 20877-1-AP (PKC Epsilon antibody) at dilution of 1:10000 incubated at room temperature for 1.5 hours.



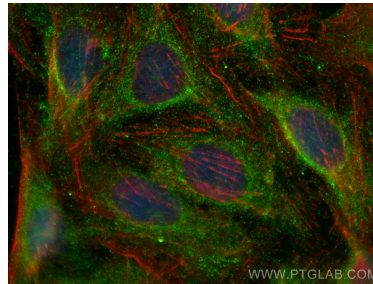
Immunohistochemical analysis of paraffin-embedded mouse brain tissue slide using 20877-1-AP (PKC epsilon antibody) at dilution of 1:200 (under 40x lens). Heat mediated antigen retrieved with Sodium Citrate buffer (pH 6.0).



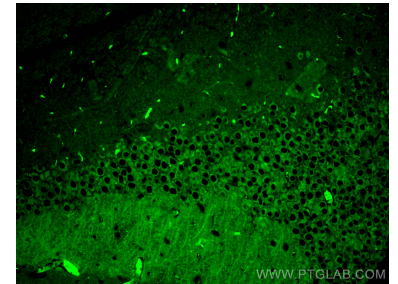
Immunohistochemical analysis of paraffin-embedded mouse brain tissue slide using 20877-1-AP (PKC epsilon antibody) at dilution of 1:200 (under 10x lens). Heat mediated antigen retrieved with Sodium Citrate buffer (pH 6.0).



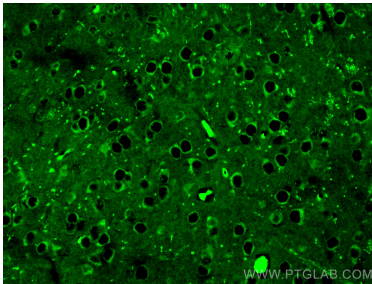
Immunofluorescent analysis of (-20°C Ethanol) fixed HeLa cells using PKC Epsilon antibody (20877-1-AP) at dilution of 1:200 and CoraLite@488-Conjugated AffiniPure Goat Anti-Rabbit IgG(H+L), CL594-Phalloidin (red).



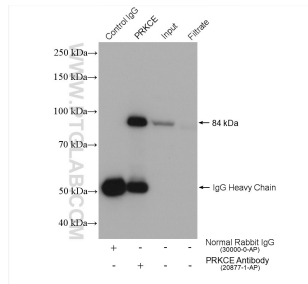
Immunofluorescent analysis of (-20°C Ethanol) fixed U2OS cells using PKC Epsilon antibody (20877-1-AP) at dilution of 1:200 and CoraLite@488-Conjugated AffiniPure Goat Anti-Rabbit IgG(H+L), CL594-Phalloidin (red).



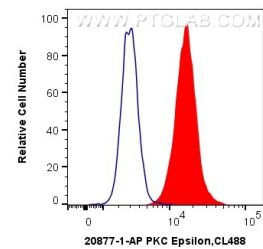
Immunofluorescent analysis of (4% PFA) fixed mouse brain tissue using PKC Epsilon antibody (20877-1-AP) at dilution of 1:200 and CoraLite@488-Conjugated AffiniPure Goat Anti-Rabbit IgG(H+L).



Immunofluorescent analysis of (4% PFA) fixed mouse brain tissue using PKC Epsilon antibody (20877-1-AP) at dilution of 1:200 and CoraLite@488-Conjugated AffiniPure Goat Anti-Rabbit IgG(H+L).



IP result of anti-PKC Epsilon(IP:20877-1-AP, 4ug; Detection:20877-1-AP 1:800) with SH-SY5Y cells lysate 1240 ug.



1X10⁶ Jurkat cells were intracellularly stained with 0.4 ug Anti-Human PKC Epsilon (20877-1-AP) and CoraLite@488-Conjugated AffiniPure Goat Anti-Rabbit IgG(H+L) at dilution 1:1000 (red), or 0.4 ug Control Antibody. Cells were fixed with 4% PFA and permeabilized with Flow Cytometry Perm Buffer (PF00011-C).