

À des fins de recherche uniquement

Anticorps Polyclonal de lapin anti-TPH1



Numéro de catalogue: 20879-1-AP

Informations de base

Numéro de catalogue:

20879-1-AP

Taille:

150ul, Concentration: 327 µg/ml by Bradford method using BSA as the standard;

Hôte:

Lapin

Isotype:

IgG

Immunogen Catalog Number:

AG14978

Numéro d'acquisition GenBank:

BC106739

Identification du gène (NCBI):

7166

Nom complet:

tryptophan hydroxylase 1

MW calculé

466 aa, 53 kDa

MW observés:

51 kDa

Méthode de purification:

Purification par affinité contre l'antigène

Dilutions recommandées:

WB 1:200-1:1000

Applications

Applications testées:

WB, ELISA

Spécificité de l'espèce:

Humain, souris

Contrôles positifs:

WB: cellules SH-SY5Y,

Informations générales

Tryptophan hydroxylase 1 (TPH1) catalyzes the rate-limiting step in the synthesis of serotonin in the periphery. Recently, it has been shown that expression of the tryptophan hydroxylase 1 gene is increased in lungs and pulmonary endothelial cells from patients with idiopathic pulmonary arterial hypertension. It catalyzes the bipterin-dependent monooxygenation of tryptophan to 5-hydroxytryptophan (5HT), which is subsequently decarboxylated to form the neurotransmitter serotonin. The protein has low expression.

Stockage

Stockage:

Stocker à -20°C. Stable pendant un an après l'expédition.

Tampon de stockage:

PBS avec azoture de sodium à 0,02 % et glycérol à 50 % pH 7,3

L'aliquotage n'est pas nécessaire pour le stockage à -20C

*** Les 20ul contiennent 0,1% de BSA.

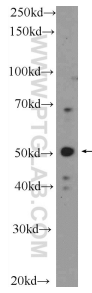
For technical support and original validation data for this product please contact:

T: 1 (888) 4PTGLAB (1-888-478-4522) (toll free in USA), or 1(312) 455-8498 (outside USA)

E: proteintech@ptglab.com
W: ptglab.com

This product is exclusively available under Proteintech Group brand and is not available to purchase from any other manufacturer.

Données de validation sélectionnées



SH-SY5Y cells were subjected to SDS PAGE followed by western blot with 20879-1-AP (TPH1 Antibody) at dilution of 1:300 incubated at room temperature for 1.5 hours.