

À des fins de recherche uniquement

Anticorps Polyclonal de lapin anti-CUL4B



Numéro de catalogue: 20882-1-AP

Phare

3 Publications

Informations de base

Numéro de catalogue:

20882-1-AP

Taille:

150ul, Concentration: 500 µg/ml by Nanodrop and 327 µg/ml by Bradford method using BSA as the standard;

Hôte:

Lapin

Isotype:

IgG

Immunogen Catalog Number:

AG15024

Numéro d'acquisition GenBank:

BC036216

Identification du gène (NCBI):

8450

Nom complet:

cullin 4B

MW calculé

913 aa, 104 kDa

MW observés:

102 kDa

Méthode de purification:

Purification par affinité contre l'antigène

Dilutions recommandées:

WB 1:500-1:3000

IP 0.5-4.0 ug for IP and 1:500-1:1000 for WB

IHC 1:50-1:500

IF 1:50-1:500

Applications

Applications testées:

IF, IHC, IP, WB, ELISA

Demandes citées:

IF, IP

Spécificité de l'espèce:

Humain, rat, souris

Espèces citées:

souris

Remarque-IHC: il est suggéré de démasquer l'antigène avec un tampon de TE buffer pH 9,0; (*) A défaut, le démasquage de l'antigène peut être effectué avec un tampon citrate pH 6,0.

Contrôles positifs:

WB : tissu de thymus de souris, cellules HeLa, cellules Jurkat, cellules SH-SY5Y, cellules Y79, tissu de thymus de rat

IP : tissu cérébral de souris,

IHC : tissu d'amygdalite humaine, tissu de gliome humain

IF : cellules HeLa, cellules HepG2

Informations générales

Cullin-RING ligases (CRLs) complexes participate in the regulation of diverse cellular processes, including cell cycle progression, transcription, signal transduction and development (PMID: 21816341)(PMID: 21554755). Serving as the scaffold protein, cullins are crucial for the assembly of ligase complexes, which recognize and target various substrates for proteasomal degradation. Two cullin 4 (CUL4) proteins, CUL4A (87 kDa) and CUL4B(104 kDa), are two members in cullin family with 83% of identity. Mutations in human CUL4B are one of the major causes of X-linked mental retardation. Cul4b knockout mice demonstrated that CUL4B is indispensable for embryonic development in the mouse (PMID: 22606329). Proteintech's CUL4B antibody 20882-1-AP can specifically recognize CUL4B.

Publications notables

Autrice	Pubmed ID	Journal	Application
Yan Yin	34685710	Cells	IF
Gonca Bayraktar	32726795	Neuropsychopharmacology	IP
Nianyin Lv	35069527	Front Immunol	IP

Stockage

Stockage:

Stocker à -20°C. Stable pendant un an après l'expédition.

Tampon de stockage:

PBS avec azoture de sodium à 0,02 % et glycérol à 50 % pH 7,3

L'aliquotage n'est pas nécessaire pour le stockage à -20C

*** Les 20ul contiennent 0,1% de BSA.

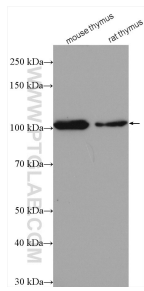
For technical support and original validation data for this product please contact:

T: 1 (888) 4PTGLAB (1-888-478-4522) (toll free in USA), or 1(312) 455-8498 (outside USA)

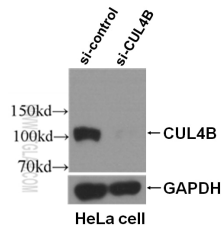
E: proteintech@ptglab.com
W: ptglab.com

This product is exclusively available under Proteintech Group brand and is not available to purchase from any other manufacturer.

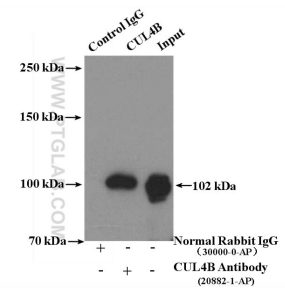
Données de validation sélectionnées



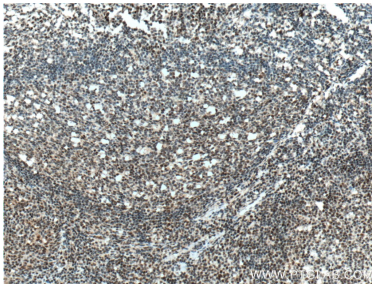
Various lysates were subjected to SDS PAGE followed by western blot with 20882-1-AP (CUL4B antibody) at dilution of 1:1500 incubated at room temperature for 1.5 hours.



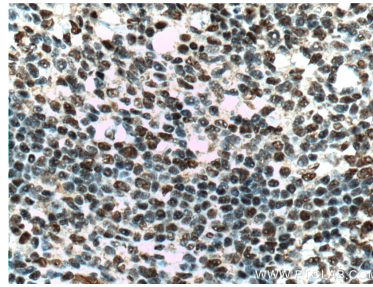
WB result of CUL4B antibody (20882-1-AP, 1:500) with si-Control and si-CUL4B transfected HeLa cells.



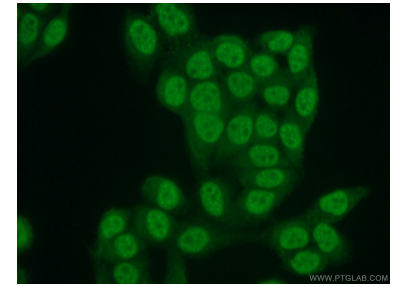
IP Result of anti-CUL4B (IP:20882-1-AP, 4ug; Detection:20882-1-AP 1:300) with mouse brain tissue lysate 4000ug.



Immunohistochemical analysis of paraffin-embedded human tonsillitis tissue slide using 20882-1-AP (CUL4B Antibody) at dilution of 1:200 (under 10x lens). Heat mediated antigen retrieval with Tris-EDTA buffer (pH 9.0).



Immunohistochemical analysis of paraffin-embedded human tonsillitis tissue slide using 20882-1-AP (CUL4B Antibody) at dilution of 1:200 (under 40x lens). Heat mediated antigen retrieval with Tris-EDTA buffer (pH 9.0).



Immunofluorescent analysis of (4% PFA) fixed HeLa cells using 20882-1-AP (CUL4B antibody) at dilution of 1:50 and Alexa Fluor 488-conjugated AffiniPure Goat Anti-Rabbit IgG(H+L).