

À des fins de recherche uniquement

# Anticorps Polyclonal de lapin anti-Caldesmon



Numéro de catalogue: 20887-1-AP

Phare

6 Publications

## Informations de base

Numéro de catalogue:

20887-1-AP

Taille:

150ul, Concentration: 550 µg/ml by Nanodrop and 333 µg/ml by Bradford method using BSA as the standard;

Hôte:

Lapin

Isotype:

IgG

Immunogen Catalog Number:

AG13676

Numéro d'acquisition GenBank:

BC040354

Identification du gène (NCBI):

800

Nom complet:

caldesmon 1

MW calculé

538 aa, 63 kDa

MW observés:

70-80 kDa

Méthode de purification:

Purification par affinité contre l'antigène

Dilutions recommandées:

WB 1:5000-1:50000

IHC 1:1000-1:4000

IF 1:50-1:500

## Applications

Applications testées:

FC, IF, IHC, WB, ELISA

Demandes citées:

IF, IHC, WB

Spécificité de l'espèce:

Humain, souris

Espèces citées:

Humain, souris

**Remarque-IHC: il est suggéré de démasquer l'antigène avec un tampon de TE buffer pH 9,0; (\*) A défaut, 'le démasquage de l'antigène peut être effectué avec un tampon citrate pH 6,0.**

Contrôles positifs:

WB : cellules A2780, cellules HeLa, cellules HT-1080, cellules MDA-MB-231, cellules PC-3, cellules SKOV-3

IHC : tissu de côlon humain, tissu cardiaque de souris

IF : tissu cardiaque de souris, cellules HeLa

## Informations générales

Caldesmon (CALD1), a protein found in the cytoskeleton, plays an important role in proliferation, apoptosis, cell motility, adhesion, receptor function, and second messenger pathways. Caldesmon is a substrate of cdc2 kinase and Erk1/2 MAPK, and phosphorylation by either of these kinases reverses the inhibitory effects of caldesmon. Caldesmon(CALD1) is a prognostic biomarker and correlated with bladder cancer(PMID: 34733993) and immune infiltrates in gastric cancers(PMID: 34189308).

## Publications notables

Autrice	Pubmed ID	Journal	Application
Jiakang Zhang	36230524	Cancers (Basel)	WB
Dongli Liang	28252009	Sci Rep	WB
Iddrisu B Yabasin	30108509	Front Physiol	WB,IF

## Stockage

Stockage:

Stocker à -20°C. Stable pendant un an après l'expédition.

Tampon de stockage:

PBS avec azoture de sodium à 0,02 % et glycérol à 50 % pH 7,3

L'aliquotage n'est pas nécessaire pour le stockage à -20C

\*\*\* Les 20ul contiennent 0,1% de BSA.

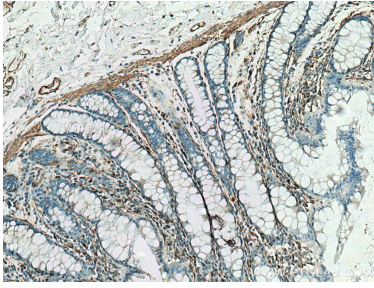
For technical support and original validation data for this product please contact:

T: 1 (888) 4PTGLAB (1-888-478-4522) (toll free in USA), or 1(312) 455-8498 (outside USA)

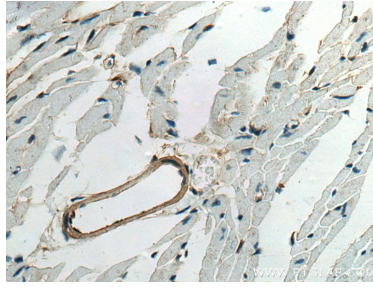
E: proteintech@ptglab.com  
W: ptglab.com

This product is exclusively available under Proteintech Group brand and is not available to purchase from any other manufacturer.

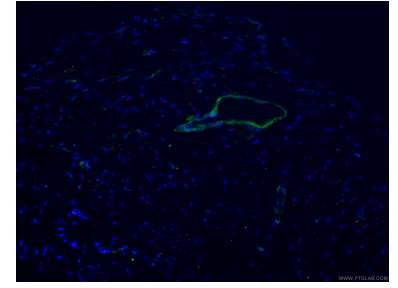
## Données de validation sélectionnées



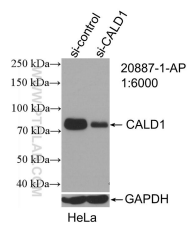
Immunohistochemical analysis of paraffin-embedded human colon tissue slide using 20887-1-AP (Caldesmon antibody) at dilution of 1:2000 (under 10x lens). Heat mediated antigen retrieval with Tris-EDTA buffer (pH 9.0).



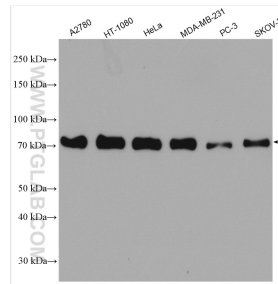
Immunohistochemical analysis of paraffin-embedded mouse heart tissue slide using 20887-1-AP (Caldesmon antibody) at dilution of 1:2000 (under 40x lens). Heat mediated antigen retrieval with Tris-EDTA buffer (pH 9.0).



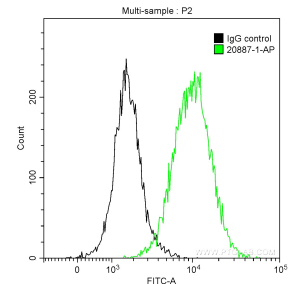
Immunofluorescent analysis of (4% PFA) fixed mouse heart tissue using 20887-1-AP (Caldesmon antibody), at dilution of 1:100 and CoraLite® 488-Conjugated AffiniPure Goat Anti-Rabbit IgG(H+L).



WB result of Caldesmon antibody (20887-1-AP; 1:6000); incubated at room temperature for 1.5 hours with sh-Control and sh-Caldesmon transfected HeLa cells.



Various lysates were subjected to SDS PAGE followed by western blot with 20887-1-AP (Caldesmon antibody) at dilution of 1:10000 incubated at room temperature for 1.5 hours.



$1 \times 10^6$  HeLa cells were intracellularly stained with 0.2  $\mu$ g Anti-Human Caldesmon (20887-1-AP) and CoraLite® 488-Conjugated AffiniPure Goat Anti-Rabbit IgG(H+L) at dilution 1:1000 (green), and 0.2  $\mu$ g Control Antibody. Cells were fixed with 90% MeOH.