

À des fins de recherche uniquement

Anticorps Polyclonal de lapin anti-BRAF



Numéro de catalogue: 20899-1-AP

13 Publications

Informations de base

Numéro de catalogue: 20899-1-AP	Numéro d'acquisition GenBank: BC101757	Méthode de purification: Purification par affinité contre l'antigène
Taille: 150ul , Concentration: 450 µg/ml by Nanodrop;	Identification du gène (NCBI): 673	Dilutions recommandées: WB 1:1000-1:4000 IHC 1:100-1:400 IF 1:50-1:500
Hôte: Lapin	Nom complet: v-raf murine sarcoma viral oncogene homolog B1	
Isotype: IgG	MW calculé 766 aa, 84 kDa	
Immunogen Catalog Number: AG15014	MW observés: 65-70 kDa	

Applications

Applications testées:

IF, IHC, WB, ELISA

Demandes citées:

IHC, WB

Spécificité de l'espèce:

Humain, souris

Espèces citées:

Humain, poulet, souris

Contrôles positifs:

WB : cellules HT-29, cellules HEK-293, cellules HeLa, cellules Jurkat, cellules K-562, cellules NIH/3T3

IHC : tissu de mélanome malin humain, tissu de cancer de la thyroïde humaine, tissu testiculaire humaine

IF : cellules NIH/3T3, cellules HeLa

Remarque-IHC: il est suggéré de démasquer l'antigène avec un tampon de TE buffer pH 9,0; (*) À défaut, 'le démasquage de l'antigène peut être 'effectué avec un tampon citrate pH 6,0.

Informations générales

B-Raf proto-oncogene serine/threonine kinase (BRAF), is a protein belonging to the raf/mil family of serine/threonine protein kinases. BRAF plays a role in regulating the MAP kinase/ERKs signaling pathway, which affects cell division, differentiation, and secretion. BRAF is associated with cardiofaciocutaneous syndrome, a disease characterized by heart defects, mental retardation and a distinctive facial appearance. BRAF is also associated with various cancers, including non-Hodgkin lymphoma, colorectal cancer, malignant melanoma, thyroid carcinoma, non-small cell lung carcinoma, and adenocarcinoma of lung. BRAF plays a role in the PD-1/PDL-1 pathway. In some cancers, BRAF is activated by rearrangements that fuse its kinase domain to 5' partner genes and then has different molecular weights (PMID: 23890088). BRAF has several isoforms, the calculated molecular weight of BRAF is 84 kDa, but the observed molecular weight is about 65 kDa (isoform).

Publications notables

Autrice	Pubmed ID	Journal	Application
Xiaoyan Wang	32900481	Biochem Biophys Res Commun	WB
Serdar Karakurt	33110363	Turk J Biol	WB
Zhaoyu Yang	32463597	Thorac Cancer	WB

Stockage

Stockage:

Stocker à -20°C. Stable pendant un an après l'expédition.

Tampon de stockage:

PBS avec azoture de sodium à 0,02 % et glycérol à 50 % pH 7,3

L'aliquotage n'est pas nécessaire pour le stockage à -20C

*** Les 20ul contiennent 0,1% de BSA.

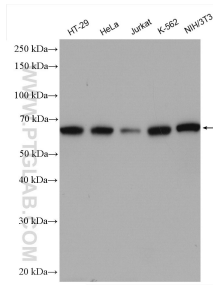
For technical support and original validation data for this product please contact:

T: 1 (888) 4PTGLAB (1-888-478-4522) (toll free in USA), or 1(312) 455-8498 (outside USA)

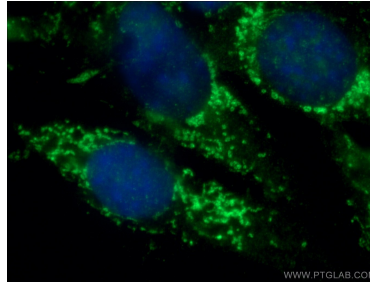
E: proteintech@ptglab.com
W: ptglab.com

This product is exclusively available under Proteintech Group brand and is not available to purchase from any other manufacturer.

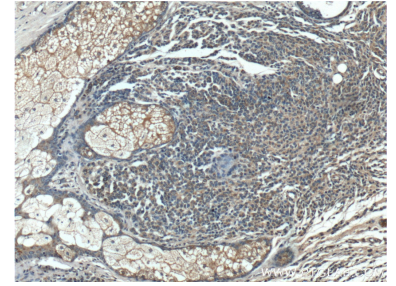
Données de validation sélectionnées



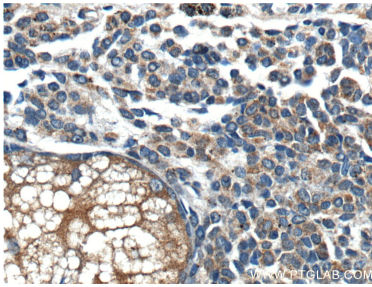
Various lysates were subjected to SDS PAGE followed by western blot with 20899-1-AP (BRAF antibody) at dilution of 1:2000 incubated at room temperature for 1.5 hours.



Immunofluorescent analysis of (-20°C Ethanol) fixed NIH/3T3 cells using 20899-1-AP (BRAF antibody) at dilution of 1:50 and Alexa Fluor 488-conjugated AffiniPure Goat Anti-Rabbit IgG(H+L).



Immunohistochemical analysis of paraffin-embedded human malignant melanoma tissue slide using 20899-1-AP (BRAF Antibody) at dilution of 1:200 (under 10x lens).



Immunohistochemical analysis of paraffin-embedded human malignant melanoma tissue slide using 20899-1-AP (BRAF Antibody) at dilution of 1:200 (under 40x lens).