

À des fins de recherche uniquement

Anticorps Polyclonal de lapin anti-ITCH



Numéro de catalogue: 20920-1-AP

Phare

11 Publications

Informations de base

Numéro de catalogue:

20920-1-AP

Taille:

150ul, Concentration: 300 µg/ml by Nanodrop and 233 µg/ml by Bradford method using BSA as the standard;

Hôte:

Lapin

Isotype:

IgG

Immunogen Catalog Number:

AG15120

Numéro d'acquisition GenBank:

BC011571

Identification du gène (NCBI):

83737

Nom complet:

itchy E3 ubiquitin protein ligase homolog (mouse)

MW calculé

903 aa, 103 kDa

MW observés:

103 kDa, 70 kDa

Méthode de purification:

Purification par affinité contre l'antigène

Dilutions recommandées:

WB 1:1000-1:4000

IP 0.5-4.0 ug for IP and 1:200-1:1000 for WB

IHC 1:50-1:500

Applications

Applications testées:

IHC, IP, WB, ELISA

Demandes citées:

CoIP, IHC, IP, WB

Spécificité de l'espèce:

Humain, souris

Espèces citées:

Humain, rat, souris

Remarque-IHC: il est suggéré de démasquer l'antigène avec un tampon de TE buffer pH 9,0; (*) A défaut, 'le démasquage de l'antigène peut être 'effectué avec un tampon citrate pH 6,0.

Contrôles positifs:

WB : cellules HEK-293, cellules HeLa, cellules K-562, cellules NIH/3T3, cellules Raji, cellules U-251

IP : cellules HEK-293, cellules HeLa

IHC : tissu de cancer du sein humain,

Informations générales

ITCH is an essential component of a ubiquitin-editing protein complex, comprising also TNFAIP3, TAX1BP1 and RNF11, that ensures the transient nature of inflammatory signaling pathways. It is involved in the regulation of apoptosis and reactive oxygen species levels through the ubiquitination and proteasomal degradation of TXNIP. ITCH can be cleaved by caspase-3, -6, and -7 on residue Asp240 and form a 65 kDa cleaved form (PMID: 19541840).

Publications notables

Autrice	Pubmed ID	Journal	Application
Qian Yun Ge	34841685	Clin Transl Med	WB,IP
Xiaodong Zhang	36258021	Oncogene	WB
Yuhong Zhang	34628513	J Mol Med (Berl)	WB

Stockage

Stockage:

Stocker à -20°C. Stable pendant un an après l'expédition.

Tampon de stockage:

PBS avec azoture de sodium à 0,02 % et glycérol à 50 % pH 7,3

L'aliquotage n'est pas nécessaire pour le stockage à -20C

*** Les 20ul contiennent 0,1% de BSA.

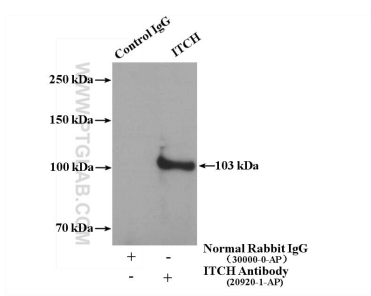
For technical support and original validation data for this product please contact:

T: 1 (888) 4PTGLAB (1-888-478-4522) (toll free in USA), or 1(312) 455-8498 (outside USA)

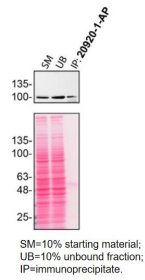
E: proteintech@ptglab.com
W: ptglab.com

This product is exclusively available under Proteintech Group brand and is not available to purchase from any other manufacturer.

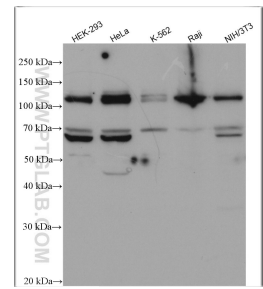
Données de validation sélectionnées



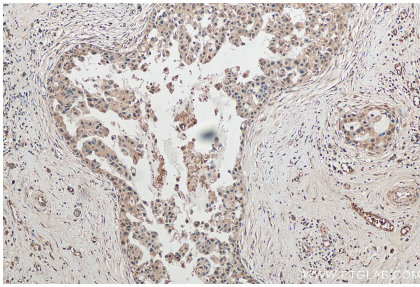
IP result of anti-ITCH (IP:20920-1-AP, 4ug; Detection:20920-1-AP 1:300) with HEK-293 cells lysate 2400 ug.



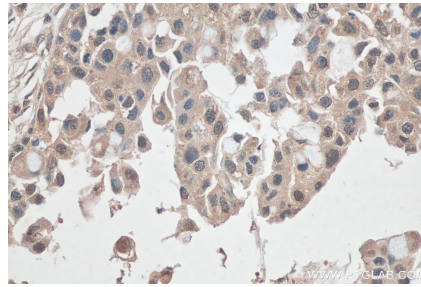
HeLa lysates prepared and IP of ITCH performed using 2.0 µg of 20920-1-AP coupled to protein A-Sepharose beads. The Ponceau stained transfers of each blot are shown. Data provided by YCharOS, an open science company with a mission to validate commercial antibodies to improve scientific reproducibility and transparency.



Various lysates were subjected to SDS PAGE followed by western blot with 20920-1-AP (ITCH antibody) at dilution of 1:2000 incubated at room temperature for 1.5 hours.



Immunohistochemical analysis of paraffin-embedded human breast cancer tissue slide using 20920-1-AP (ITCH antibody) at dilution of 1:200 (under 10x lens). Heat mediated antigen retrieval with Tris-EDTA buffer (pH 9.0).



Immunohistochemical analysis of paraffin-embedded human breast cancer tissue slide using 20920-1-AP (ITCH antibody) at dilution of 1:200 (under 40x lens). Heat mediated antigen retrieval with Tris-EDTA buffer (pH 9.0).