

À des fins de recherche uniquement

Anticorps Polyclonal de lapin anti-HIF-1 alpha



Numéro de catalogue: 20960-1-AP

Phare

459 Publications

Informations de base

Numéro de catalogue:

20960-1-AP

Taille:

150ul, Concentration: 600 µg/ml by Nanodrop;

Hôte:

Lapin

Isotype:

IgG

Immunogen Catalog Number:

AG15198

Numéro d'acquisition GenBank:

BC012527

Identification du gène (NCBI):

3091

Nom complet:

hypoxia inducible factor 1, alpha subunit (basic helix-loop-helix transcription factor)

MW calculé

826 aa, 93 kDa

MW observés:

120 kDa

Méthode de purification:

Purification par affinité contre l'antigène

Dilutions recommandées:

WB 1:2000-1:12000

IP 0.5-4.0 ug for IP and 1:200-1:1000 for WB

IHC 1:50-1:500

IF 1:50-1:500

Applications

Applications testées:

FC, IF, IHC, IP, WB, ELISA

Demandes citées:

ChIP, CoIP, IF, IHC, IP, WB

Spécificité de l'espèce:

Humain

Espèces citées:

Humain, porc, poulet

Remarque-IHC: il est suggéré de démasquer l'antigène avec un tampon de TE buffer pH 9,0; (*) A défaut, le démasquage de l'antigène peut être effectué avec un tampon citrate pH 6,0.

Contrôles positifs:

WB : cellules HeLa traitées au chlorure de cobalt, cellules HeLa

IP : cellules HeLa,

IHC : tissu de cancer de la thyroïde humaine, tissu cardiaque humain, tissu rénal humain

IF : cellules HepG2 traitées au chlorure de cobalt, cellules HeLa traitées au chlorure de cobalt

Informations générales

HIF1a, the major regulator of the cellular responses to hypoxia, consists of an oxygen-sensitive subunit, HIF1 alpha (HIF1A), and an oxygen-insensitive subunit, HIF1 beta (arylhydrocarbon receptor nuclear transporter [ARNT]). Under normal oxygen conditions, HIF1a is continuously produced and destroyed, in a process involving hydroxylation, interaction with von Hippel-Lindau (VHL) protein, polyubiquitylation and subsequent proteasomal degradation. Under hypoxic conditions, hydroxylation is impaired and HIF1a is stabilized. HIF1a localizes in cytoplasm in normoxia, but it can translocate into nuclear in response to hypoxia. The calculated molecular weight of HIF1a is 93 kDa, but the modified protein HIF1a is about 110-120kDa (PMID: 11698256, PMID: 7539918).

Publications notables

Autrice	Pubmed ID	Journal	Application
Menghui Xu	36290677	Antioxidants (Basel)	WB
Di Cui	34586717	Adv Healthc Mater	WB,IHC
Wenmin Yu	34676302	Open Med (Wars)	IHC

Stockage

Stockage:

Stocker à -20°C. Stable pendant un an après l'expédition.

Tampon de stockage:

PBS avec azoture de sodium à 0,02 % et glycérol à 50 % pH 7,3

L'aliquotage n'est pas nécessaire pour le stockage à -20C

*** Les 20ul contiennent 0,1% de BSA.

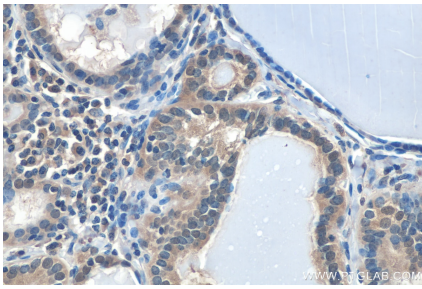
For technical support and original validation data for this product please contact:

T: 1 (888) 4PTGLAB (1-888-478-4522) (toll free in USA), or 1(312) 455-8498 (outside USA)

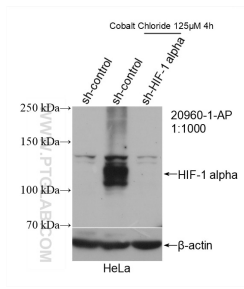
E: proteintech@ptglab.com
W: ptglab.com

This product is exclusively available under Proteintech Group brand and is not available to purchase from any other manufacturer.

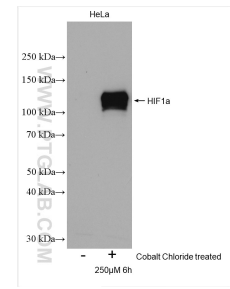
Données de validation sélectionnées



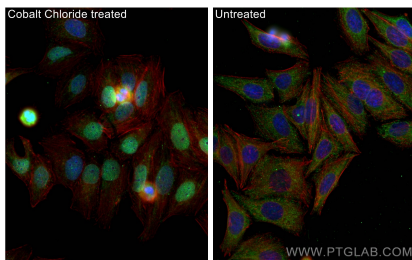
Immunohistochemical analysis of paraffin-embedded human thyroid cancer tissue slide using 20960-1-AP (HIF1a antibody) at dilution of 1:200 (under 40x lens). Heat mediated antigen retrieval with Tris-EDTA buffer (pH 9.0).



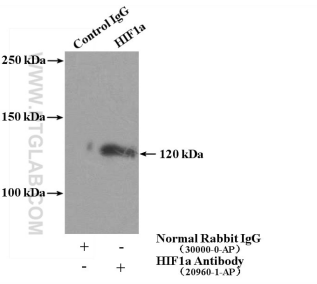
WB result of HIF-1 alpha antibody (20960-1-AP; 1:1000); incubated at room temperature for 1.5 hours) with sh-Control and sh-HIF-1 alpha transfected HeLa cells. Sample 1: non-treated sh-Control transfected HeLa cells, Sample 2: Cobalt Chloride treated sh-Control transfected HeLa cells, Sample 3: Cobalt Chloride treated sh-HIF-1 alpha transfected HeLa cells.



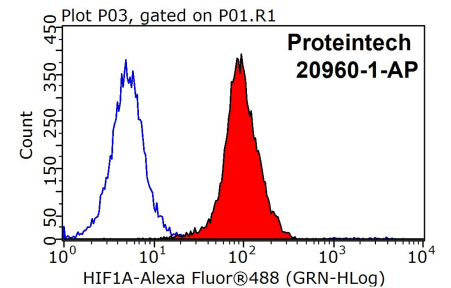
Untreated and Cobalt Chloride treated HeLa cells were subjected to SDS PAGE followed by western blot with 20960-1-AP (HIF1a antibody) at dilution of 1:6000 incubated at room temperature for 1.5 hours.



Immunofluorescent analysis of (-20°C Ethanol) fixed Cobalt Chloride treated HepG2 cells using HIF1a antibody (20960-1-AP) at dilution of 1:200 and CoraLite@488-Conjugated AffiniPure Goat Anti-Rabbit IgG(H+L), CL594-Phalloidin (red).



IP Result of anti-HIF1a (IP:20960-1-AP, 4µg; Detection:20960-1-AP 1:300) with HeLa cells lysate 4000µg.



1X10⁶ HeLa cells were stained with 0.2µg HIF1a antibody (20960-1-AP, red) and control antibody (blue). Fixed with 90% MeOH blocked with 3% BSA (30 min). Alexa Fluor 488-conjugated AffiniPure Goat Anti-Rabbit IgG(H+L) with dilution 1:1000.