

À des fins de recherche uniquement

Anticorps Polyclonal de lapin anti-PYCR1-specific



Numéro de catalogue: 20962-1-AP

2 Publications

Informations de base

Numéro de catalogue:

20962-1-AP

Taille:

150ul, Concentration: 600 µg/ml by Nanodrop and 313 µg/ml by Bradford method using BSA as the standard;

Hôte:

Lapin

Isotype:

IgG

Numéro d'acquisition GenBank:

NM_006907

Identification du gène (NCBI):

5831

Nom complet:

pyrroline-5-carboxylate reductase 1

MW calculé

33 kDa

MW observés:

34 kDa

Méthode de purification:

Purification par affinité contre l'antigène

Dilutions recommandées:

WB 1:500-1:2000

IP 0.5-4.0 ug for IP and 1:500-1:1000 for WB

IHC 1:20-1:200

Applications

Applications testées:

IHC, IP, WB, ELISA

Demandes citées:

WB

Spécificité de l'espèce:

Humain, souris

Espèces citées:

Humain, souris

Contrôles positifs:

WB : cellules Raji, tissu cérébral humain

IP : cellules Raji,

IHC : tissu de cancer du côlon humain,

Remarque-IHC: il est suggéré de démasquer l'antigène avec un tampon de TE buffer pH 9,0; (*) À défaut, le démasquage de l'antigène peut être effectué avec un tampon citrate pH 6,0.

Informations générales

PYCR1, also named as P5CR1, belongs to the pyrroline-5-carboxylate reductase family. It is a housekeeping enzyme that catalyzes the last step in proline biosynthesis. PYCR1 can utilize both NAD and NADP, but has higher affinity for NAD. It is involved in the cellular response to oxidative stress. Mutation in PYCR1 will cause ARCL type II (ARCL2B). Some mutation will cause DeBary syndrome (DBS) which is characterized by progeroid features, ophthalmological abnormalities, intrauterine growth retardation, and cutis laxa. The MW of PYCR1 is about 33-35kd. This antibody is specific to PYCR1.

Publications notables

Autrice	Pubmed ID	Journal	Application
Simon Schwörer	32134147	EMBO J	WB
Nneka Southwell	37222423	EMBO Mol Med	WB

Stockage

Stockage:

Stocker à -20°C. Stable pendant un an après l'expédition.

Tampon de stockage:

PBS avec azoture de sodium à 0,02 % et glycérol à 50 % pH 7,3

L'aliquotage n'est pas nécessaire pour le stockage à -20C

*** Les 20ul contiennent 0,1% de BSA.

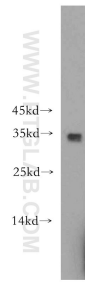
For technical support and original validation data for this product please contact:

T: 1 (888) 4PTGLAB (1-888-478-4522) (toll free in USA), or 1(312) 455-8498 (outside USA)

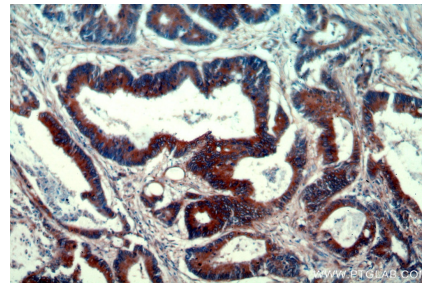
E: proteintech@ptglab.com
W: ptglab.com

This product is exclusively available under Proteintech Group brand and is not available to purchase from any other manufacturer.

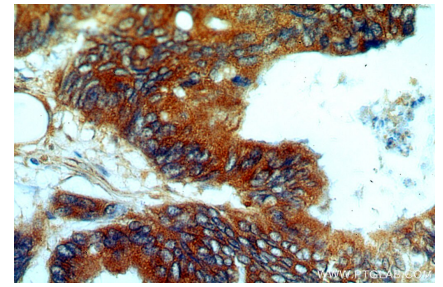
Données de validation sélectionnées



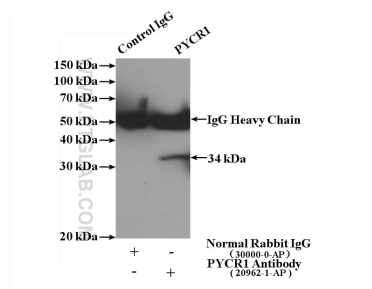
Raji cells were subjected to SDS PAGE followed by western blot with 20962-1-AP (PYCR1 antibody) at dilution of 1:500 incubated at room temperature for 1.5 hours.



Immunohistochemical analysis of paraffin-embedded human colon cancer using 20962-1-AP (PYCR1 antibody) at dilution of 1:50 (under 10x lens).



Immunohistochemical analysis of paraffin-embedded human colon cancer using 20962-1-AP (PYCR1 antibody) at dilution of 1:50 (under 40x lens).



IP Result of anti-PYCR1 (IP:20962-1-AP, 4ug;
Detection:20962-1-AP 1:500) with Raji cells lysate 1440ug.