

À des fins de recherche uniquement

Anticorps Polyclonal de lapin anti-EDNRB



Numéro de catalogue: 20964-1-AP

5 Publications

Informations de base

Numéro de catalogue:

20964-1-AP

Taille:

150ul, Concentration: 800 µg/ml by Nanodrop;

Hôte:

Lapin

Isotype:

IgG

Numéro d'acquisition GenBank:

NM_000115

Identification du gène (NCBI):

1910

Nom complet:

endothelin receptor type B

MW calculé

50 kDa

MW observés:

53 kDa

Méthode de purification:

Purification par affinité contre l'antigène

Dilutions recommandées:

WB 1:500-1:1000

IHC 1:20-1:200

Applications

Applications testées:

FC, IHC, WB, ELISA

Demandes citées:

FC, IF, WB

Spécificité de l'espèce:

Humain, souris

Espèces citées:

Humain, souris

Contrôles positifs:

WB : cellules HEK-293, tissu placentaire de souris, tissu placentaire humain

IHC : tissu placentaire humain,

Remarque-IHC: il est suggéré de démasquer l'antigène avec un tampon de TE buffer pH 9,0; (*) À défaut, 'le démasquage de l'antigène peut être 'effectué avec un tampon citrate pH 6,0.

Informations générales

EDNRB (endothelin receptor type B) is a G-protein coupled heptahelical endothelin-1 (EDN1) receptor. EDN1, a known mediator of human myometrial contraction in vitro, belongs to a family of three 21-amino acid isopeptides (PMID:18497345). EDNRB is a 442-residue protein expressed post-natally in many tissues, particularly in the myenteric plexus, mucosal layer, ganglia, and blood vessels of the submucosa of the colon (PMID:11434563). Moreover, Both the EDNRA and EDNRB are expressed in vessels and can be bound by EDN1, but while EDNRA mediates a constrictive effect, EDNRB is involved in vasorelaxation and functions as a clearance receptor that scavenges circulating EDN1 (PMID:30171849).

Publications notables

Autrice	Pubmed ID	Journal	Application
Xuhong Zhang	36418970	BMC Ophthalmol	WB
Juliano T Freitas	34288510	Pigment Cell Melanoma Res	IF,FC
Zhong-San Zeng	30663067	J Pharm Pharmacol	WB

Stockage

Stockage:

Stocker à -20°C. Stable pendant un an après l'expédition.

Tampon de stockage:

PBS avec azoture de sodium à 0,02 % et glycérol à 50 % pH 7,3

L'aliquotage n'est pas nécessaire pour le stockage à -20C

*** Les 20ul contiennent 0,1% de BSA.

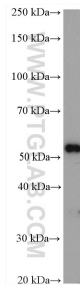
For technical support and original validation data for this product please contact:

T: 1 (888) 4PTGLAB (1-888-478-4522) (toll free in USA), or 1(312) 455-8498 (outside USA)

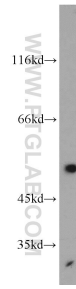
E: proteintech@ptglab.com
W: ptglab.com

This product is exclusively available under Proteintech Group brand and is not available to purchase from any other manufacturer.

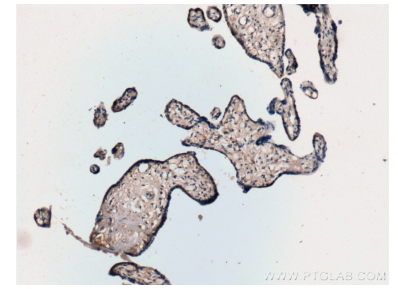
Données de validation sélectionnées



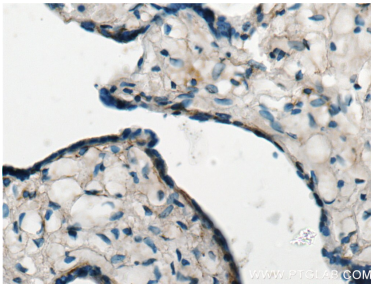
HEK-293 cells were subjected to SDS PAGE followed by western blot with 20964-1-AP (EDNRB antibody) at dilution of 1:500 incubated at room temperature for 1.5 hours.



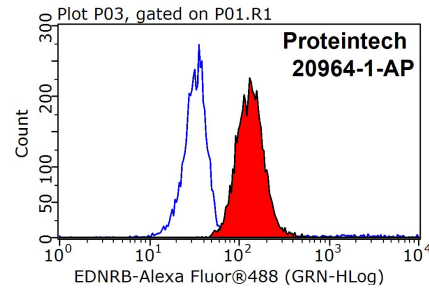
mouse placenta tissue were subjected to SDS PAGE followed by western blot with 20964-1-AP (EDNRB antibody) at dilution of 1:500 incubated at room temperature for 1.5 hours.



Immunohistochemical analysis of paraffin-embedded human placenta tissue slide using 20964-1-AP (EDNRB Antibody) at dilution of 1:50 (under 10x lens).



Immunohistochemical analysis of paraffin-embedded human placenta tissue slide using 20964-1-AP (EDNRB Antibody) at dilution of 1:50 (under 40x lens).



1X10⁶ Raji cells were stained with 0.2ug EDNRB antibody (20964-1-AP, red) and control antibody (blue). Fixed with 90% MeOH blocked with 3% BSA (30 min). Alexa Fluor 488-conjugated AffiniPure Goat Anti-Rabbit IgG(H+L) with dilution 1:1000.