

À des fins de recherche uniquement

# Anticorps Polyclonal de lapin anti-LEPR



Numéro de catalogue: 20966-1-AP

Phare

18 Publications

## Informations de base

Numéro de catalogue:

20966-1-AP

Taille:

150ul, Concentration: 650 µg/ml by Nanodrop;

Hôte:

Lapin

Isotype:

IgG

Numéro d'acquisition GenBank:

NM\_002303

Identification du gène (NCBI):

3953

Nom complet:

leptin receptor

MW calculé

132 kDa

MW observés:

100-150 kDa

Méthode de purification:

Purification par affinité contre l'antigène

Dilutions recommandées:

WB 1:500-1:2000

IP 0.5-4.0 µg for IP and 1:500-1:1000 for WB

IHC 1:50-1:200

IF 1:10-1:100

## Applications

Applications testées:

FC, IF, IHC, IP, WB, ELISA

Demandes citées:

IF, IHC, IP, WB

Spécificité de l'espèce:

Humain, souris

Espèces citées:

Humain, rat, souris

Contrôles positifs:

WB : tissu cardiaque de souris, cellules PC-3

IP : tissu cardiaque de souris,

IHC : tissu d'hyperplasie de la prostate humain, tissu cardiaque humain

IF : cellules MCF-7,

**Remarque-IHC: il est suggéré de démasquer l'antigène avec un tampon de TE buffer pH 9,0; (\*) À défaut, 'le démasquage de l'antigène peut être 'effectué avec un tampon citrate pH 6,0.**

## Informations générales

The hormone leptin, secreted predominantly from adipose tissue, plays a crucial role in the regulation of numerous neuroendocrine functions, from energy homeostasis to reproduction (PMID: 22249808). Leptin acts through the leptin receptor (LEPR, also known as OB-R), a single-transmembrane-domain receptor of the cytokine receptor family. On ligand binding, LEPR mediates signaling through JAK2/STAT3 (PMID: 9102398). LEPR plays an important role in the regulation of glucose homeostasis via feeding and adiposity. Alternatively spliced transcript variants encoding different isoforms of LEPR have been described. This antibody can recognize long (LEPRb) and short (LEPRa,c,d) isoforms. The band at 150 kDa detected by this antibody is larger than the predicted molecular weight, probably due to glycosylation (PMID: 10026237).

## Publications notables

Autrice	Pubmed ID	Journal	Application
Yu Gao	36187750	PeerJ	WB,IHC
Paola Maroni	33213024	Biomedicines	IHC
Shintaro Sukegawa	31717278	Materials (Basel)	IHC

## Stockage

Stockage:

Stocker à -20°C. Stable pendant un an après l'expédition.

Tampon de stockage:

PBS avec azoture de sodium à 0,02 % et glycérol à 50 % pH 7,3

L'aliquotage n'est pas nécessaire pour le stockage à -20C

\*\*\* Les 20ul contiennent 0,1% de BSA.

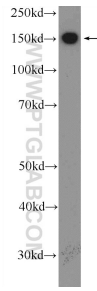
For technical support and original validation data for this product please contact:

T: 1 (888) 4PTGLAB (1-888-478-4522) (toll free in USA), or 1(312) 455-8498 (outside USA)

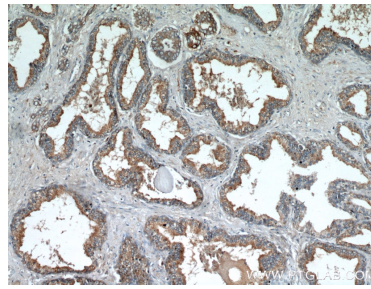
E: proteintech@ptglab.com  
W: ptglab.com

This product is exclusively available under Proteintech Group brand and is not available to purchase from any other manufacturer.

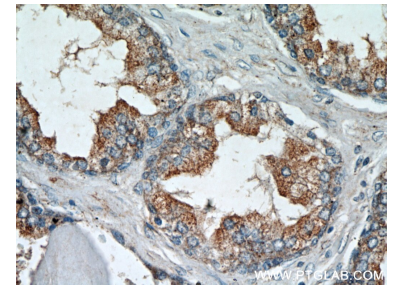
## Données de validation sélectionnées



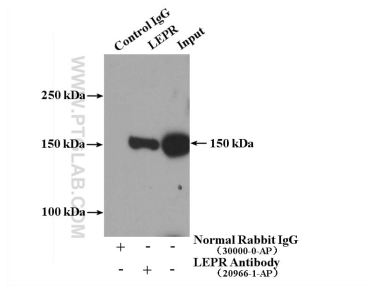
mouse heart tissue were subjected to SDS PAGE followed by western blot with 20966-1-AP (LEPR Antibody) at dilution of 1:1000 incubated at room temperature for 1.5 hours.



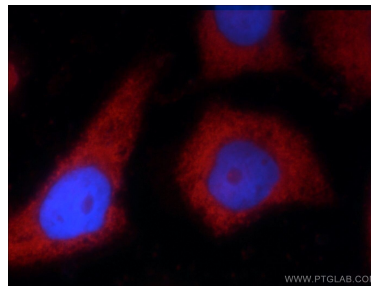
Immunohistochemical analysis of paraffin-embedded human prostate hyperplasia using 20966-1-AP (LEPR antibody) at dilution of 1:50 (under 10x lens).



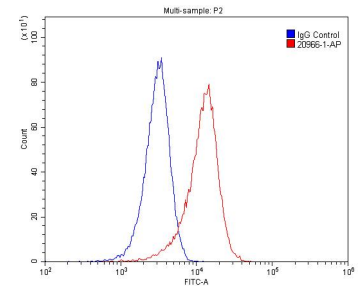
Immunohistochemical analysis of paraffin-embedded human prostate hyperplasia using 20966-1-AP (LEPR antibody) at dilution of 1:50 (under 40x lens).



IP Result of anti-LEPR (IP:20966-1-AP, 5ug; Detection:20966-1-AP 1:700) with mouse heart tissue lysate 4000ug.



Immunofluorescent analysis of MCF-7 cells using 20966-1-AP (LEPR antibody) at dilution of 1:25 and Rhodamine-Goat anti-Rabbit IgG.



1X10<sup>6</sup> HeLa cells were stained with 0.2ug LEPR antibody (20966-1-AP, red) and control antibody (blue). Fixed with 4% PFA blocked with 3% BSA (30 min). Alexa Fluor 488-conjugated AffiniPure Goat Anti-Rabbit IgG(H+L) with dilution 1:1500.