

À des fins de recherche uniquement

# Anticorps Polyclonal de lapin anti-CRHR1



Numéro de catalogue: 20967-1-AP

8 Publications

## Informations de base

<b>Numéro de catalogue:</b> 20967-1-AP	<b>Numéro d'acquisition GenBank:</b> NM_004382	<b>Méthode de purification:</b> Purification par affinité contre l'antigène
<b>Taille:</b> 150ul , Concentration: 500 µg/ml by Nanodrop;	<b>Identification du gène (NCBI):</b> 1394	<b>Dilutions recommandées:</b> WB 1:200-1:1000
<b>Hôte:</b> Lapin	<b>Nom complet:</b> corticotropin releasing hormone receptor 1	
<b>Isotype:</b> IgG	<b>MW calculé:</b> 48 kDa	
	<b>MW observés:</b> 46-55 kDa	

## Applications

<b>Applications testées:</b> WB, ELISA	<b>Contrôles positifs:</b> WB : cellules HeLa, cellules SH-SY5Y
<b>Demandes citées:</b> IF, WB	
<b>Spécificité de l'espèce:</b> Humain	
<b>Espèces citées:</b> Humain	

## Informations générales

Corticotropin-releasing hormone (CRH, also known as Corticotropin-releasing factor, CRF) is a 41 amino acid peptide hormone and a key regulator of the stress response. CRH and the related urocortin peptides (UCN, UCN2 and UCN3) mediate their actions through two mammalian receptor subtypes, CRHR1 and CRHR2 (PMID: 23863939). CRHR1 (also known as CRFR1) exhibits high affinity towards CRH and UCN but low affinity towards UCN2 and no affinity towards UCN3 (PMID: 22684850). The activity of this receptor is mediated by G proteins which activate adenylyl cyclase. Widely distributed throughout the brain, CRHR1 critically controls behavioral adaptation to stress and is causally linked to emotional disorders (PMID: 21885734). Alternative splicing results in multiple transcript variants encoding distinct isoforms of CRHR1. This antibody raised against a synthesized peptide corresponding to amino acid residues 148-165 of isoform CRF-R1 can only recognize isoform CRF-R1.

## Publications notables

Autrice	Pubmed ID	Journal	Application
Shao-Jun Chen	25146699	Proc Natl Acad Sci U S A	IF
Shuai Lian	30423388	Behav Brain Res	WB
Chunyang Zhu	31746413	Int J Mol Med	WB

## Stockage

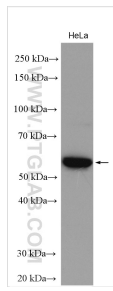
**Stockage:**  
Stocker à -20°C. Stable pendant un an après l'expédition.  
**Tampon de stockage:**  
PBS avec azoture de sodium à 0,02 % et glycérol à 50 % pH 7,3  
L'aliquotage n'est pas nécessaire pour le stockage à -20C

\*\*\* Les 20ul contiennent 0,1% de BSA.

For technical support and original validation data for this product please contact:  
T: 1 (888) 4PTGLAB (1-888-478-4522) (toll free in USA), or 1(312) 455-8498 (outside USA)  
E: [proteintech@ptglab.com](mailto:proteintech@ptglab.com)  
W: [ptglab.com](http://ptglab.com)

This product is exclusively available under Proteintech Group brand and is not available to purchase from any other manufacturer.

## Données de validation sélectionnées



HeLa cells were subjected to SDS PAGE followed by western blot with 20967-1-AP (CRHR1 antibody) at dilution of 1:400 incubated at room temperature for 1.5 hours.