

À des fins de recherche uniquement

Anticorps Polyclonal de lapin anti-BRIP1(C-terminal)



Numéro de catalogue: 20983-1-AP

Informations de base

Numéro de catalogue: 20983-1-AP	Numéro d'acquisition GenBank: NM_032043	Méthode de purification: Purification par affinité contre l'antigène
Taille: 150ul, Concentration: 900 µg/ml by Nanodrop and 727 µg/ml by Bradford method using BSA as the standard;	Identification du gène (NCBI): 83990	Dilutions recommandées: WB 1:500-1:1000 IHC 1:50-1:500 IF 1:10-1:100
Hôte: Lapin	Nom complet: BRCA1 interacting protein C-terminal helicase 1	
Isotype: IgG	MW calculé: 141 kDa	
	MW observés: 140-150 kDa	

Applications

Applications testées:
IF, IHC, WB, ELISA

Spécificité de l'espèce:
Humain

Remarque-IHC: il est suggéré de démasquer l'antigène avec un tampon de TE buffer pH 9,0; (*) À défaut, 'le démasquage de l'antigène peut être effectué avec un tampon citrate pH 6,0.

Contrôles positifs:

WB : cellules HeLa,

IHC : tissu de cancer du sein humain,

IF : cellules HeLa,

Informations générales

BRIP1, also named as BACH1 and FANCI, belongs to the DEAD box helicase family and DEAH subfamily. It is a DNA-dependent ATPase and 5' to 3' DNA helicase required for the maintenance of chromosomal stability. It is involved in the repair of DNA double-strand breaks by homologous recombination in a manner that depends on its association with BRCA1. Defects in BRIP1 are a cause of susceptibility to breast cancer (BC). Defects in BRIP1 are the cause of Fanconi anemia complementation group J (FANCI). The antibody is specific to BRIP1.

Stockage

Stockage:

Stocker à -20°C. Stable pendant un an après l'expédition.

Tampon de stockage:

PBS avec azoture de sodium à 0,02 % et glycérol à 50 % pH 7,3

L'aliquotage n'est pas nécessaire pour le stockage à -20C

***** Les 20ul contiennent 0,1% de BSA.**

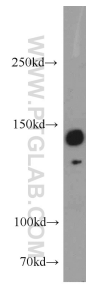
For technical support and original validation data for this product please contact:

T: 1 (888) 4PTGLAB (1-888-478-4522) (toll free in USA), or 1(312) 455-8498 (outside USA)

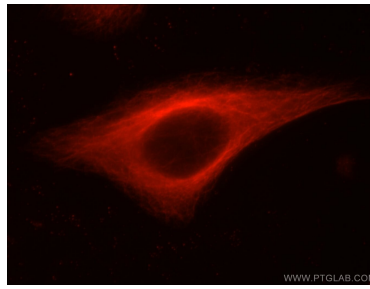
E: proteintech@ptglab.com
W: ptglab.com

This product is exclusively available under Proteintech Group brand and is not available to purchase from any other manufacturer.

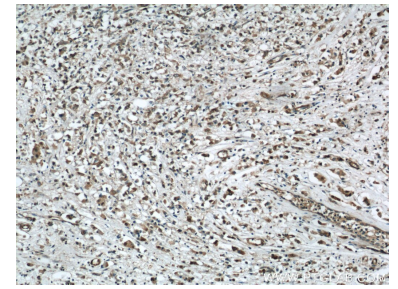
Données de validation sélectionnées



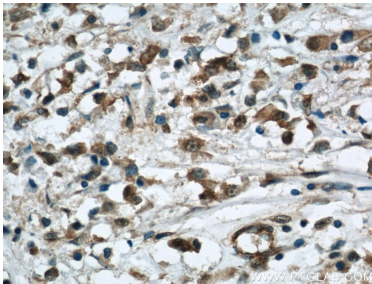
HeLa cells were subjected to SDS PAGE followed by western blot with 20983-1-AP (BRIP1 antibody) at dilution of 1:1000 incubated at room temperature for 1.5 hours.



Immunofluorescent analysis of HeLa cells using 20983-1-AP (BRIP1 antibody) at dilution of 1:25 and Rhodamine-Goat anti-Rabbit IgG.



Immunohistochemical analysis of paraffin-embedded human breast cancer using 20983-1-AP (BRIP1 antibody) at dilution of 1:50 (under 10x lens).



Immunohistochemical analysis of paraffin-embedded human breast cancer using 20983-1-AP (BRIP1 antibody) at dilution of 1:50 (under 40x lens).