

À des fins de recherche uniquement

Anticorps Polyclonal de lapin anti-PDX1



Numéro de catalogue: 20989-1-AP

11 Publications

Informations de base

Numéro de catalogue: 20989-1-AP	Numéro d'acquisition GenBank: NM_000209	Méthode de purification: Purification par affinité contre l'antigène
Taille: 150ul, Concentration: 500 µg/ml by Nanodrop and 267 µg/ml by Bradford method using BSA as the standard;	Identification du gène (NCBI): 3651	Dilutions recommandées: WB 1:500-1:1000
Hôte: Lapin	Nom complet: pancreatic and duodenal homeobox 1	
Isotype: IgG	MW calculé: 31 kDa	
	MW observés: 40-50 kDa	

Applications

Applications testées: WB, ELISA	Contrôles positifs: WB : cellules PC-3, cellules BxPC-3
Demandes citées: IF, IHC, WB	
Spécificité de l'espèce: Humain, souris	
Espèces citées: Humain, rat, souris	

Informations générales

Pancreatic duodenal homeobox-1 protein (PDX-1), also designated INS promoter factor (IPF1), INS upstream factor 1 (IUF1), somatostatin trans-activating factor-1 (STF-1) and glucose-sensitive factor (GSF), is a 282 amino acid homeodomain-containing transcription factor present in pancreatic beta-cells. PDX-1 is a key regulator of pancreatic islet development and INS gene transcription in beta-cells. PDX-1 is expressed in all cells at the early stages of development and is mainly restricted to the pancreas and duodenum in adult. HNF-3b, HNF-1a and SP1 positively regulate the PDX-1 enhancer element. PDX-1 is also regulated by glucagon-like peptide through activation of adenylyl cyclase, which results in an increase in intracellular cAMP activity. The increased levels of cAMP, and the resulting activation of PKA, lead to an increase in PDX-1 transcription and translocation of the protein to the nuclei of beta-cells. PDX-1 binds to the sequence C(C/T) and can heterodimerize with PBX. PDX-1 is phosphorylated by the SAPK2 pathway under high glucose concentrations. Mutations in the PDX-1 gene can cause maturity-onset diabetes of the young and pancreatic agenesis.

Publications notables

Autrice	Pubmed ID	Journal	Application
Nan Zhang	30455626	Front Neurosci	IF
Yanrong Yu	35616388	Biofabrication	IF
Xinlei Yao	32690606	J Biol Chem	WB

Stockage

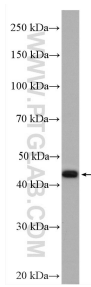
Stockage:
Stocker à -20°C. Stable pendant un an après l'expédition.
Tampon de stockage:
PBS avec azoture de sodium à 0,02 % et glycérol à 50 % pH 7,3
L'aliquotage n'est pas nécessaire pour le stockage à -20C

*** Les 20ul contiennent 0,1% de BSA.

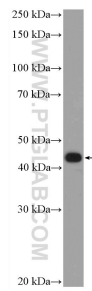
For technical support and original validation data for this product please contact:
T: 1 (888) 4PTGLAB (1-888-478-4522) (toll free in USA), or 1(312) 455-8498 (outside USA)
E: proteintech@ptglab.com
W: ptglab.com

This product is exclusively available under Proteintech Group brand and is not available to purchase from any other manufacturer.

Données de validation sélectionnées



BxPC-3 cells were subjected to SDS PAGE followed by western blot with 20989-1-AP (PDX1 antibody) at dilution of 1:1200 incubated at room temperature for 1.5 hours.



PC-3 cells were subjected to SDS PAGE followed by western blot with 20989-1-AP (PDX1 Antibody) at dilution of 1:600 incubated at room temperature for 1.5 hours.