

À des fins de recherche uniquement

# Anticorps Polyclonal de lapin anti-Cyclin T1



Numéro de catalogue: 20992-1-AP

3 Publications

## Informations de base

Numéro de catalogue:

20992-1-AP

Numéro d'acquisition GenBank:

NM\_001240

Méthode de purification:

Purification par affinité contre l'antigène

Taille:

150ul, Concentration: 400 µg/ml by Nanodrop and 380 µg/ml by Bradford method using BSA as the standard;

Identification du gène (NCBI):

904

Dilutions recommandées:

WB 1:200-1:1000

IF 1:50-1:500

Hôte:

Lapin

Nom complet:

cyclin T1

MW calculé

81 kDa

Isotype:

IgG

MW observés:

87 kDa

## Applications

Applications testées:

IF, WB, ELISA

Demandes citées:

IF, WB

Spécificité de l'espèce:

Humain

Espèces citées:

Humain

Contrôles positifs:

WB : cellules K-562, cellules A431, cellules HeLa, cellules Jurkat, cellules Y79

IF : cellules MCF-7,

## Informations générales

CCNT1, also named as CycT1, belongs to the cyclin family and Cyclin C subfamily. It is a regulatory subunit of the cyclin-dependent kinase pair (CDK9/cyclin-T1) complex which also called positive transcription elongation factor B (P-TEFb). In case of HIV or SIV infections, CCNT1 binds to the transactivation domain of the viral nuclear transcriptional activator, Tat, thereby increasing Tat's affinity for the transactivating response RNA element (TAR RNA). CCNT1 serves as an essential cofactor for Tat, by promoting RNA Pol II activation, allowing transcription of viral genes. The antibody is specific to CCNT1.

## Publications notables

Autrice	Pubmed ID	Journal	Application
Gongwei Wu	28474697	Nat Commun	WB
Sebastian Eilebrecht	24623795	Nucleic Acids Res	WB
Ying E	37291517	BMC Cancer	WB,IF

## Stockage

Stockage:

Stocker à -20°C. Stable pendant un an après l'expédition.

Tampon de stockage:

PBS avec azoture de sodium à 0,02 % et glycérol à 50 % pH 7,3

L'aliquotage n'est pas nécessaire pour le stockage à -20C

\*\*\* Les 20ul contiennent 0,1% de BSA.

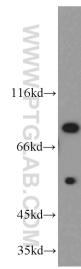
For technical support and original validation data for this product please contact:

T: 1 (888) 4PTGLAB (1-888-478-4522) (toll free in USA), or 1(312) 455-8498 (outside USA)

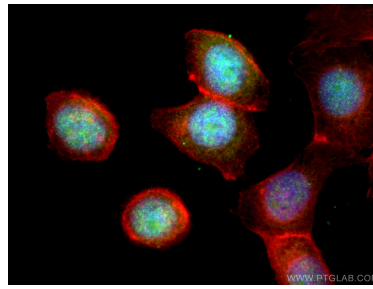
E: [proteintech@ptglab.com](mailto:proteintech@ptglab.com)  
W: [ptglab.com](http://ptglab.com)

This product is exclusively available under Proteintech Group brand and is not available to purchase from any other manufacturer.

## Données de validation sélectionnées



K-562 cells were subjected to SDS PAGE followed by western blot with 20992-1-AP (Cyclin T1 antibody) at dilution of 1:300 incubated at room temperature for 1.5 hours.



Immunofluorescent analysis of (4% PFA) fixed MCF-7 cells using Cyclin T1 antibody (20992-1-AP) at dilution of 1:200 and CoraLite® 488-Conjugated AffiniPure Goat Anti-Rabbit IgG(H+L).