

À des fins de recherche uniquement

# Anticorps Polyclonal de lapin anti-TMEM106B



Numéro de catalogue: 20995-1-AP

Phare

7 Publications

## Informations de base

Numéro de catalogue:

20995-1-AP

Taille:

150ul, Concentration: 700 µg/ml by Nanodrop;

Hôte:

Lapin

Isotype:

IgG

Immunogen Catalog Number:

AG14264

Numéro d'acquisition GenBank:

BC033901

Identification du gène (NCBI):

54664

Nom complet:

transmembrane protein 106B

MW calculé

31 kDa

MW observés:

31-35 kDa, 40-55 kDa

Méthode de purification:

Purification par affinité contre l'antigène

Dilutions recommandées:

WB 1:500-1:2000

## Applications

Applications testées:

WB, ELISA

Demandes citées:

IF, IHC, WB

Spécificité de l'espèce:

Humain, souris

Espèces citées:

Humain, souris

Contrôles positifs:

WB : cellules A549, cellules HeLa, cellules HepG2

## Informations générales

TMEM106B is a genetic risk factor for frontotemporal lobar degeneration with TDP-43 inclusions (FTLD-TDP). Amyotrophic lateral sclerosis (ALS), like FTLD-TDP, is characterized by pathological TDP-43 inclusions. TMEM106B expression in the brain may be linked to mechanisms of disease in FTLD-TDP and risk alleles confer genetic susceptibility by increasing gene expression. TMEM106B can be showed as 31-55 kDa and 70-90 kDa (Glycosylated or Dimer) form in western blot test. (PMID: 27543298, 22895706, PMID: 23136129).

## Publications notables

Autrice	Pubmed ID	Journal	Application
Kui Xiao	34714841	PLoS One	WB
Jun-Ichi Satoh	24684749	Alzheimers Res Ther	WB
Andrew Chang	35247328	Cell	IHC

## Stockage

Stockage:

Stocker à -20°C. Stable pendant un an après l'expédition.

Tampon de stockage:

PBS avec azoture de sodium à 0,02 % et glycérol à 50 % pH 7,3

L'aliquotage n'est pas nécessaire pour le stockage à -20C

\*\*\* Les 20ul contiennent 0,1% de BSA.

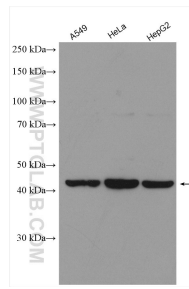
For technical support and original validation data for this product please contact:

T: 1 (888) 4PTGLAB (1-888-478-4522) (toll free in USA), or 1(312) 455-8498 (outside USA)

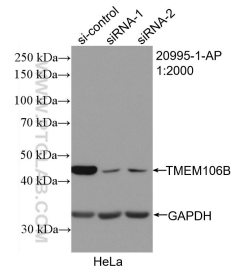
E: proteintech@ptglab.com  
W: ptglab.com

This product is exclusively available under Proteintech Group brand and is not available to purchase from any other manufacturer.

## Données de validation sélectionnées



Various lysates were subjected to SDS PAGE followed by western blot with 20995-1-AP (TMEM106B antibody) at dilution of 1:1000 incubated at room temperature for 1.5 hours.



WB result of TMEM106B antibody (20995-1-AP; 1:2000; incubated at room temperature for 1.5 hours) with sh-Control and sh-TMEM106B transfected HeLa cells.