

À des fins de recherche uniquement

# Anticorps Polyclonal de lapin anti-KLF5



Numéro de catalogue: 21017-1-AP

Phare

37 Publications

## Informations de base

Numéro de catalogue:

21017-1-AP

Taille:

150ul, Concentration: 600 µg/ml by Nanodrop;

Hôte:

Lapin

Isotype:

IgG

Immunogen Catalog Number:

AG15267

Numéro d'acquisition GenBank:

BC042131

Identification du gène (NCBI):

688

Nom complet:

Kruppel-like factor 5 (intestinal)

MW calculé

457 aa, 51 kDa

MW observés:

51-55 kDa, 85-120 kDa

Méthode de purification:

Purification par affinité contre l'antigène

Dilutions recommandées:

WB 1:5000-1:50000

IP 0.5-4.0 ug for IP and 1:500-1:1000 for WB

IHC 1:200-1:800

IF 1:50-1:500

## Applications

Applications testées:

IF, IHC, IP, WB, ELISA

Demandes citées:

ChIP, CoIP, IF, IHC, IP, WB

Spécificité de l'espèce:

Humain, rat, souris

Espèces citées:

Humain, rat, souris

**Remarque-IHC: il est suggéré de démasquer l'antigène avec un tampon de TE buffer pH 9,0; (\*) À défaut, le démasquage de l'antigène peut être effectué avec un tampon citrate pH 6,0.**

Contrôles positifs:

WB : cellules A549, cellules Caco-2, cellules COLO 320, cellules HCT 116, cellules HeLa, cellules HT-1080, cellules PC-3, tissu de côlon de rat, tissu de côlon de souris, tissu d'intestin grêle de souris, tissu testiculaire humain

IP: cellules HeLa,

IHC : tissu de cancer du côlon humain, tissu embryonnaire de souris

IF : cellules HeLa,

## Informations générales

KLF5, also known as BTEB2 and IKLF, is a member of the Krueppel-like transcription factor family. It is a transcription factor for SMemb/non-muscle myosin heavy chain-B (NMHC-B). It is a molecular marker of phenotypically modulated smooth-muscle cells. KLF5 seems to be a key element linking external stress and cardiovascular remodeling. This antibody detects the 50-60 kDa isoform 1 of KLF5. The antibody can recognize isoform 2 (33 kDa) and isoform 3 (18 kDa) too. 85 kDa, 95 kDa and 120 kDa of SUMOylated KLF5 were detected (PMID: 18500350).

## Publications notables

Autrice	Pubmed ID	Journal	Application
Yuehua Ma	30226614	Oncol Rep	WB,IHC,CoIP
Jian-Zhong Zhang	30322616	Biochem Biophys Res Commun	WB,IF
Xi Chen	33033902	Mol Biol Rep	WB,ChIP

## Stockage

Stockage:

Stocker à -20°C. Stable pendant un an après l'expédition.

Tampon de stockage:

PBS avec azoture de sodium à 0,02 % et glycérol à 50 % pH 7,3

L'aliquotage n'est pas nécessaire pour le stockage à -20C

\*\*\* Les 20ul contiennent 0,1% de BSA.

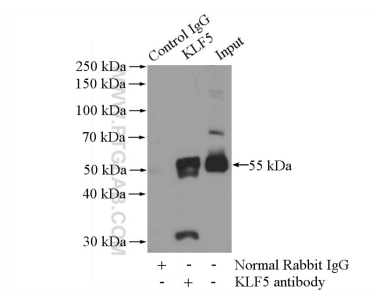
For technical support and original validation data for this product please contact:

T: 1 (888) 4PTGLAB (1-888-478-4522) (toll free in USA), or 1(312) 455-8498 (outside USA)

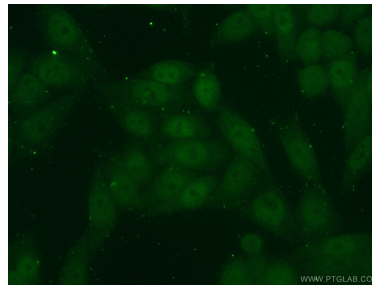
E: [proteintech@ptglab.com](mailto:proteintech@ptglab.com)  
W: [ptglab.com](http://ptglab.com)

This product is exclusively available under Proteintech Group brand and is not available to purchase from any other manufacturer.

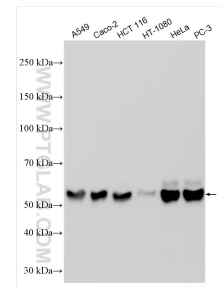
## Données de validation sélectionnées



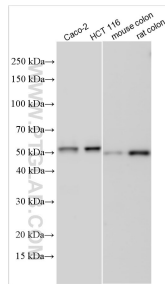
IP Result of anti-KLF5 (IP:21017-1-AP, 4ug; Detection:21017-1-AP 1:500) with HeLa cells lysate 2800ug.



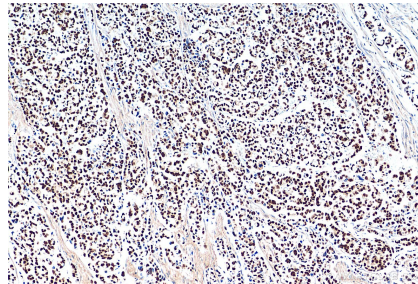
Immunofluorescent analysis of (10% Formaldehyde) fixed HeLa cells using 21017-1-AP (KLF5 antibody) at dilution of 1:50 and Alexa Fluor 488-conjugated AffiniPure Goat Anti-Rabbit IgG(H+L).



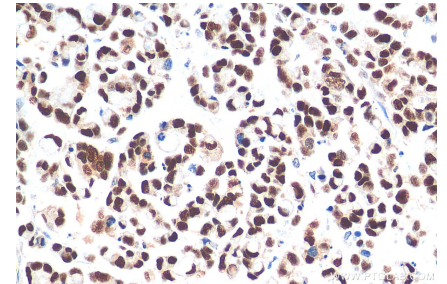
Various lysates were subjected to SDS PAGE followed by western blot with 21017-1-AP (KLF5 antibody) at dilution of 1:20000 incubated at room temperature for 1.5 hours.



Various lysates were subjected to SDS PAGE followed by western blot with 21017-1-AP (KLF5 antibody) at dilution of 1:20000 incubated at room temperature for 1.5 hours.



Immunohistochemical analysis of paraffin-embedded human colon cancer tissue slide using 21017-1-AP (KLF5 antibody) at dilution of 1:400 (under 10x lens). Heat mediated antigen retrieval with Tris-EDTA buffer (pH 9.0).



Immunohistochemical analysis of paraffin-embedded human colon cancer tissue slide using 21017-1-AP (KLF5 antibody) at dilution of 1:400 (under 40x lens). Heat mediated antigen retrieval with Tris-EDTA buffer (pH 9.0).