

À des fins de recherche uniquement

Anticorps Polyclonal de lapin anti-Willin



Numéro de catalogue: 21039-1-AP

Informations de base

Numéro de catalogue: 21039-1-AP	Numéro d'acquisition GenBank: BC029870	Méthode de purification: Purification par affinité contre l'antigène
Taille: 150ul , Concentration: 300 µg/ml by Nanodrop and 233 µg/ml by Bradford method using BSA as the standard;	Identification du gène (NCBI): 122786	Dilutions recommandées: WB 1:200-1:1000 IHC 1:20-1:200
Hôte: Lapin	Nom complet: FERM domain containing 6	
Isotype: IgG	MW calculé 622 aa, 72 kDa	
Immunogen Catalog Number: AG15375		

Applications

Applications testées: FC, IHC, WB, ELISA	Contrôles positifs: WB : cellules U-251, IHC : tissu de cancer du foie humain, tissu hépatique humain
Spécificité de l'espèce: Humain, rat, souris	
Remarque-IHC: il est suggéré de démasquer l'antigène avec un tampon de TE buffer pH 9.0; (*) À défaut, le démasquage de l'antigène peut être effectué avec un tampon citrate pH 6,0.	

Informations générales

Willin, also known as FRMD6 or human Expanded (hEx), is a member of the FERM-domain family of cytoskeletal crosslinkers. It is a potent inhibitor of cell proliferation, transformation and modulator of drug sensitivity, suggesting it possesses tumor suppressor properties. Willin is widely expressed in normal tissues. Although willin is found in the cytoplasm and membrane, it localizes to the nuclei of almost all tumors. This antibody was raised against the C-terminal region of human FRMD6 protein and is expected to recognize the endogenous FRMD6.

Stockage

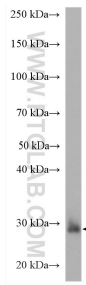
Stockage:
Stocker à -20°C. Stable pendant un an après l'expédition.
Tampon de stockage:
PBS avec azoture de sodium à 0,02 % et glycérol à 50 % pH 7,3
L'aliquotage n'est pas nécessaire pour le stockage à -20C

*** Les 20ul contiennent 0,1% de BSA.

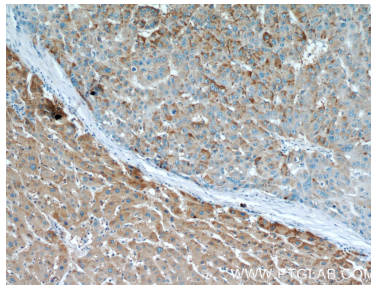
For technical support and original validation data for this product please contact:
T: 1 (888) 4PTGLAB (1-888-478-4522) (toll free in USA), or 1(312) 455-8498 (outside USA)
E: proteintech@ptglab.com
W: ptglab.com

This product is exclusively available under Proteintech Group brand and is not available to purchase from any other manufacturer.

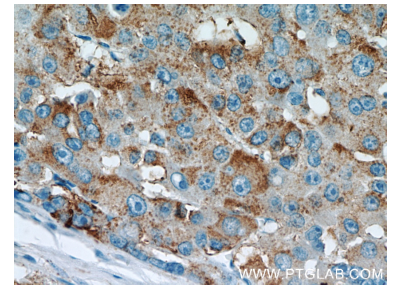
Données de validation sélectionnées



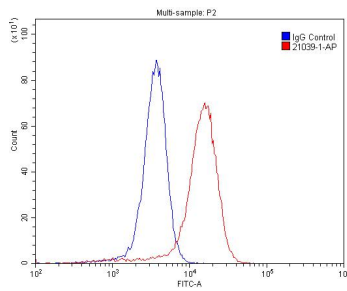
U-251 cells were subjected to SDS PAGE followed by western blot with 21039-1-AP (Willin antibody) at dilution of 1:200 incubated at room temperature for 1.5 hours.



Immunohistochemical analysis of paraffin-embedded human liver cancer using 21039-1-AP (Willin antibody) at dilution of 1:50 (under 10x lens).



Immunohistochemical analysis of paraffin-embedded human liver cancer using 21039-1-AP (Willin antibody) at dilution of 1:50 (under 40x lens).



1X10⁶ A431 cells were stained with .2ug Willin antibody (21039-1-AP, red) and control antibody (blue). Fixed with 4% PFA blocked with 3% BSA (30 min). Alexa Fluor 488-conjugated AffiniPure Goat Anti-Mouse IgG(H+L) with dilution 1:1500.