

À des fins de recherche uniquement

Anticorps Polyclonal de lapin anti-PML



Numéro de catalogue: 21041-1-AP

Phare

11 Publications

Informations de base

Numéro de catalogue:

21041-1-AP

Taille:

150ul, Concentration: 600 µg/ml by Nanodrop and 280 µg/ml by Bradford method using BSA as the standard;

Hôte:

Lapin

Isotype:

IgG

Immunogen Catalog Number:

AG15377

Numéro d'acquisition GenBank:

BC020994

Identification du gène (NCBI):

5371

Nom complet:

promyelocytic leukemia

MW calculé

882 aa, 98 kDa

MW observés:

120 kDa

Méthode de purification:

Purification par affinité contre l'antigène

Dilutions recommandées:

WB 1:200-1:1000

IP 0.5-4.0 ug for IP and 1:500-1:1000 for WB

IHC 1:100-1:400

IF 1:200-1:800

Applications

Applications testées:

IF, IHC, IP, WB, ELISA

Demandes citées:

IF, IHC, WB

Spécificité de l'espèce:

Humain, souris

Espèces citées:

Humain

Remarque-IHC: il est suggéré de démasquer l'antigène avec un tampon de TE buffer pH 9,0; (*) A défaut, 'le démasquage de l'antigène peut être effectué avec un tampon citrate pH 6,0.

Contrôles positifs:

WB : cellules HEK-293, cellules HeLa

IP : cellules HEK-293,

IHC : tissu hépatique humain,

IF : cellules HeLa,

Informations générales

PML, also named as MYL, RNF71 and TRIM19, is a member of RBCC/TRIM family of proteins that possess a RING finger domain, B-box, and coiled-coil domain. It functions as tumor suppressor. PML is required for normal, caspase-dependent apoptosis in response to DNA damage, FAS, TNF, or interferons. It plays a role in transcription regulation, DNA damage response, DNA repair and chromatin organization. PML plays a role in processes regulated by retinoic acid, regulation of cell division, terminal differentiation of myeloid precursor cells and differentiation of neural progenitor cells. It regulates PTEN compartmentalization through the inhibition of USP7-mediated deubiquitylation. A large number of alternative spliced transcripts are synthesized from the PML gene, resulting in a variety of PML proteins ranging in molecular weight from 48-97 kDa (PMID:11704850). And it can be detected as 70-130 kDa or larger due to the modification (especially SUMO) (PMID: 16778193, 22438555).

Publications notables

Autrice	Pubmed ID	Journal	Application
Orhi Barroso-Gomila	34795231	Nat Commun	WB,IF
Jiaojiao Shen	34763147	Mol Immunol	WB
Yang Li	32481657	Molecules	WB

Stockage

Stockage:

Stocker à -20°C. Stable pendant un an après l'expédition.

Tampon de stockage:

PBS avec azoture de sodium à 0,02 % et glycérol à 50 % pH 7,3

L'aliquotage n'est pas nécessaire pour le stockage à -20C

*** Les 20ul contiennent 0,1% de BSA.

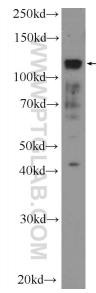
For technical support and original validation data for this product please contact:

T: 1 (888) 4PTGLAB (1-888-478-4522) (toll free in USA), or 1(312) 455-8498 (outside USA)

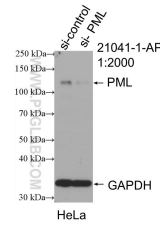
E: proteintech@ptglab.com
W: ptglab.com

This product is exclusively available under Proteintech Group brand and is not available to purchase from any other manufacturer.

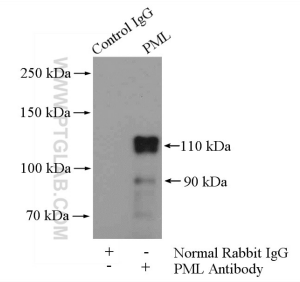
Données de validation sélectionnées



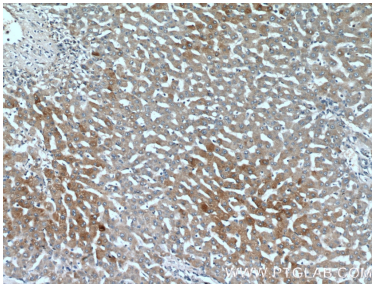
HEK-293 cells were subjected to SDS PAGE followed by western blot with 21041-1-AP (PML Antibody) at dilution of 1:300 incubated at room temperature for 1.5 hours.



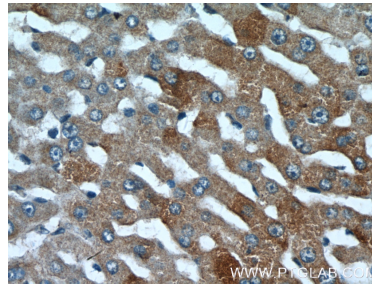
WB result of PML antibody (21041-1-AP; 1:2000; incubated at room temperature for 1.5 hours) with sh-Control and sh-PML transfected HeLa cells.



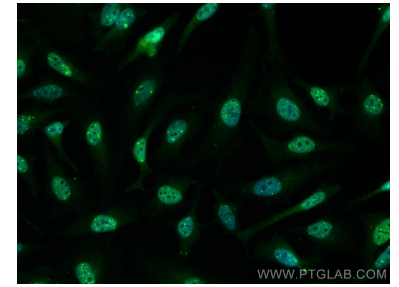
IP Result of anti-PML (IP:21041-1-AP, 4ug; Detection:21041-1-AP 1:500) with HEK-293 cells lysate 3200ug.



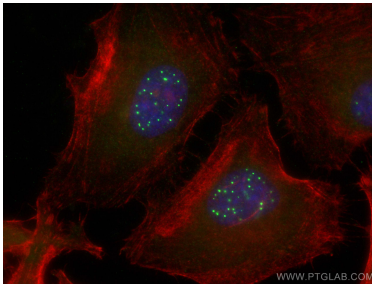
Immunohistochemical analysis of paraffin-embedded human liver tissue slide using 21041-1-AP (PML Antibody) at dilution of 1:200 (under 10x lens).



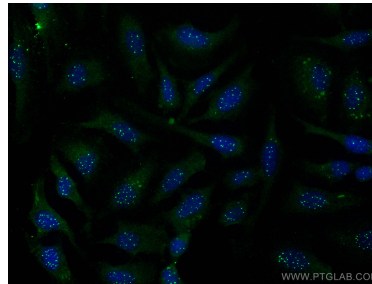
Immunohistochemical analysis of paraffin-embedded human liver tissue slide using 21041-1-AP (PML Antibody) at dilution of 1:200 (under 40x lens).



Immunofluorescent analysis of (4% PFA) fixed HeLa cells using PML antibody (21041-1-AP) at dilution of 1:400 and CoraLite®488-Conjugated AffiniPure Goat Anti-Rabbit IgG(H+L).



Immunofluorescent analysis of (-20°C Ethanol) fixed HeLa cells using PML antibody (21041-1-AP) at dilution of 1:200 and CoraLite®488-Conjugated AffiniPure Goat Anti-Rabbit IgG(H+L), CL594-phalloidin (red).



Immunofluorescent analysis of (-20°C Ethanol) fixed HeLa cells using PML antibody (21041-1-AP) at dilution of 1:200 and CoraLite®488-Conjugated AffiniPure Goat Anti-Rabbit IgG(H+L).