

À des fins de recherche uniquement

Anticorps Polyclonal de lapin anti-ESRP1



Numéro de catalogue: 21045-1-AP

Phare

6 Publications

Informations de base

Numéro de catalogue:

21045-1-AP

Taille:

150ul, Concentration: 450 µg/ml by Nanodrop and 280 µg/ml by Bradford method using BSA as the standard;

Hôte:

Lapin

Isotype:

IgG

Immunogen Catalog Number:

AG15386

Numéro d'acquisition GenBank:

BC099916

Identification du gène (NCBI):

54845

Nom complet:

epithelial splicing regulatory protein 1

MW calculé

681 aa, 76 kDa

MW observés:

76 kDa

Méthode de purification:

Purification par affinité contre l'antigène

Dilutions recommandées:

WB 1:500-1:2000

IP 0.5-4.0 ug for IP and 1:200-1:1000 for WB

Applications

Applications testées:

IP, WB, ELISA

Demandes citées:

IF, RIP, WB

Spécificité de l'espèce:

Humain, souris

Espèces citées:

Humain

Contrôles positifs:

WB : cellules COLO 320, cellules MCF-7, tissu pulmonaire de souris

IP : cellules COLO 320,

Informations générales

ESRP1, also named as Epithelial splicing regulatory protein 1, is a 681 amino acid protein, which belongs to the ESRP family. ESRP1 as a mRNA splicing factor that regulates the formation of epithelial cell-specific isoforms. ESRP1 specifically regulates the expression of FGFR2-IIIb, an epithelial cell-specific isoform of FGFR2 and also regulates the splicing of CD44, CTNND1, ENAH, 3 transcripts that undergo changes in splicing during the epithelial-to-mesenchymal transition (EMT). ESRP1 exists various isoforms and molecular weight of each isoform is 76 kDa, 67 kDa, and 73 kDa.

Publications notables

Autrice	Pubmed ID	Journal	Application
Wei Zhao	31570856	Cell Death Differ	WB
Christina R Adams	31134896	Elife	WB
Shuo Chen	33483472	Cell Death Discov	WB

Stockage

Stockage:

Stocker à -20°C. Stable pendant un an après l'expédition.

Tampon de stockage:

PBS avec azoture de sodium à 0,02 % et glycérol à 50 % pH 7,3

L'aliquotage n'est pas nécessaire pour le stockage à -20C

*** Les 20ul contiennent 0,1% de BSA.

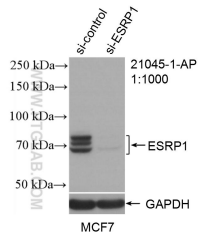
For technical support and original validation data for this product please contact:

T: 1 (888) 4PTGLAB (1-888-478-4522) (toll free in USA), or 1(312) 455-8498 (outside USA)

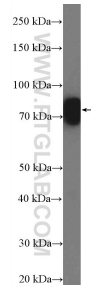
E: proteintech@ptglab.com
W: ptglab.com

This product is exclusively available under Proteintech Group brand and is not available to purchase from any other manufacturer.

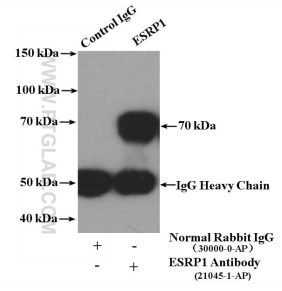
Données de validation sélectionnées



WB result of ESRP1 antibody (21045-1-AP; 1:1000; incubated at room temperature for 1.5 hours) with sh-Control and sh-ESRP1 transfected MCF-7 cells.



COLO 320 cells were subjected to SDS PAGE followed by western blot with 21045-1-AP (ESRP1 Antibody) at dilution of 1:1000 incubated at room temperature for 1.5 hours.



IP Result of anti-ESRP1 (IP:21045-1-AP, 4ug; Detection:21045-1-AP 1:300) with COLO 320 cells lysate 4000ug.