

À des fins de recherche uniquement

Anticorps Polyclonal de lapin anti-OXA1L



Numéro de catalogue: 21055-1-AP

Phare

10 Publications

Informations de base

Numéro de catalogue: 21055-1-AP	Numéro d'acquisition GenBank: BC001669	Méthode de purification: Purification par affinité contre l'antigène
Taille: 150ul , Concentration: 600 µg/ml by Nanodrop and 353 µg/ml by Bradford method using BSA as the standard;	Identification du gène (NCBI): 5018	Dilutions recommandées: WB 1:2000-1:10000 IF 1:400-1:1600
Hôte: Lapin	Nom complet: oxidase (cytochrome c) assembly 1-like	
Isotype: IgG	MW calculé 437 aa, 49 kDa	
Immunogen Catalog Number: AG13819	MW observés: 42 kDa	

Applications

Applications testées:

IF, WB, ELISA

Demandes citées:

IF, IP, WB

Spécificité de l'espèce:

Humain, rat, souris

Espèces citées:

Humain, souris

Contrôles positifs:

WB : cellules HepG2, cellules L02, cellules NIH/3T3, tissu hépatique de rat, tissu hépatique de souris

IF : cellules HepG2,

Informations générales

OXA1L/Oxa1 is a member of the conserved Oxa1/YidC/Alb3 protein family and is required for cytochrome c oxidase assembly. The OXA1L protein was initially identified in yeast proteins involved in the biogenesis of the mitochondrial respiratory chain complexes. It locates in the inner membrane of mitochondria and may be involved in mediating the insertion of proteins from the matrix into the inner membrane.

Publications notables

Autrice	Pubmed ID	Journal	Application
Kyle Thompson	30201738	EMBO Mol Med	WB
Kah Ying Ng	34718584	Hum Mol Genet	WB
Kara L Perks	33024056	Aging (Albany NY)	WB

Stockage

Stockage:

Stocker à -20°C. Stable pendant un an après l'expédition.

Tampon de stockage:

PBS avec azoture de sodium à 0,02 % et glycérol à 50 % pH 7,3

L'aliquotage n'est pas nécessaire pour le stockage à -20C

*** Les 20ul contiennent 0,1% de BSA.

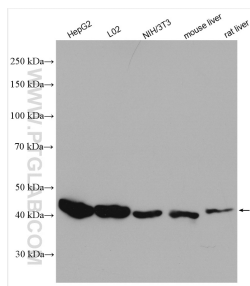
For technical support and original validation data for this product please contact:

T: 1 (888) 4PTGLAB (1-888-478-4522) (toll free in USA), or 1(312) 455-8498 (outside USA)

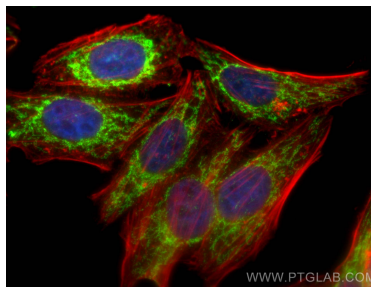
E: proteintech@ptglab.com
W: ptglab.com

This product is exclusively available under Proteintech Group brand and is not available to purchase from any other manufacturer.

Données de validation sélectionnées



Various lysates were subjected to SDS PAGE followed by western blot with 21055-1-AP (OXA1L antibody) at dilution of 1:5000 incubated at room temperature for 1.5 hours.



Immunofluorescent analysis of (4% PFA) fixed HepG2 cells using OXA1L antibody (21055-1-AP) at dilution of 1:800 and Coralite@488-Conjugated AffiniPure Goat Anti-Rabbit IgG(H+L), CL594-Phalloidin (red).