

À des fins de recherche uniquement

Anticorps Polyclonal de lapin anti-SIM2



Numéro de catalogue: 21069-1-AP

1 Publications

Informations de base

Numéro de catalogue:
21069-1-AP

Taille:
150ul, Concentration: 200 µg/ml by Nanodrop and 133 µg/ml by Bradford method using BSA as the standard;

Hôte:
Lapin

Isotype:
IgG

Immunogen Catalog Number:
AG15204

Numéro d'acquisition GenBank:
BC110444

Identification du gène (NCBI):
6493

Nom complet:
single-minded homolog 2 (Drosophila)

MW calculé
667 aa, 73 kDa

MW observés:
60-64 kDa

Méthode de purification:
Purification par affinité contre l'antigène

Dilutions recommandées:
WB 1:500-1:3000
IP 0.5-4.0 ug for IP and 1:500-1:1000 for WB

Applications

Applications testées:
IP, WB, ELISA

Demandes citées:
ChIP

Spécificité de l'espèce:
Humain, souris

Espèces citées:
Humain

Contrôles positifs:

WB : cellules COLO 320, cellules HeLa, cellules HepG2, cellules U-251, tissu de muscle squelettique humain

IP : tissu de muscle squelettique de souris,

Informations générales

SIM2, also named as single-minded homolog 2, is a 667 amino acid protein, which contains 1 bHLH (basic helix-loop-helix) domain and one PAS-associated C-terminal domain. SIM2 localizes in the nucleus and has two isoforms. Isoform SIM2 is a 73 kDa protein and Isoform SIM2S is 63 kDa protein. SIM2 as a transcription factor may be a master gene of CNS development in cooperation with Arnt. It may have pleiotropic effects in the tissues expressed during development.

Publications notables

Autrice	Pubmed ID	Journal	Application
Emily Lyn Button	35730699	Biochem J	ChIP

Stockage

Stockage:
Stocker à -20°C. Stable pendant un an après l'expédition.

Tampon de stockage:
PBS avec azote de sodium à 0,02 % et glycérol à 50 % pH 7,3
L'aliquotage n'est pas nécessaire pour le stockage à -20C

*** Les 20ul contiennent 0,1% de BSA.

For technical support and original validation data for this product please contact:

T: 1 (888) 4PTGLAB (1-888-478-4522) (toll free in USA), or 1(312) 455-8498 (outside USA)

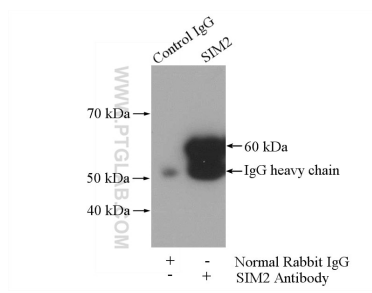
E: proteintech@ptglab.com
W: ptglab.com

This product is exclusively available under Proteintech Group brand and is not available to purchase from any other manufacturer.

Données de validation sélectionnées



Various lysates were subjected to SDS PAGE followed by western blot with 21069-1-AP (SIM2 antibody) at dilution of 1:1500 incubated at room temperature for 1.5 hours.



IP Result of anti-SIM2 (IP:21069-1-AP, 4ug;
Detection:21069-1-AP 1:800) with mouse skeletal
muscle tissue lysate 2200ug.