

À des fins de recherche uniquement

Anticorps Polyclonal de lapin anti-MEKK3



Numéro de catalogue: 21072-1-AP

1 Publications

Informations de base

Numéro de catalogue:

21072-1-AP

Taille:

150ul, Concentration: 800 µg/ml by Nanodrop;

Hôte:

Lapin

Isotype:

IgG

Immunogen Catalog Number:

AG15223

Numéro d'acquisition GenBank:

BC090859

Identification du gène (NCBI):

4215

Nom complet:

mitogen-activated protein kinase kinase kinase 3

MW calculé

657 aa, 74 kDa

MW observés:

71 kDa, 74 kDa

Méthode de purification:

Purification par affinité contre l'antigène

Dilutions recommandées:

WB 1:200-1:1000

IP 0.5-4.0 µg for IP and 1:200-1:1000 for WB

IHC 1:50-1:500

Applications

Applications testées:

IHC, IP, WB, ELISA

Demandes citées:

IF, IP, WB

Spécificité de l'espèce:

Humain

Espèces citées:

Humain, souris

Contrôles positifs:

WB : tissu hépatique de souris,

IP : tissu hépatique de souris,

IHC : tissu de cancer du foie humain,

Remarque-IHC: il est suggéré de démasquer l'antigène avec un tampon de TE buffer pH 9,0; (*) À défaut, 'le démasquage de l'antigène peut être 'effectué avec un tampon citrate pH 6,0.

Informations générales

The mitogen-activated protein/ERK kinase kinase 3 (MEKK3) is a member of a family of MEKK/Ste11 serine/threonine protein kinases. One function of MEKK3 is to serve as an upstream regulatory kinase in the mitogen-activated protein kinase cascade, however, it also plays a critical role in other signaling pathways. MEKK3 regulates several important functions including cell survival and proliferation. It is ubiquitously expressed in multiple tissues and has been found in complexes with scaffold proteins and other kinases. (PMID: 18206350). Cerebral cavernous malformations (CCMs) complex regulation of MEKK3 is essential during vertebrate heart development. MEKK3 signalling and KLF2/4 may be targeted to develop new CCM therapeutics.

Publications notables

Autrice	Pubmed ID	Journal	Application
Jinqiu Lu	29662197	Oncogene	WB,IF,IP

Stockage

Stockage:

Stocker à -20°C. Stable pendant un an après l'expédition.

Tampon de stockage:

PBS avec azoture de sodium à 0,02 % et glycérol à 50 % pH 7,3

L'aliquotage n'est pas nécessaire pour le stockage à -20C

*** Les 20ul contiennent 0,1% de BSA.

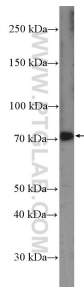
For technical support and original validation data for this product please contact:

T: 1 (888) 4PTGLAB (1-888-478-4522) (toll free in USA), or 1(312) 455-8498 (outside USA)

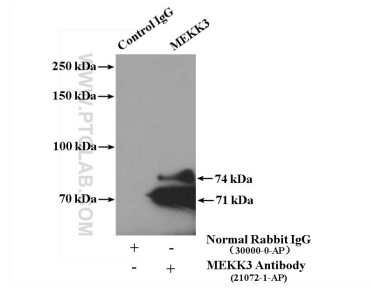
E: proteintech@ptglab.com
W: ptglab.com

This product is exclusively available under Proteintech Group brand and is not available to purchase from any other manufacturer.

Données de validation sélectionnées

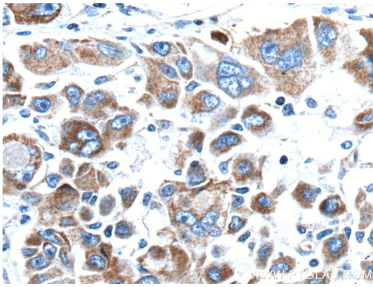


mouse liver tissue were subjected to SDS PAGE followed by western blot with 21072-1-AP (MEK3 antibody at dilution of 1:300 incubated at room temperature for 1.5 hours.



IP Result of anti-MEK3 (IP:21072-1-AP, 4ug; Detection:21072-1-AP 1:300) with mouse liver tissue lysate 7000ug.

Immunohistochemical analysis of paraffin-embedded human liver cancer tissue slide using 21072-1-AP (MEK3 antibody at dilution of 1:200 (under 10x lens). Heat mediated antigen retrieval with Tris-EDTA buffer (pH 9.0).



Immunohistochemical analysis of paraffin-embedded human liver cancer tissue slide using 21072-1-AP (MEK3 antibody at dilution of 1:200 (under 40x lens). Heat mediated antigen retrieval with Tris-EDTA buffer (pH 9.0).