

À des fins de recherche uniquement

# Anticorps Polyclonal de lapin anti-DKK1



Numéro de catalogue: 21112-1-AP

Phare

30 Publications

## Informations de base

Numéro de catalogue:	21112-1-AP	Numéro d'acquisition GenBank:	BC001539	Méthode de purification:	Purification par affinité contre l'antigène
Taille:	150ul, Concentration: 700 µg/ml by Nanodrop;	Identification du gène (NCBI):	22943	Dilutions recommandées:	WB 1:2000-1:16000 IHC 1:50-1:500
Hôte:	Lapin	Nom complet:	dickkopf homolog 1 (Xenopus laevis)		
Isotype:	IgG	MW calculé	266 aa, 29 kDa		
Immunogen Catalog Number:	AG15110	MW observés:	30-35 kDa		

## Applications

### Applications testées:

IHC, WB, ELISA

### Demandes citées:

IHC, WB

### Spécificité de l'espèce:

Humain, rat, souris

### Espèces citées:

Humain, Lapin, rat, souris

### Contrôles positifs:

WB : cellules A549, cellules K-562

IHC : tissu de gliome humain, tissu placentaire humain

**Remarque-IHC: il est suggéré de démasquer l'antigène avec un tampon de TE buffer pH 9,0; (\*) À défaut, le démasquage de l'antigène peut être effectué avec un tampon citrate pH 6,0.**

## Informations générales

DKK1, also named a SK and Dickkopf-1, belongs to the dickkopf family. DKKs play an important role in vertebrate development, where they locally inhibit Wnt regulated processes such as antero-posterior axial patterning, limb development, somitogenesis and eye formation. In the adult, Dkks are implicated in bone formation and bone disease, cancer and Alzheimer disease. SDS-PAGE and Western blot analysis demonstrated that DKK1 is expressed as a 35-kDa doublet protein, which is larger than the deduced molecular mass of 26 kDa. Sometime DKK1 is expressed as a 42- to 50-kDa secreted protein, with little change observed after glycanase treatment.

## Publications notables

Autrice	Pubmed ID	Journal	Application
Yimeng Cui	36185284	Front Oncol	WB
Haihua Zhang	31520488	Biofactors	
Guanxiong Ding	34697293	Cell Death Dis	WB

## Stockage

### Stockage:

Stocker à -20°C. Stable pendant un an après l'expédition.

### Tampon de stockage:

PBS avec azoture de sodium à 0,02 % et glycérol à 50 % pH 7,3

L'aliquotage n'est pas nécessaire pour le stockage à -20C

\*\*\* Les 20ul contiennent 0,1% de BSA.

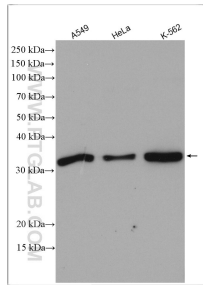
For technical support and original validation data for this product please contact:

T: 1 (888) 4PTGLAB (1-888-478-4522) (toll free in USA), or 1(312) 455-8498 (outside USA)

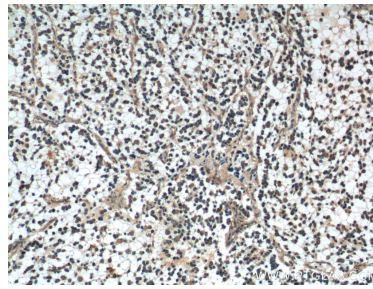
E: [proteintech@ptglab.com](mailto:proteintech@ptglab.com)  
W: [ptglab.com](http://ptglab.com)

This product is exclusively available under Proteintech Group brand and is not available to purchase from any other manufacturer.

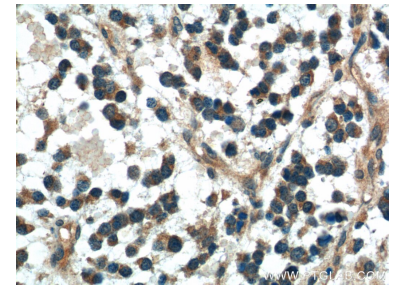
## Données de validation sélectionnées



Various lysates were subjected to SDS PAGE followed by western blot with 21112-1-AP (DKK1 antibody) at dilution of 1:8000 incubated at room temperature for 1.5 hours.



Immunohistochemical analysis of paraffin-embedded human gliomas tissue slide using 21112-1-AP (DKK1 Antibody) at dilution of 1:200 (under 10x lens).



Immunohistochemical analysis of paraffin-embedded human gliomas tissue slide using 21112-1-AP (DKK1 Antibody) at dilution of 1:200 (under 40x lens).