

À des fins de recherche uniquement

# Anticorps Polyclonal de lapin anti-ACE2



Numéro de catalogue: 21115-1-AP

Phare

101 Publications

## Informations de base

Numéro de catalogue:

21115-1-AP

Taille:

150ul, Concentration: 500 µg/ml by Nanodrop;

Hôte:

Lapin

Isotype:

IgG

Immunogen Catalog Number:

AG15455

Numéro d'acquisition GenBank:

BC048094

Identification du gène (NCBI):

59272

Nom complet:

angiotensin I converting enzyme (peptidyl-dipeptidase A) 2

MW calculé

805 aa, 92 kDa

MW observés:

120 kDa, 92 kDa

Méthode de purification:

Purification par affinité contre l'antigène

Dilutions recommandées:

WB 1:500-1:2000

IP 0.5-4.0 ug for IP and 1:500-1:2000 for WB

IHC 1:500-1:1000

IF 1:50-1:500

## Applications

Applications testées:

FC, IF, IHC, IP, WB, ELISA

Demandes citées:

CoIP, FC, IF, IHC, IP, WB

Spécificité de l'espèce:

Humain, rat, souris

Espèces citées:

Humain, rat, singe, souris

Contrôles positifs:

WB : tissu rénal de souris, tissu de muscle squelettique humain

IP : tissu rénal de souris,

IHC : tissu rénal humain, tissu d'intestin grêle humain, tissu testiculaire de souris

IF : tissu rénal humain, tissu rénal de souris

**Remarque-IHC: il est suggéré de démasquer l'antigène avec un tampon de TE buffer pH 9,0; (\*) À défaut, le démasquage de l'antigène peut être effectué avec un tampon citrate pH 6,0.**

## Informations générales

ACE2 (Angiotensin-converting enzyme 2), also named as ACEH, is a zinc metalloprotease of the ACE family and a critical regulator of the reninangiotensin system. ACE2 has a more restricted tissue distribution than ACE, being found predominantly in the heart, kidneys, and testes although low levels have been detected in a variety of tissues (PMID:15983030). ACE2 has been shown to be a functional receptor of the human coronaviruses SARS-CoV and SARS-CoV-2 (PMID: 32142651). The expression level and expression pattern of human ACE2 in different tissues might be critical for the susceptibility, symptoms, and outcome of 2019-nCoV/SARS-CoV-2 infection (PMID: 32133153). It can be used as a potential therapeutic target of SARS-CoV-2 (PMID: 32125455). The calculated molecular weight of ACE2 is 92kDa but it migrates to 120kDa due to N-glycosylation (PMID:16166094). Sometimes, several cleaved fragments can also be detected as 75kDa, 50 kDa or 37kDa (PMID: 29561187, 22009550, 30759273). It has 2 isoforms produced by alternative splicing. This antibody is specific to ACE2. The location of ACE2 is membrane and cytoplasm, however it accumulates in the nucleus during the mitosis (PMID: 1730413/PMID: 18292088).

## Publications notables

Autrice	Pubmed ID	Journal	Application
Shunhua Long	36178477	Viral Immunol	FC
Zemin Zhu	36175845	BMC Mol Cell Biol	WB
Chang-Ki Oh	36175661	Nat Chem Biol	WB,IF

## Stockage

Stockage:

Stocker à -20°C. Stable pendant un an après l'expédition.

Tampon de stockage:

PBS avec azoture de sodium à 0,02 % et glycérol à 50 % pH 7,3

L'aliquoteage n'est pas nécessaire pour le stockage à -20C

\*\*\* Les 20ul contiennent 0,1% de BSA.

For technical support and original validation data for this product please contact:

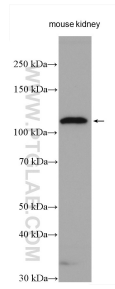
T: 1 (888) 4PTGLAB (1-888-478-4522) (toll free in USA), or 1(312) 455-8498 (outside USA)

E: proteintech@ptglab.com

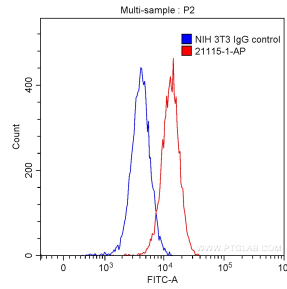
W: ptglab.com

This product is exclusively available under Proteintech Group brand and is not available to purchase from any other manufacturer.

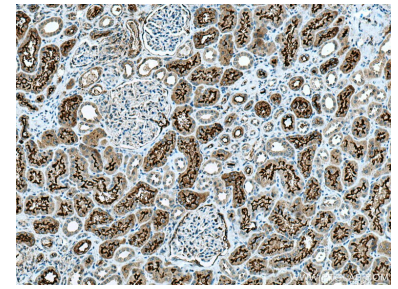
## Données de validation sélectionnées



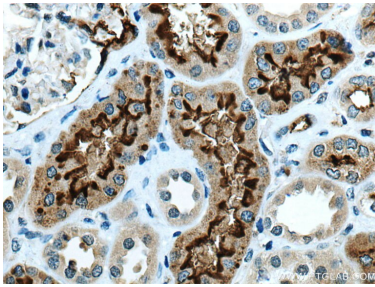
mouse kidney tissue lysates were subjected to SDS PAGE followed by western blot with 21115-1-AP (ACE2 antibody) at dilution of 1:1000 incubated at room temperature for 1.5 hours.



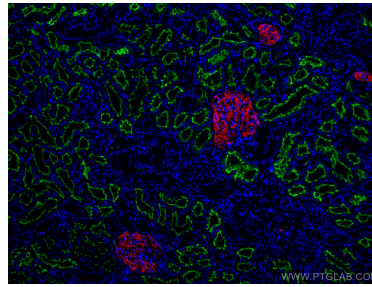
$1 \times 10^6$  NIH/3T3 cells were stained with 0.20 ug/test Anti-Human ACE2 (21115-1-AP) (red) or 0.20 ug control antibody (blue) and CoraLite®488-Conjugated AffiniPure Goat Anti-Rabbit IgG(H+L) with dilution 1:1000. Fixed with 90% MeOH.



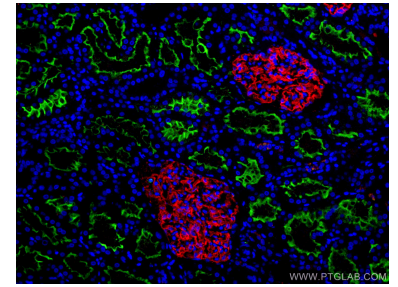
Immunohistochemical analysis of paraffin-embedded human kidney tissue slide using 21115-1-AP (ACE2 antibody) at dilution of 1:1000 (under 10x lens). Heat mediated antigen retrieval with Tris-EDTA buffer (pH 9.0).



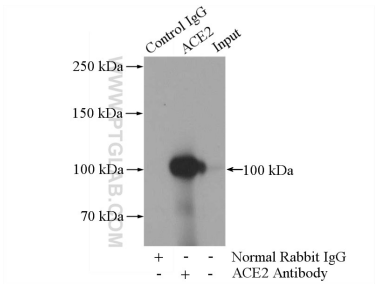
Immunohistochemical analysis of paraffin-embedded human kidney tissue slide using 21115-1-AP (ACE2 antibody) at dilution of 1:1000 (under 40x lens). Heat mediated antigen retrieval with Tris-EDTA buffer (pH 9.0).



Immunofluorescent analysis of (4% PFA) fixed human kidney tissue using ACE2 antibody (21115-1-AP) at dilution of 1:200 and CoraLite®488-Conjugated AffiniPure Goat Anti-Rabbit IgG(H+L), PTPRO antibody (67000-1-Ig, Clone: 2F2B4, red).



Immunofluorescent analysis of (4% PFA) fixed human kidney tissue using ACE2 antibody (21115-1-AP) at dilution of 1:200 and CoraLite®488-Conjugated AffiniPure Goat Anti-Rabbit IgG(H+L), PTPRO antibody (67000-1-Ig, Clone: 2F2B4, red).



IP Result of anti-ACE2 (IP:21115-1-AP, 5ug; Detection:21115-1-AP 1:1000) with mouse kidney tissue lysate 4000ug.