

À des fins de recherche uniquement

Anticorps Polyclonal de lapin anti-CD3 Gamma



Numéro de catalogue: 21120-1-AP

2 Publications

Informations de base

Numéro de catalogue:
21120-1-AP

Taille:
150ul, Concentration: 600 µg/ml by Nanodrop and 387 µg/ml by Bradford method using BSA as the standard;

Hôte:
Lapin

Isotype:
IgG

Immunogen Catalog Number:
AG15475

Numéro d'acquisition GenBank:
BC113830

Identification du gène (NCBI):
917

Nom complet:
CD3g molecule, gamma (CD3-TCR complex)

MW calculé
182 aa, 20 kDa

MW observés:
20-25 kDa

Méthode de purification:
Purification par affinité contre l'antigène

Dilutions recommandées:
WB 1:500-1:2000
IP 0.5-4.0 ug for IP and 1:500-1:1000 for WB
IHC 1:50-1:500

Applications

Applications testées:
FC, IHC, IP, WB, ELISA

Demandes citées:
IHC

Spécificité de l'espèce:
Humain, rat, souris

Espèces citées:
Humain

Remarque-IHC: il est suggéré de démasquer l'antigène avec un tampon de TE buffer pH 9,0; (*) A défaut, 'le démasquage de l'antigène peut être 'effectué avec un tampon citrate pH 6,0.

Contrôles positifs:

WB : tissu de thymus de souris, cellules Jurkat

IP : tissu de thymus de souris,

IHC : tissu d'amygdalite humain, tissu de lymphome humain

Informations générales

CD3 is a complex of proteins that directly associates with the T cell receptor (TCR). The TCR/CD3 complex of T-lymphocytes consists of either a TCR alpha/beta or TCR gamma/delta heterodimer coexpressed at the cell surface with the invariant subunits of CD3 labeled gamma, delta, epsilon, zeta, and eta. The TCR recognizes antigens bound to major histocompatibility complex (MHC) molecules. TCR-mediated peptide-MHC recognition is transmitted to the CD3 complex, leading to the intracellular signal transduction. CD3 is considered to be a pan-T cell marker for detection of normal and neoplastic T cells.

Publications notables

Autrice	Pubmed ID	Journal	Application
Sohji Nishina	30510994	Cell Mol Gastroenterol Hepatol	IHC
Shogo Tsuji	37045472	Life Sci Alliance	

Stockage

Stockage:
Stocker à -20°C. Stable pendant un an après l'expédition.

Tampon de stockage:
PBS avec azoture de sodium à 0,02 % et glycérol à 50 % pH 7,3
L'aliquotage n'est pas nécessaire pour le stockage à -20C

*** Les 20ul contiennent 0,1% de BSA.

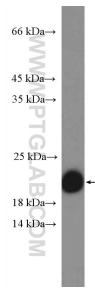
For technical support and original validation data for this product please contact:

T: 1 (888) 4PTGLAB (1-888-478-4522) (toll free in USA), or 1(312) 455-8498 (outside USA)

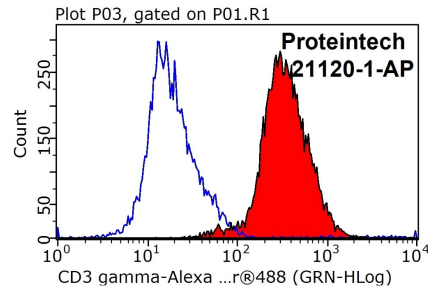
E: proteintech@ptglab.com
W: ptglab.com

This product is exclusively available under Proteintech Group brand and is not available to purchase from any other manufacturer.

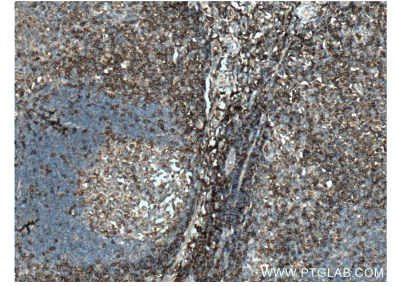
Données de validation sélectionnées



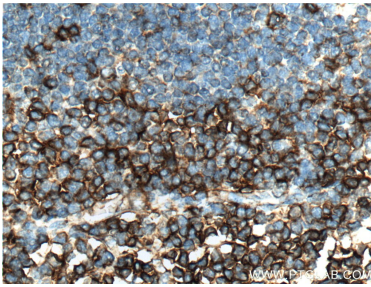
mouse thymus tissue were subjected to SDS PAGE followed by western blot with 21120-1-AP (CD3 gamma antibody at dilution of 1:1000 incubated at room temperature for 1.5 hours.



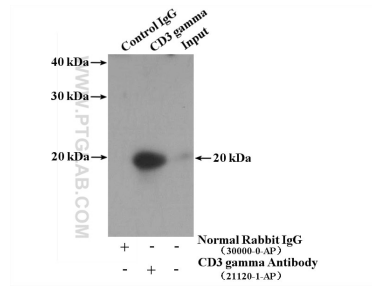
1X10⁶ Jurkat cells were stained with 0.5ug CD3 gamma antibody (21120-1-AP, red) and control antibody (blue). Fixed with 90% MeOH blocked with 3% BSA (30 min). Alexa Fluor 488-conjugated AffiniPure Goat Anti-Rabbit IgG(H+L) with dilution 1:1000.



Immunohistochemical analysis of paraffin-embedded human tonsillitis tissue slide using 21120-1-AP (CD3 gamma antibody at dilution of 1:200 (under 10x lens). Heat mediated antigen retrieval with Tris-EDTA buffer (pH 9.0).



Immunohistochemical analysis of paraffin-embedded human tonsillitis tissue slide using 21120-1-AP (CD3 gamma antibody at dilution of 1:200 (under 40x lens). Heat mediated antigen retrieval with Tris-EDTA buffer (pH 9.0).



IP Result of anti-CD3 gamma (IP:21120-1-AP, 4ug; Detection:21120-1-AP 1:600) with mouse thymus tissue lysate 2800ug.