

À des fins de recherche uniquement

Anticorps Polyclonal de lapin anti-Claudin 18



Numéro de catalogue: 21126-1-AP

5 Publications

Informations de base

Numéro de catalogue:

21126-1-AP

Taille:

150ul, Concentration: 500 µg/ml by Nanodrop and 433 µg/ml by Bradford method using BSA as the standard;

Hôte:

Lapin

Isotype:

IgG

Immunogen Catalog Number:

AG15517

Numéro d'acquisition GenBank:

BC146668

Identification du gène (NCBI):

51208

Nom complet:

claudin 18

MW calculé

261 aa, 28 kDa

MW observés:

28-29 kDa

Méthode de purification:

Purification par affinité contre l'antigène

Dilutions recommandées:

WB 1:500-1:1000

IP 0.5-4.0 ug for IP and 1:500-1:1000 for WB

IHC 1:50-1:400

IF 1:50-1:500

Applications

Applications testées:

IF, IHC, IP, WB, ELISA

Demandes citées:

IF, IHC, WB

Spécificité de l'espèce:

Humain, rat, souris

Espèces citées:

Humain, rat, souris

Remarque-IHC: il est suggéré de démasquer l'antigène avec un tampon de TE buffer pH 9,0; (*) A défaut, 'le démasquage de l'antigène peut être effectué avec un tampon citrate pH 6,0.

Contrôles positifs:

WB : tissu rénal de souris,

IP : tissu d'estomac de souris,

IHC : tissu d'estomac humain, tissu de cancer de l'estomac humain, tissu de cancer du pancréas humain, tissu de tumeur ovarienne humain

IF : cellules MKN-45,

Informations générales

Claudin 18 (CLDN18) belongs to the large claudin family of proteins, which are tetraspan transmembrane proteins of tight junctions (PMID: 11585919; 18036336). Claudins exhibit specific patterns of expression in different tissues (PMID: 15447685). CLDN18 is specifically expressed in the stomach and lung. CLDN18 has two alternatively spliced variants, CLDN18.1 and CLDN18.2. CLDN18.2 is a highly selective gastric lineage marker that determines the gastric phenotype in a neoplastic condition, whereas CLDN18.1 is lung specific (PMID: 11585919; 21832145). Altered CLDN18 expression has been reported in various human malignancies, including gastric cancer, lung adenocarcinoma, and pancreatic neoplasm (PMID: 17459057; 22076167; 21832145). This antibody can recognize both CLDN18.1 and CLDN18.2.

Publications notables

| Auteur | Pubmed ID | Journal | Application |
|--------------|-----------|--------------------------|-------------|
| Chunyan Wang | 32160957 | J Stroke Cerebrovasc Dis | IF |
| Ruixue Yang | 31173170 | Int J Mol Med | WB,IF |
| Yang Chen | 35284551 | Ann Transl Med | IHC |

Stockage

Stockage:

Stocker à -20°C. Stable pendant un an après l'expédition.

Tampon de stockage:

PBS avec azoture de sodium à 0,02 % et glycérol à 50 % pH 7,3

L'aliquotage n'est pas nécessaire pour le stockage à -20C

*** Les 20ul contiennent 0,1% de BSA.

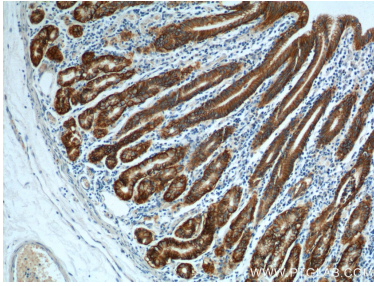
For technical support and original validation data for this product please contact:

T: 1 (888) 4PTGLAB (1-888-478-4522) (toll free in USA), or 1(312) 455-8498 (outside USA)

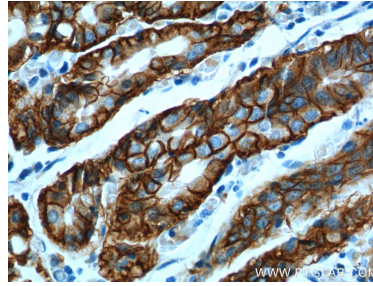
E: proteintech@ptglab.com
W: ptglab.com

This product is exclusively available under Proteintech Group brand and is not available to purchase from any other manufacturer.

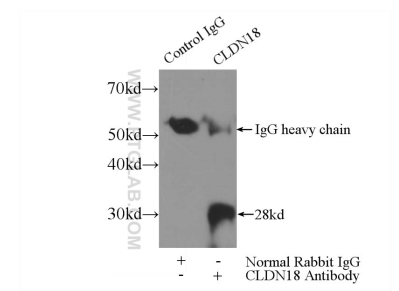
Données de validation sélectionnées



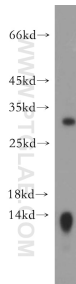
Immunohistochemical analysis of paraffin-embedded human stomach tissue slide using 21126-1-AP (Claudin 18 antibody at dilution of 1:200) (under 10x lens).



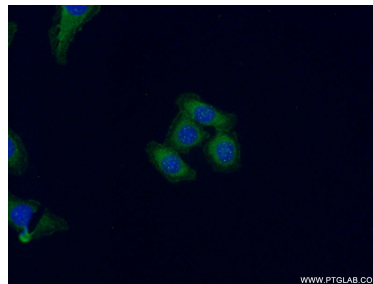
Immunohistochemical analysis of paraffin-embedded human stomach tissue slide using 21126-1-AP (Claudin 18 antibody at dilution of 1:200) (under 40x lens).



IP Result of anti-Claudin 18 (IP:21126-1-AP, 3ug; Detection:21126-1-AP 1:500) with mouse stomach tissue lysate 4000ug.



mouse kidney tissue were subjected to SDS PAGE followed by western blot with 21126-1-AP (Claudin 18 antibody) at dilution of 1:500 incubated at room temperature for 1.5 hours.



Immunofluorescent analysis of (-20°C Ethanol) fixed MKN-45 cells using 21126-1-AP (Claudin 18 antibody) at dilution of 1:50 and Alexa Fluor 488-conjugated AffiniPure Goat Anti-Rabbit IgG(H+L).