

À des fins de recherche uniquement

Anticorps Polyclonal de lapin anti-SPACA3



Numéro de catalogue: 21137-1-AP

Informations de base

Numéro de catalogue:

21137-1-AP

Taille:

150ul, Concentration: 450 µg/ml by Nanodrop and 413 µg/ml by Bradford method using BSA as the standard;

Hôte:

Lapin

Isotype:

IgG

Immunogen Catalog Number:

AG15589

Numéro d'acquisition GenBank:

BC029867

Identification du gène (NCBI):

124912

Nom complet:

sperm acrosome associated 3

MW calculé

215 aa, 23 kDa

MW observés:

28-32 kDa, 46-50 kDa

Méthode de purification:

Purification par affinité contre l'antigène

Dilutions recommandées:

WB 1:200-1:1000

IF 1:20-1:200

Applications

Applications testées:

IF, WB, ELISA

Spécificité de l'espèce:

Humain, rat, souris

Contrôles positifs:

WB : cellules HEK-293, tissu testiculaire de souris

IF : cellules HEK-293,

Informations générales

SPACA3, also named as LYC3, LYZL3, SLLP1, SPRASA, CT54 and ALLP-17, belongs to the glycosyl hydrolase 22 family. It is a sperm surface membrane protein that may be involved in sperm-egg plasma membrane adhesion and fusion during fertilization. It could be a potential receptor for the egg oligosaccharide residue N-acetylglucosamine, which is present in the extracellular matrix over the egg plasma membrane. SPACA3 has a Dimer form (PMID:15982649).

Stockage

Stockage:

Stocker à -20°C. Stable pendant un an après l'expédition.

Tampon de stockage:

PBS avec azoture de sodium à 0,02 % et glycérol à 50 % pH 7,3

L'aliquotage n'est pas nécessaire pour le stockage à -20C

*** Les 20ul contiennent 0,1% de BSA.

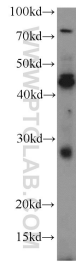
For technical support and original validation data for this product please contact:

T: 1 (888) 4PTGLAB (1-888-478-4522) (toll free in USA), or 1(312) 455-8498 (outside USA)

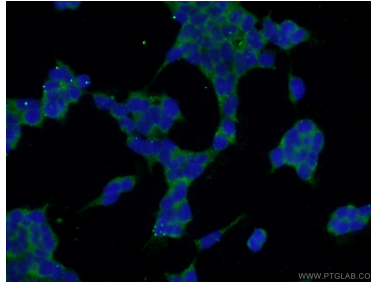
E: proteintech@ptglab.com
W: ptglab.com

This product is exclusively available under Proteintech Group brand and is not available to purchase from any other manufacturer.

Données de validation sélectionnées



HEK-293 cells were subjected to SDS PAGE followed by western blot with 21137-1-AP (SPACA3 antibody) at dilution of 1:300 incubated at room temperature for 1.5 hours.



Immunofluorescent analysis of HEK-293 cells using 21137-1-AP (SPACA3 antibody) at dilution of 1:50 and Alexa Fluor 488-conjugated AffiniPure Goat Anti-Rabbit IgG(H+L).