

À des fins de recherche uniquement

# Anticorps Polyclonal de lapin anti-SLITRK6



Numéro de catalogue: 21150-1-AP

## Informations de base

<b>Numéro de catalogue:</b> 21150-1-AP	<b>Numéro d'acquisition GenBank:</b> BC101070	<b>Méthode de purification:</b> Purification par affinité contre l'antigène
<b>Taille:</b> 150ul, Concentration: 400 µg/ml by Nanodrop and 347 µg/ml by Bradford method using BSA as the standard;	<b>Identification du gène (NCBI):</b> 84189	<b>Dilutions recommandées:</b> WB 1:500-1:2000 IF 1:10-1:100
<b>Hôte:</b> Lapin	<b>Nom complet:</b> SLIT and NTRK-like family, member 6	
<b>Isotype:</b> IgG	<b>MW calculé</b> 841 aa, 95 kDa	
<b>Immunogen Catalog Number:</b> AG15701	<b>MW observés:</b> 95-100 kDa	

## Applications

<b>Applications testées:</b> FC, IF, WB, ELISA	<b>Contrôles positifs:</b>
<b>Spécificité de l'espèce:</b> Humain, rat, souris	<b>WB:</b> cellules A549, tissu pulmonaire de souris <b>IF:</b> cellules HepG2,

## Informations générales

SLITRK6 is a member of the SLITRK family. Members of this family are integral membrane proteins that are characterized by two N-terminal leucine-rich repeat (LRR) domains and a C-terminal region that shares homology with trk neurotrophin receptors. This protein functions as a regulator of neurite outgrowth required for normal hearing and vision. Mutations in SLITRK6 gene are a cause of myopia and deafness.

## Stockage

**Stockage:**  
Stocker à -20°C. Stable pendant un an après l'expédition.  
**Tampon de stockage:**  
PBS avec azoture de sodium à 0,02 % et glycérol à 50 % pH 7,3  
L'aliquotage n'est pas nécessaire pour le stockage à -20C

\*\*\* Les 20ul contiennent 0,1% de BSA.

For technical support and original validation data for this product please contact:

T: 1 (888) 4PTGLAB (1-888-478-4522) (toll free in USA), or 1(312) 455-8498 (outside USA)

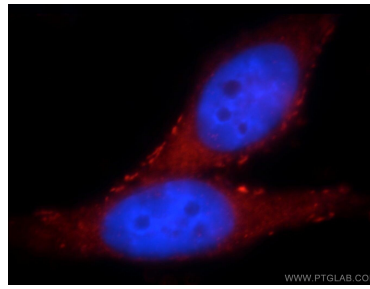
E: [proteintech@ptglab.com](mailto:proteintech@ptglab.com)  
W: [ptglab.com](http://ptglab.com)

This product is exclusively available under Proteintech Group brand and is not available to purchase from any other manufacturer.

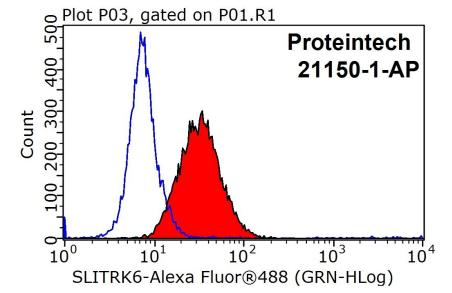
## Données de validation sélectionnées



A549 cells were subjected to SDS PAGE followed by western blot with 21150-1-AP (SLITRK6 antibody) at dilution of 1:500 incubated at room temperature for 1.5 hours.



Immunofluorescent analysis of HepG2 cells, using SLITRK6 antibody 21150-1-AP at 1:25 dilution and Rhodamine-labeled goat anti-rabbit IgG (red). Blue pseudocolor = DAPI (fluorescent DNA dye).



$1 \times 10^6$  HepG2 cells were stained with 0.2ug SLITRK6 antibody (21150-1-AP, red) and control antibody (blue). Fixed with 90% MeOH blocked with 3% BSA (30 min). Alexa Fluor 488-conjugated AffiniPure Goat Anti-Rabbit IgG(H+L) with dilution 1:1000.