

À des fins de recherche uniquement

Anticorps Polyclonal de lapin anti-KIR2DS4



Numéro de catalogue: 21152-1-AP

Informations de base

Numéro de catalogue:

21152-1-AP

Taille:

150ul, Concentration: 533 µg/ml by Bradford method using BSA as the standard;

Hôte:

Lapin

Isotype:

IgG

Immunogen Catalog Number:

AG15711

Numéro d'acquisition GenBank:

BC096694

Identification du gène (NCBI):

3809

Nom complet:

killer cell immunoglobulin-like receptor, two domains, short cytoplasmic tail, 4

MW calculé

304 aa, 34 kDa

MW observés:

33 kDa

Méthode de purification:

Purification par affinité contre l'antigène

Dilutions recommandées:

WB 1:1000-1:4000

IF 1:10-1:100

Applications

Applications testées:

IF, WB, ELISA

Spécificité de l'espèce:

Humain

Contrôles positifs:

WB : cellules HL-60, cellules Jurkat

IF : cellules HepG2,

Informations générales

KIR2DS4 (also known as CD158i) is a member of the killer cell immunoglobulin-like receptor (KIR) family. KIRs are transmembrane glycoproteins expressed by natural killer cells and subsets of T cells. KIRs are mainly involved in inhibiting NK killing (inhibitory KIRs) via interaction with MHC class I molecules. KIR2DS4 has been reported to be an activating KIR and recognize the HLA-Cw4 protein.

Stockage

Stockage:

Stocker à -20°C. Stable pendant un an après l'expédition.

Tampon de stockage:

PBS avec azoture de sodium à 0,02 % et glycérol à 50 % pH 7,3

L'aliquotage n'est pas nécessaire pour le stockage à -20°C

*** Les 20ul contiennent 0,1% de BSA.

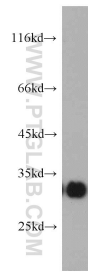
For technical support and original validation data for this product please contact:

T: 1 (888) 4PTGLAB (1-888-478-4522) (toll free in USA), or 1(312) 455-8498 (outside USA)

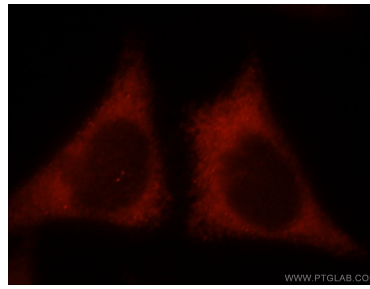
E: proteintech@ptglab.com
W: ptglab.com

This product is exclusively available under Proteintech Group brand and is not available to purchase from any other manufacturer.

Données de validation sélectionnées



HL-60 cells were subjected to SDS PAGE followed by western blot with 21152-1-AP (KIR2DS4 antibody) at dilution of 1:500 incubated at room temperature for 1.5 hours.



Immunofluorescent analysis of HepG2 cells, using KIR2DS4 antibody 21152-1-AP at 1:25 dilution and Rhodamine-labeled goat anti-rabbit IgG (red).