

À des fins de recherche uniquement

# Anticorps Polyclonal de lapin anti-S1PR2



Numéro de catalogue: 21180-1-AP

Phare

39 Publications

## Informations de base

Numéro de catalogue:

21180-1-AP

Taille:

150ul, Concentration: 450 µg/ml by Nanodrop and 333 µg/ml by Bradford method using BSA as the standard;

Hôte:

Lapin

Isotype:

IgG

Immunogen Catalog Number:

AG15470

Numéro d'acquisition GenBank:

BC069598

Identification du gène (NCBI):

9294

Nom complet:

sphingosine-1-phosphate receptor 2

MW calculé

353 aa, 39 kDa

MW observés:

40-50 kDa

Méthode de purification:

Purification par affinité contre l'antigène

Dilutions recommandées:

WB 1:500-1:1000

IF 1:200-1:800

## Applications

Applications testées:

IF, WB, ELISA

Demandes citées:

IF, IHC, IP, WB

Spécificité de l'espèce:

Humain, rat, souris

Espèces citées:

Humain, rat, souris

Contrôles positifs:

WB : cellules HeLa, cellules Daudi, cellules MCF-7

IF : tissu cérébral de souris,

## Informations générales

S1PR2 (sphingosine-1-phosphate receptor 2), also known as S1P2 or EDG5, is one of five G-protein-coupled receptors for sphingosine-1-phosphate (S1P), a biologically active metabolic product of sphingolipid (PMID: 18787560). S1P and its receptors have important regulatory functions in normal physiology and disease processes, particularly involving the immune, central nervous, and cardiovascular systems (PMID: 21339489). S1PR2 plays a role in acute vascular inflammation (PMID: 23723450). S1PR2 signaling is implicated in STAT3 activation (PMID: 22606352).

## Publications notables

Autrice	Pubmed ID	Journal	Application
Yonggui Song	33007392	J Ethnopharmacol	WB
Gennaro Bruno	31477835	Oncogene	WB
K Liu	31610097	Andrology	WB,IHC,IF

## Stockage

Stockage:

Stocker à -20°C. Stable pendant un an après l'expédition.

Tampon de stockage:

PBS avec azoture de sodium à 0,02 % et glycérol à 50 % pH 7,3

L'aliquotage n'est pas nécessaire pour le stockage à -20C

\*\*\* Les 20ul contiennent 0,1% de BSA.

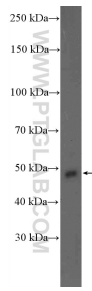
For technical support and original validation data for this product please contact:

T: 1 (888) 4PTGLAB (1-888-478-4522) (toll free in USA), or 1(312) 455-8498 (outside USA)

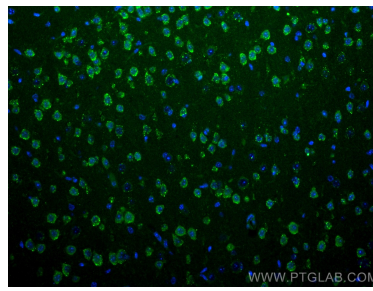
E: [proteintech@ptglab.com](mailto:proteintech@ptglab.com)  
W: [ptglab.com](http://ptglab.com)

This product is exclusively available under Proteintech Group brand and is not available to purchase from any other manufacturer.

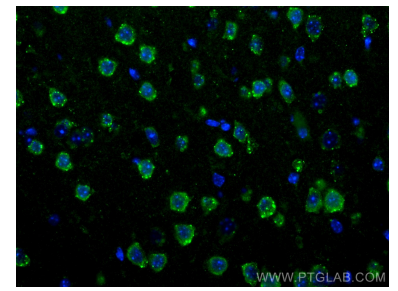
## Données de validation sélectionnées



HeLa cells were subjected to SDS PAGE followed by western blot with 21180-1-AP (S1PR2 Antibody) at dilution of 1:600 incubated at room temperature for 1.5 hours.



Immunofluorescent analysis of (4% PFA) fixed mouse brain tissue using S1PR2 antibody (21180-1-AP) at dilution of 1:400 and Coralite® 488-Conjugated AffiniPure Goat Anti-Rabbit IgG(H+L).



Immunofluorescent analysis of (4% PFA) fixed mouse brain tissue using S1PR2 antibody (21180-1-AP) at dilution of 1:400 and Coralite® 488-Conjugated AffiniPure Goat Anti-Rabbit IgG(H+L).