

À des fins de recherche uniquement

Anticorps Polyclonal de lapin anti-BCL6



Numéro de catalogue: 21187-1-AP

Phare

14 Publications

Informations de base

Numéro de catalogue:

21187-1-AP

Taille:

150ul, Concentration: 600 µg/ml by Nanodrop;

Hôte:

Lapin

Isotype:

IgG

Immunogen Catalog Number:

AG15519

Numéro d'acquisition GenBank:

BC150184

Identification du gène (NCBI):

604

Nom complet:

B-cell CLL/lymphoma 6

MW calculé

706 aa, 79 kDa

MW observés:

79-95 kDa

Méthode de purification:

Purification par affinité contre l'antigène

Dilutions recommandées:

WB 1:500-1:3000

IP 0.5-4.0 ug for IP and 1:500-1:2000 for WB

IHC 1:200-1:800

Applications

Applications testées:

FC, IHC, IP, WB, ELISA

Demandes citées:

IHC, WB

Spécificité de l'espèce:

Humain

Espèces citées:

Humain, souris

Contrôles positifs:

WB : cellules Raji,

IP : cellules Raji,

IHC : tissu d'amygdalite humain, tissu de lymphome humain

Remarque-IHC: il est suggéré de démasquer l'antigène avec un tampon de TE buffer pH 9,0; (*) À défaut, le démasquage de l'antigène peut être effectué avec un tampon citrate pH 6,0.

Informations générales

BCL6, a zinc finger transcription factor, contains a N-terminal BTB/POZ domain and C-terminal zinc finger DNA-binding motifs and represses transcription of a wide range of target proteins and microRNAs. BCL6 protein has been reported as a master regulator of B lymphocyte development and growth, and altered BCL6 protein expression was implicated in pathogenesis of diverse human hematologic malignancies, especially in the diffuse large B cell lymphoma (DLBCL). BCL6 is required for the development of T follicular helper T cells (TFH), a helper T cell subset required for the formation of mature and productive GCs. BCL6 has also been shown to play important regulatory roles in macrophages.

Publications notables

Autrice	Pubmed ID	Journal	Application
Ranran Sun	33008587	Biochem Biophys Res Commun	WB
Shuang Zhang	34558634	Mol Med Rep	WB
Lai Chen	33191180	Int Immunopharmacol	WB

Stockage

Stockage:

Stocker à -20°C. Stable pendant un an après l'expédition.

Tampon de stockage:

PBS avec azoture de sodium à 0,02 % et glycérol à 50 % pH 7,3

L'aliquotage n'est pas nécessaire pour le stockage à -20C

*** Les 20ul contiennent 0,1% de BSA.

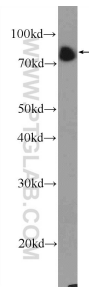
For technical support and original validation data for this product please contact:

T: 1 (888) 4PTGLAB (1-888-478-4522) (toll free in USA), or 1(312) 455-8498 (outside USA)

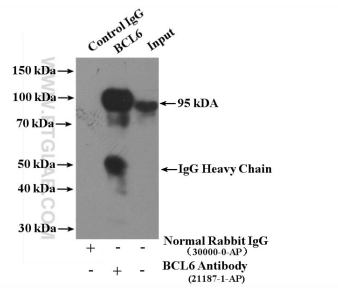
E: proteintech@ptglab.com
W: ptglab.com

This product is exclusively available under Proteintech Group brand and is not available to purchase from any other manufacturer.

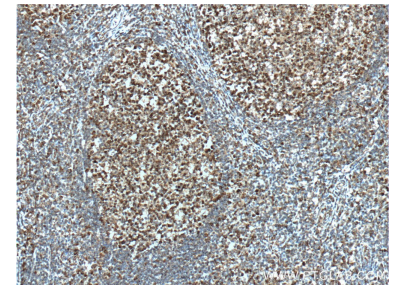
Données de validation sélectionnées



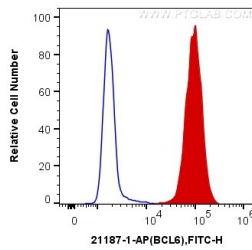
Raji cells were subjected to SDS PAGE followed by western blot with 21187-1-AP (BCL6 Antibody) at dilution of 1:1500 incubated at room temperature for 1.5 hours.



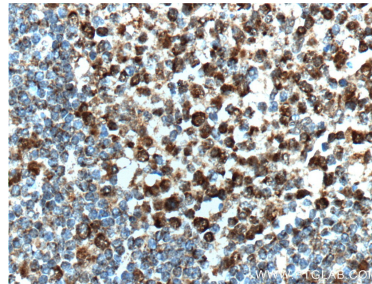
IP Result of anti-BCL6 (IP:21187-1-AP, 4ug; Detection:21187-1-AP 1:1000) with Raji cells lysate 1400ug.



Immunohistochemical analysis of paraffin-embedded human tonsillitis tissue slide using 21187-1-AP (BCL6 Antibody) at dilution of 1:400 (under 10x lens). Heat mediated antigen retrieved with Sodium Citrate buffer (pH 6.0).



1X10⁶ Ramos cells were intracellularly stained with 0.2 ug Anti-Human BCL6 (21187-1-AP) and CoraLite@488-Conjugated AffiniPure Goat Anti-Rabbit IgG(H+L) at dilution 1:1000 (red), or 0.2 ug Control Antibody. Cells were fixed and permeabilized with Transcription Factor Staining Buffer Kit (PF00011).



Immunohistochemical analysis of paraffin-embedded human tonsillitis tissue slide using 21187-1-AP (BCL6 Antibody) at dilution of 1:400 (under 40x lens). Heat mediated antigen retrieved with Sodium Citrate buffer (pH 6.0).