

À des fins de recherche uniquement

Anticorps Polyclonal de lapin anti-NUDCD2



Numéro de catalogue: 21205-1-AP

Informations de base

Numéro de catalogue:
21205-1-AP

Taille:
150ul, Concentration: 450 µg/ml by Nanodrop and 267 µg/ml by Bradford method using BSA as the standard;

Hôte:
Lapin

Isotype:
IgG

Immunogen Catalog Number:
AG15579

Numéro d'acquisition GenBank:
BC017934

Identification du gène (NCBI):
134492

Nom complet:
NudC domain containing 2

MW calculé:
157 aa, 18 kDa

MW observés:
18 kDa

Méthode de purification:
Purification par affinité contre l'antigène

Dilutions recommandées:
WB 1:500-1:3000
IP 0.5-4.0 ug for IP and 1:500-1:1000 for WB
IHC 1:200-1:800
IF 1:200-1:800

Applications

Applications testées:
IF, IHC, IP, WB, ELISA

Spécificité de l'espèce:
Humain, rat, souris

Remarque-IHC: il est suggéré de démasquer l'antigène avec un tampon de TE buffer pH 9.0; (*) À défaut, le démasquage de l'antigène peut être effectué avec un tampon citrate pH 6.0.

Contrôles positifs:

WB : tissu cérébral humain, cellules HEK-293, cellules HepG2, tissu rénal humain

IP : cellules HepG2,

IHC : tissu rénal humain, tissu de cancer du sein humain

IF : cellules HepG2, cellules HeLa

Informations générales

NUDCD2, also known as NudCL2, is an HSP90 cochaperone that regulates sister chromatid cohesion during mitosis. NUDCD2 also plays a role in ciliogenesis (PMID: 30368549, 34480124). NUDCD2 regulates the LIS1/dynein pathway by stabilizing LIS1 with Hsp90 chaperone (PMID: 20133715).

Stockage

Stockage:

Stocker à -20°C. Stable pendant un an après l'expédition.

Tampon de stockage:

PBS avec azoture de sodium à 0,02 % et glycérol à 50 % pH 7,3

L'aliquotage n'est pas nécessaire pour le stockage à -20C

*** Les 20ul contiennent 0,1% de BSA.

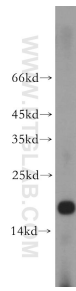
For technical support and original validation data for this product please contact:

T: 1 (888) 4PTGLAB (1-888-478-4522) (toll free in USA), or 1(312) 455-8498 (outside USA)

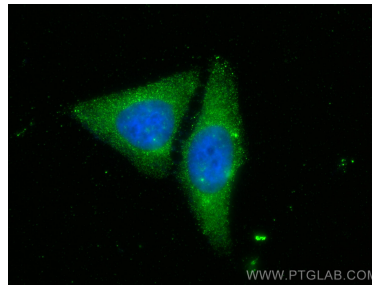
E: proteintech@ptglab.com
W: ptglab.com

This product is exclusively available under Proteintech Group brand and is not available to purchase from any other manufacturer.

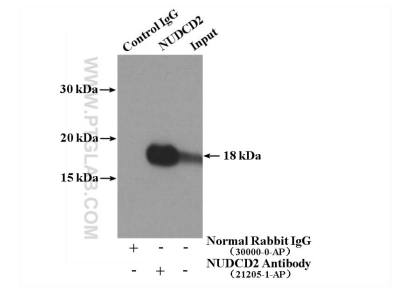
Données de validation sélectionnées



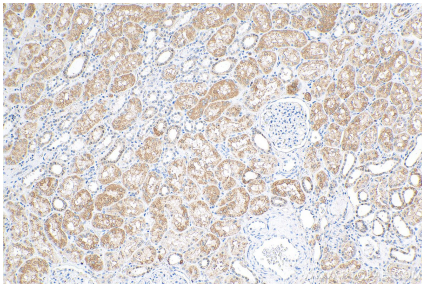
human brain tissue were subjected to SDS PAGE followed by western blot with 21205-1-AP (NUDCD2 antibody) at dilution of 1:500 incubated at room temperature for 1.5 hours.



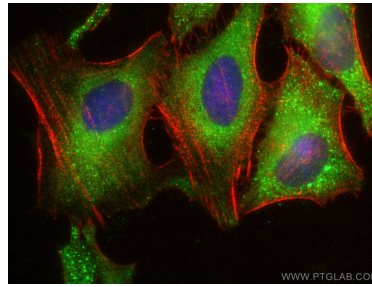
Immunofluorescent analysis of (-20°C Ethanol) fixed HepG2 cells using NUDCD2 antibody (21205-1-AP) at dilution of 1:400 and CoraLite®488-Conjugated AffiniPure Goat Anti-Rabbit IgG(H+L).



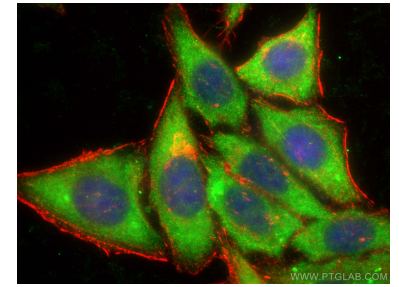
IP Result of anti-NUDCD2 (IP:21205-1-AP, 4ug; Detection:21205-1-AP 1:600) with HepG2 cells lysate 3480ug.



Immunohistochemical analysis of paraffin-embedded human kidney tissue slide using 21205-1-AP (NUDCD2 antibody) at dilution of 1:400 (under 10x lens). Heat mediated antigen retrieval with Tris-EDTA buffer (pH 9.0).



Immunofluorescent analysis of (-20°C Ethanol) fixed HeLa cells using NUDCD2 antibody (21205-1-AP) at dilution of 1:400 and CoraLite®488-Conjugated AffiniPure Goat Anti-Rabbit IgG(H+L), CL594-phalloidin (red).



Immunofluorescent analysis of (-20°C Ethanol) fixed HepG2 cells using NUDCD2 antibody (21205-1-AP) at dilution of 1:400 and CoraLite®488-Conjugated AffiniPure Goat Anti-Rabbit IgG(H+L), CL594-phalloidin (red).